



CANTIERE
DELLE MARCHE
explorer's attitude

Darwin 86



YACHT INTRODUCTION

M/Y Empire

Empire, designed with Hydro Tec's signature Darwin aesthetics and CdM's unique technical approach, is a testament to superior construction and design. The yacht's project has been developed for long voyages also in high-latitude regions, so it includes an 'ice belt' at the waterline and reinforced hull and rudders for icy conditions. According to Owner's requests, the hull has been partially built with bulletproof steel plates, reflecting his intention to navigate remote and challenging seas. Another unique feature is a fourth pilot station in the engine room.

The interiors, designed by Alessandro Massari to the owner's specifications for guest accommodations and style, radiates a sober, understated elegance. The designer created a warm, inviting ambiance by blending custom-made furniture with pieces from renowned brands like Poltrona Frau and Poliform. The Owner's full beam stateroom is situated amidships on the Lower deck, providing ample space and comfort. Adjacent to this luxurious stateroom are two twin cabins, each equipped with a pullman bed to accommodate additional guests. At the forward end of the Lower deck, a VIP suite offers a private and elegant retreat.

The crew quarters, designed to house four members, are located forward on the Main deck. This area includes a substantial crew mess for communal dining and relaxation. The quarters are strategically connected to the wheelhouse on the Upper deck via a dedicated staircase, ensuring efficient communication and movement for the crew. Empire's Main deck is the epicenter of social activity, featuring both indoor and outdoor spaces for lounging and dining. A cozy bar enhances the social atmosphere, while the galley is conveniently equipped for meal preparation and service.

The Upper deck is home to a spacious and well-equipped gym, catering to fitness enthusiasts, but it is also a cozy lounging area opening onto a properly furnished stern terrace. The wheelhouse, designed with Boeving integrated monitoring and control systems, ensures ease of handling for the captain and crew. The Sun deck, furnished with loose furniture and sunbeds, offers an ideal setting for open-air relaxation and enjoyment.

Measuring 26.30 meters, Empire is a compact and robust vessel, characterized by comfort and reliability. She is powered by twin Scania engines, each delivering 294 kW, and is equipped with three Northern Light Generators, providing a total of 155 kW of power. The yacht also features sodium-lithium chloride batteries for enhanced energy efficiency and is protected by a sophisticated anti-intrusion system.



Scan the QR Code to
enjoy EMPIRE's video

YACHT STATUS & MAJOR UPGRADES

Price

USD 11.400.000

VAT

VAT not paid

USA Import Duty Not Paid.

Vessel is not for sale to USA residents while IN USA Waters unless located in an FTZ.

Year

2024

Engine hours

Port 739 hr,
starboard 693 hr

Diesel generator hours

Port 907 hr, starboard 907 hr,
auxiliary generator 400 hr

Classification

RINA pleasure unrestricted navigation in compliance with EC Directive 2013/53/UE

Vessel can be registered under 24m Lh (iso 8666)
Hull Length

Location

Fort Lauderdale, Florida

Upgrades

- Performance & Autonomy
 - 180 kWh battery pack enables overnight and anchor stay without generator
 - Auxiliary generator for enhanced power.
60 Hz Electrical System and frequency convert for worldwide power compatibility.
 - Bow & Stern Thrusters + STAR Stabilizers (ABT-TRAC) for superior manoeuvrability and comfort
 - SeaTorque shaft system for smoother and more efficient propulsion
- Exterior Design & Structural Modifications
 - Ice belt: reinforced hull protection for cold regions.
 - Carbon fibre hard top: lightweight and functional to shade the sun deck.
 - Open stern layout for easy access to swim platform.
 - 20 lights recessed in the rub rail.
 - RGBW underwater lights at stern.
 - Stainless Steel Anchors.
- Safety & Technical Enhancements
 - Citadel in Engine Room, enclosed with armoured steel.
 - Fourth pilot station in the engine room.
 - Independent radio station in the engine room.
 - GOST exterior sirens against pirates' attack.
 - Floor sensors in front of access doors to the vessel.
 - Enhanced bilge system sensors and alarms.
 - Automated bilge pumps.
 - Cathelco Anti-Fouling System.
 - High-performance air flow system for the engine room ventilation.
 - Satellite phone.
 - Control of windlasses on the wing stations.
 - FARSounder ARGO 350 on the bulbous bow.
 - WASSP Multibeam Sonar on the tender and receiver on Empire.
 - Böning-Furuno integrated bridge
- Interiors
 - Crew area are built with the same standard as guest

PHOTO GALLERY













TECHNICAL SPECIFICATION

Model

Darwin Class 86

Hull Type

Full displacement

Hull Material

AH36 Steel

Superstructure Material

Marine Grade Aluminium

DIMENSIONS

LOA

26,10 m / 85,62 ft

Load Line Length

23,93 m / 78,51 ft

Beam

7,43 m / 24,37 ft

Full load

2,48 m / 8,1 ft

Displacement at full load

220 t

Gross Tonnage

199 GT

PERFORMANCES (sea trial)

MAIN ENGINES RPM	SPEED [KN]	TOTAL CONSUMPTION [L/H], INCLUDING ONE DIESEL GENERATOR	TOTAL CONSUMPTION [US GALL/H], INCLUDING ONE DIESEL GENERATOR	RANGE [NM]
700	5,4	21,0	5,5	17.722
800	6,1	24,0	6,3	15.729
900	6,9	28,0	7,4	13.838
1.000	7,2	33,0	8,7	11.301
1.100	7,7	40,0	10,6	9.266
1.200	8,3	48,0	12,7	7.885
1.300	8,7	56,0	14,8	6.828
1.400	9,2	69,0	18,2	5.629
1.500	9,8	87,0	23,0	4.595
1.600	10,3	102,0	26,9	4.042
1.700	10,9	123,0	32,5	3.482
1.800	11,6	146,0	38,6	2.868

ACCOMMODATION

Guest Cabins

Owner cabin, 2 guest cabins and a VIP cabin on lower deck

Total berths: 10

Crew

2 crew cabins on main deck forward

CAPACITIES

Fuel

38.000 l / 1.038 US gal

Fresh water

3.300 l / 872 US gal

Black water

980 l / 259 US gal

Grey water

6.300 l / 1.664 US gal

Dirty oil

400 l / 106 US gal

Lubrication oil

oil 400 l / 106 US gal

Bilge

980 l / 259 US gal

MECHANICAL EQUIPMENT

Engines

2 x SCANIA 13080M 03-61D 294Kw (400 cv) @ 1.800 RPM IMO TIER II EPA TIER III

Gearboxes

TWIN DISK model MGX5114DC

Water Maker

FCl watermaker Model Aquamiser Framed 800GPD

Stabilizers

ABT-TRAC 220 Digital Fins – active at anchor and underway

Bow Thruster

Electric, 52 kW – proportional control (ABT-TRAC)

Steering System

Electro-hydraulic power-assisted with dual rams and emergency manual pump

ELECTRICAL SYSTEM

Generators

2 x Northern Light 65 kW
1 x Northern Light 25 kW

Frequency converter

ASEA AC75

DECK EQUIPMENT

Docking Capstans

ITALWINCH Mod. Milos

Windlasses

ITALWINCH NV-16

Anchors

2 x High holding power anchors 180 kg, finish in stainless steel

Anchor Chains

2 x 110 m (360 ft) of 14 mm (0,55 in) diameter

Gangway

Opac Mare model 1133/42

Crane

Steelhead Marine CT 3500
SWL 1600 Kg (3500 lbs)

HOUSEHOLD APPLIANCES

Main Deck – Crew Mess

Washing machine – GE Appliances
GFW148SSMWW
Tumble dryer – GE Appliances
GFT14ESSMWW
Ice maker with pump – Subzero UC-15 IP
(built-in)
Ice maker door + pro handle – Subzero
7030431 (15" front door panel)
Closing lock – Subzero
Speed regulator – Sentera USX-7-15-DT
(1.5 Ampere)
Electric fan – Soler & Palau TD-100
Freezer with ice maker – Subzero
DEC3650 FI/LH (built-in)
Freezer door + pro handle – Subzero
7025319 (IC-36 FP)
Closing lock – Subzero

Main Deck – Galley

Induction hob + oven – Wolf IR 30450/S/T
Speed regulator – Sentera USX-7-15-DT
Electric fan – Soler & Palau TD-100
Dishwasher – Subzero DW2450
(undercounter)
Stainless steel panel for dishwasher –
Subzero 9019420
Pro handle – Subzero 827304
Dishwasher pro handle – Subzero 827304
Fridge + freezer – Subzero DET3050CI/R
(built-in)
Stainless steel panels (handle included) –
Subzero 7025308
Closing lock – Subzero
Pro handle – Subzero 7026117
Pro handle – Subzero 7026117

Pro handle – Subzero 7026116
In-sink-erator – Emerson Evolution
Compact 3/4 HP
In-sink-erator dual outlet sink top switch –
Emerson ST S00
Trash compactor – Krushr K012
Trash compactor stainless steel door –
Krushr K012 door
Trash compactor bags – Krushr N01 (12
bags)
Microwave hood – Café CVM517P2MS1

Main Deck – Main Salon

Undercounter wine cellar – Subzero
DEU2450BG/LH (built-in)
Stainless steel glass door (handle included)
– Subzero 9028514
Closing lock – Subzero
Pro handle – Subzero 9036003
Tubular or pro handle – Subzero 7025231
(540mm)
Speed regulator – Sentera USX-7-15-DT

NAVIGATION SYSTEMS

Radar

1 × Furuno X-Band Radar, Model FAR-
2228BB, open array antenna (6 ft, 12kW),
72 nm range
(Complies with IMO standards)

Multifunction Displays

2 × Furuno MU-152 touch screen 15"
displays (MFDs)

GPS Receiver

1 × Furuno GP-170 GPS

Chart Plotter

Integrated through MFD with NavNet
TZtouch2 software suite and C-MAP/
Jeppesen charts

Autopilot

1 × Furuno NAVpilot-300 with integrated
heading sensor PG-700

Magnetic Compass

1 × Cassens & Plath Type 11

Gyrocompass (Optional)

Option for Anschütz Standard 30MF (if
requested)

Echo Sounder

1 × Furuno FE-800 dual frequency
(50/200 kHz) with depth alarm

Speed/Log/Wind Sensors

1 × AIRMAR triducer (speed, depth,
temperature)

AIS

1 × Furuno FA-170 Class A AIS

NAVTEX Receiver

1 × Furuno NX-700

COMMUNICATION SYSTEMS

VHF Radio (Main)

1 × Furuno FM-4800 VHF with DSC + external speaker

VHF Radio (GMDSS)

1 × Furuno FM-8900S with DSC (compliant with A1+A2+A3 zones)

MF/HF Transceiver

1 × Furuno FS-1575 150W with DSC and antenna tuner (GMDSS compliant)

Inmarsat-C Terminal

1 × Furuno Felcom 18 with printer

Satellite Communication

1 × SAILOR FleetBroadband 250 for voice and data (internet/email)

EPIRB

1 × Jotron Tron 60 GPS, float-free and automatically activated

SART

1 × Jotron SART20 Search and Rescue Radar Transponder

Wi-Fi & Network

Full yacht coverage with high-speed Wi-Fi system, router and access points integrated into entertainment and operations systems

Intercom & Alarm System

Localized fixed station internal communication between bridge, engine room, and crew mess Integrated into monitoring & alarm systems

ENTERTAINMENT SYSTEM

Interior Zones**Salon:**

Samsung 65" Q6 Series 4K UHD Smart TV

Denon AVR-X2700H amplifier (Dolby Atmos, Bluetooth, AirPlay2)

JL Audio subwoofer

4 × B&W CCM664 ceiling speakers

Motorized TV lift system (Future Automation LSM-EFA7)

Owner's Cabin:

Samsung 65" UHD Frame TV
B&W integrated speaker system

VIP Cabin:

Samsung 55" 4K Q6 Series TV
B&W ceiling speakers

Guest Cabins (Port & Starboard):

Samsung 32" Full HD Smart TVs

Gym / Lounge:

Samsung 55" 4K Smart TV
Denon AVR-X2700H amplifier
B&W CCM664 ceiling speakers
JL Audio subwoofer
Electric flap lift system (Future Automation LSM-EFA6)

Crew Mess:

Samsung 32" Full HD Smart TV

External Zones**Main Deck, Upper Deck, and Sun Deck:**

JL Audio 6.5" coaxial marine speakers (multiple zones)

JL Audio subwoofers on main and sun deck

SONOS Port audio players

Independent volume and source control per area

Central Control & Networking

Bose ControlSpace ESP-880A audio processor

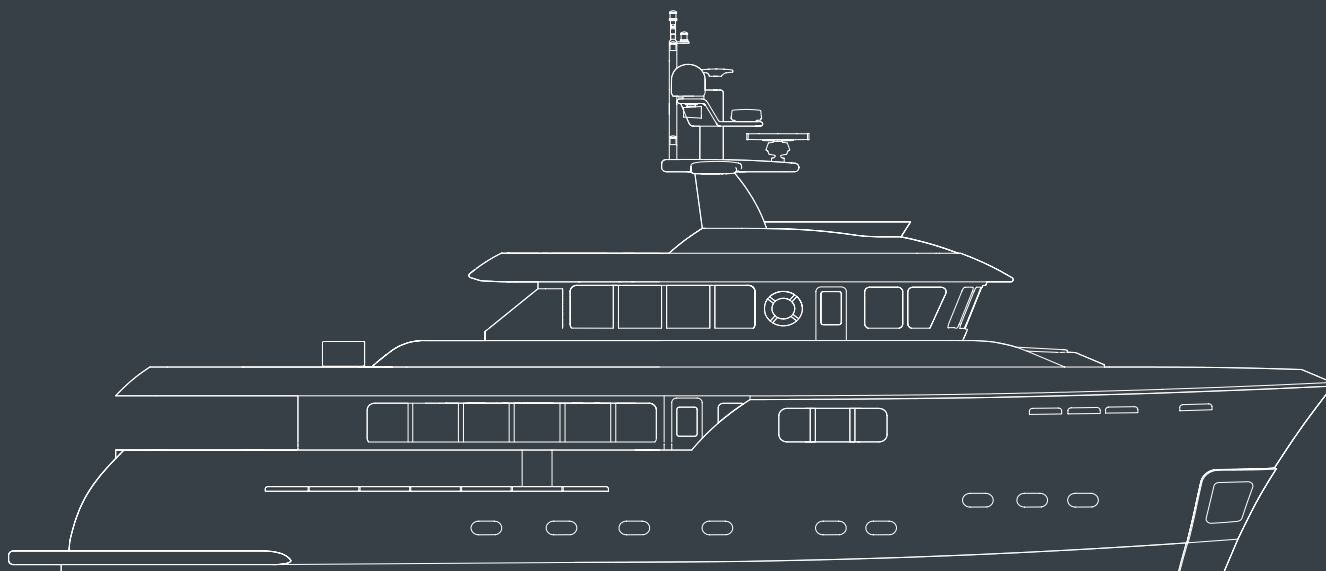
Bose PM8250N amplifier (8x250W DSP)

ICX7150-48P POE+ network switch

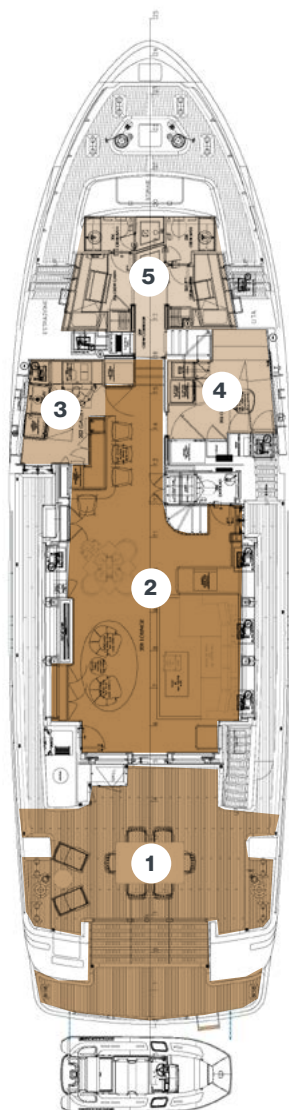
Centralized rack system with UPS backup

Custom Pro24+ remote controls with RF + IR support in all main zones

GENERAL ARRANGEMENT



MAIN DECK



1.OUTDOOR AREA

33.5 sqm / 360.5 ft²

2.MAIN SALON

33.9 sqm / 364.9 ft²

3.GALLEY

5.2 sqm / 56.0 ft²

4.CREW MESS

6.6 sqm / 71.0 ft²

5.CREW QUARTERS

9.6 sqm / 103.3 ft²

LOWER DECK



1.VIP CABIN

17.7 sqm / 190.5 ft²

2.OWNER CABIN

23.9 sqm / 257.3 ft²

3.TWIN CABIN SX

10.2 sqm / 109.8 ft²

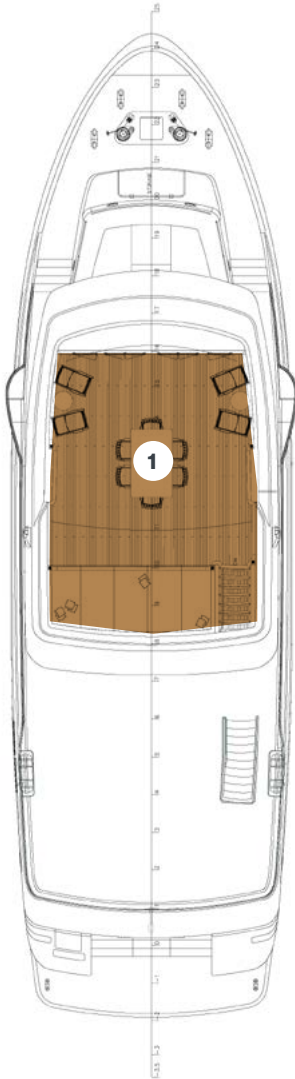
4.TWIN CABIN DX

9.8 sqm / 105.5 ft²

5.LAZARETTE

8.6 sqm / 92.5 ft²

SUN DECK



1. SUN DECK
40.2 sqm / 432.7 ft²

UPPER DECK



1. SKY LOUNGE
14,6 sqm / 157,1 ft²

2. WHEELHOUSE
8,2 sqm / 88,2 ft²

3. SUN BED
5,7 sqm / 61,3 ft²

4. OUTDOOR AREA
46,8 sqm / 503,9 ft²

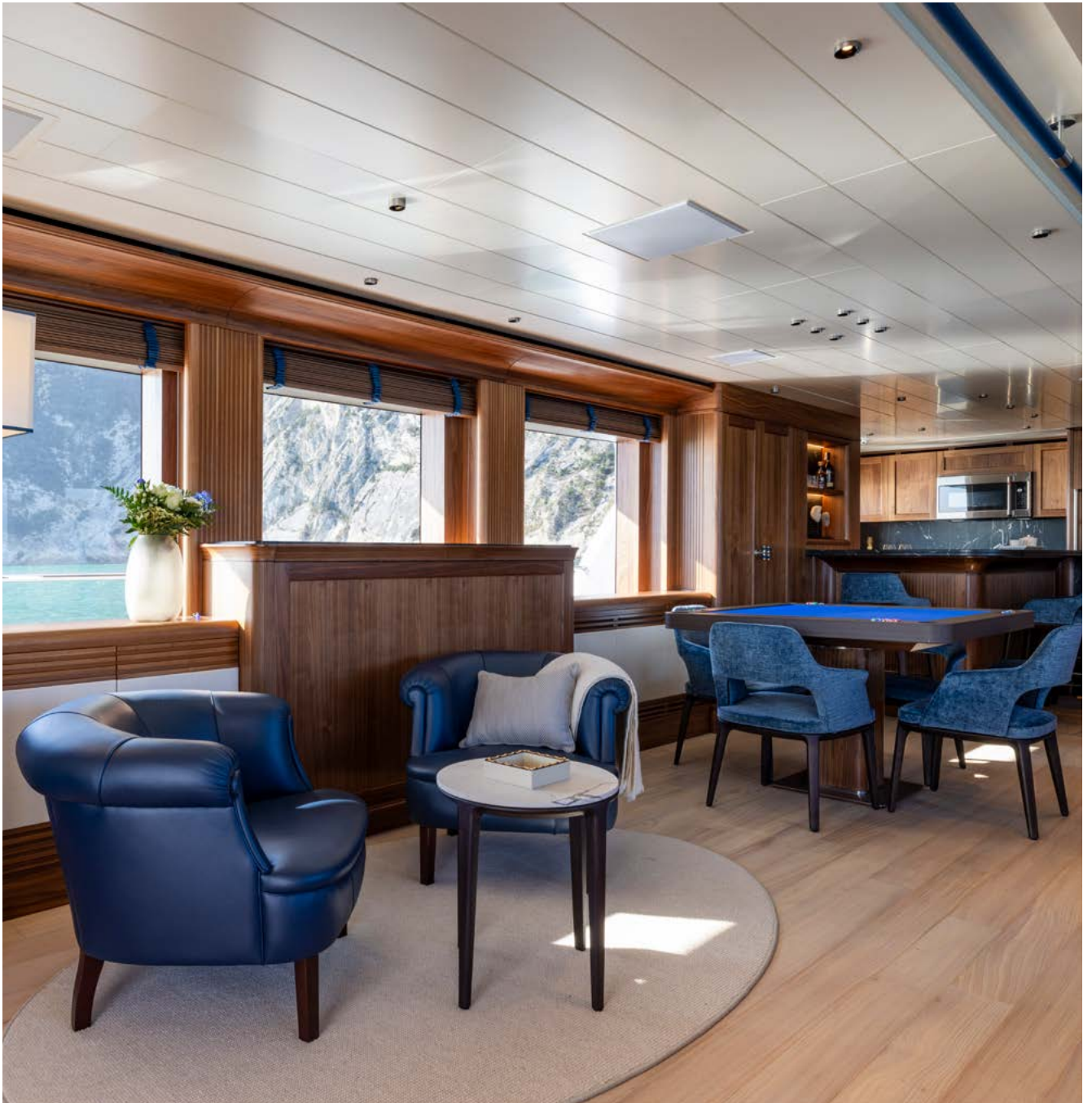
PHOTO GALLERY

INTERIORS AND EXTERIORS



MAIN SALON





MAIN SALON





OWNER CABIN



OWNER CABIN





OWNER BATHROOM



VIP CABIN





VIP CABIN BATHROOM



GUEST CABIN

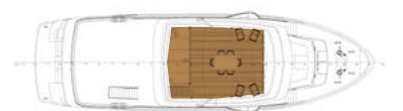




SUN DECK

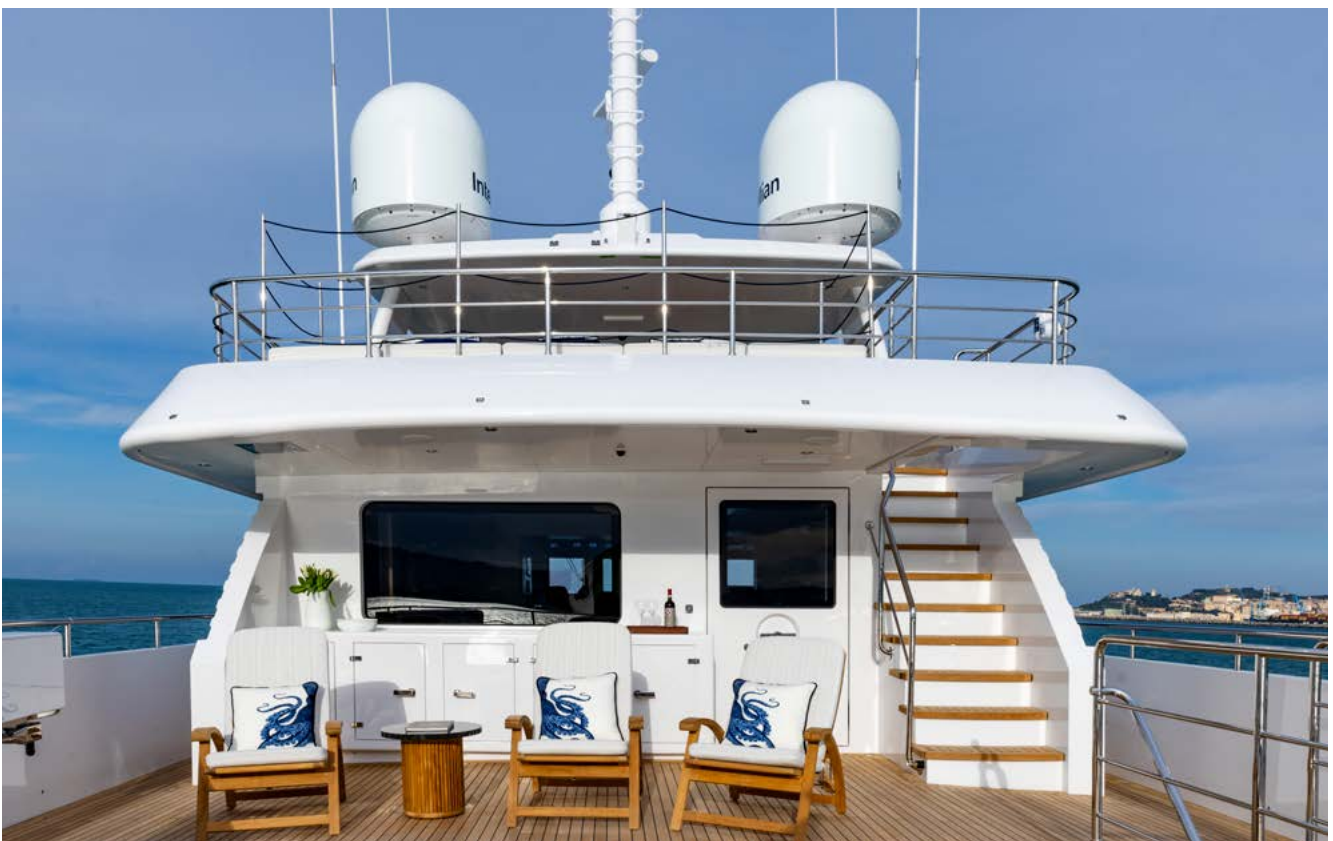


SUN DECK





UPPER DECK GYM



UPPER DECK COCKPIT





MAIN DECK COCKPIT



MAIN DECK COCKPIT

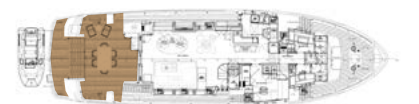


PHOTO GALLERY TECHNICAL



ENGINE ROOM



WHEELHOUSE





CANTIERE
DELLE MARCHE
explorer's attitude

www.cantieredellemarche.it