



CANTIERE
DELLE MARCHE

explorer yachting starts here

10
ANNI
VER
SARY

CANTIERE DELLE MARCHE

PRE-OWNED SALES DEPARTMENT



DARWIN 102 - BABBO



CANTIERE
DELLE MARCHE

explorer yachting starts here

10
ANNI
VER
SARY

M/Y BABBO

Commercial success at CdM re-owned Sales Department: Darwin 102 Babbo sold to an experienced Australian Owner

*“CdM pre-owned Sales Department’s market intelligence paired with our clients’ database always guarantees the smoothest of sales. This was also the case of the **Darwin 102 Babbo** which we were entrusted to sell less than a year ago,” says **Vasco Buonpensiere**, co-founder and Sales & Marketing Director of CdM. “We are extremely proud of this sale also because it shows that both strategies and procedures that we put in place during the lockdown due to the pandemic have worked as planned. More negotiations for both new and second-hand yachts are at the final straights.”*

Carlo Aquilanti, in charge of the Pre-owned Sales Department proudly declares: *“These last 6 months have been the more challenging, complex and successful of my 5 years at the yard. What the sales office has achieved in these difficult times, reorganizing itself, changing communication models, and creating new tools to counteract all hindrances caused by the pandemic, is just incredible. What we are witnessing is probably a record year for CdM and I’m proud of being a part of it”.*

Babbo has been acquired by an enthusiast new Owner who is ready to make the most out of her many strengths among which long range and reliability surely represent key points. The yacht will indeed sail soon far and wide to reach her new home port in Australia, eventually. *Babbo* has been kept in shipshape conditions by her previous Owner and is therefore ready to face a long journey across the oceans. The new Owner of *Babbo* is **the third Australian client for CdM** which – at just ten years from its foundation - succeeded in becoming one of the most reliable and best reputed shipyard in the world.

M/Y Babbo, Darwin 102, was launched in 2016. She belongs to the successful Darwin Class series designed by **Sergio Cutolo/Hydro Tec**, and features sophisticated contemporary interiors by famous **Mexican interior designer Simon Hamui**. Built in steel and aluminium, with a total length of **31 metres** and a beam of **7.43**

metres, *Babbo* has a displacement of 240 t and a Gross Tonnage of 246GT. Powered with twin **Caterpillar 500kW each**, *Babbo* has a range of above **4500 nautical miles** at a cruising speed of 10 knots. It is worth remember that *Babbo* features all technical standards that have made **CdM leader in the explorer vessels** sector: redundant equipment to grant total reliability and safety even in the most remote areas of the planet, 12mm steel hull, cupronickel piping, independent rudders, automatic generator parallel, electric fins stabilizers, as well as wastewater treatment systems for black, gray, and bilge waters that have been adapted from the world of work ships and designed to be used 24/365.

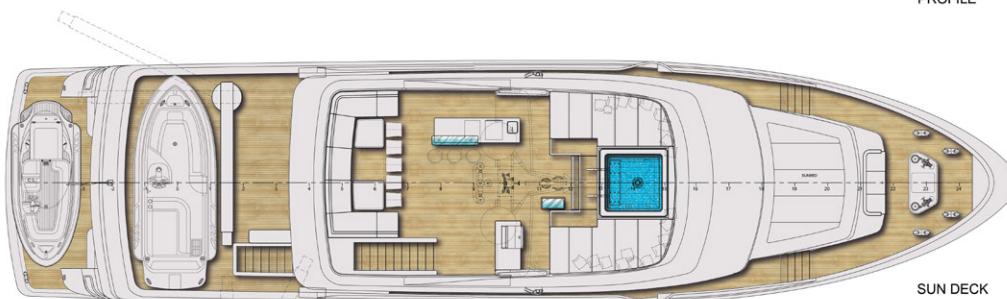
She can host up to **12 guests in 5 large suites** and **7 crew members in 4 cabins**. **All guest cabins are located on the Lower deck** with a large Owner stateroom forward, two twins with extra pullman beds amidship and two Vip cabins aft. **Crew quarters are on the Main deck forward** the galley located to port and a spacious dinette to starboard side which encompasses also a laundry area, extra fridges and freezers. Both galley and dinette open directly onto the side decks for a better crew circulation and guests’ privacy.

Social spaces are spread on the Main and Upper deck with a large and airy **salon on the Main deck** with lounging and dining areas and a cozy and welcoming **sky lounge on the Upper deck**. Wheelhouse and adjoining Captain’s cabin are on the Upper deck forward.

Outdoor areas are as generous as the indoor ones with fully equipped and large terraces on all decks plus a sunny and spacious Sun deck. On the Upper deck, a 6 m tender is stored during long passages. When towed, its place is taken by sunbeds and free-standing furniture, complementing the design of the cockpit which features a round teak table for 12 people. A further outdoor space with a sunbed area is located on the foredeck. As all Darwins, *Babbo* offers plenty of space for diving equipment and water toys alongside extremely generous storages.



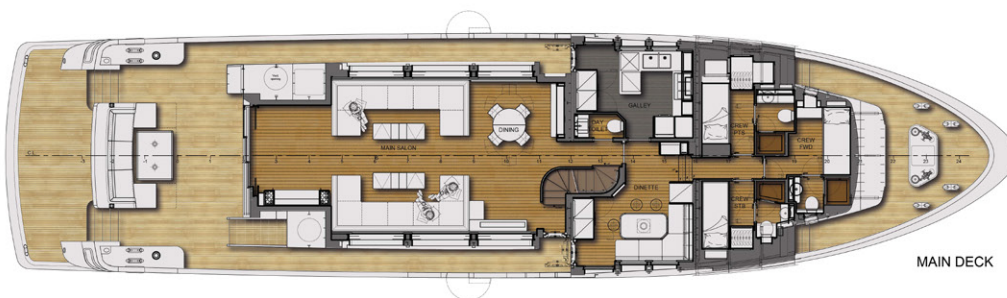
PROFILE



SUN DECK



UPPER DECK



MAIN DECK



LOWER DECK



Main Data

LOA	31.00m
LWL	28.00m
Beam	7.43m
Draft *	2.45m
Displacement *	240t approx.
Main engines	Caterpillar C18 ACERT 2x 500kW (680 CV) @ RPM
Maximum speed	13 knots
Range at 10 knots	4,500nm
Fuel capacity	40,000 litres
Fresh water capacity	6,000 litres
Black/grey/ bilge water	1,100 litres

*** At full load**