



CANTIERE
DELLE MARCHE
explorer yachting starts here

10
ANNI
VER-
SARY
2010
2020

DARWIN 115





CANTIERE
DELLE MARCHE
explorer yachting starts here



THE LARGEST DARWIN TO DATE HAS BEEN SUCCESSFULLY LAUNCHED ON JULY 29TH

"We are very glad that this experienced Owner decided to entrust us to build his Darwin and proud for the confidence he has placed in our team," says Vasco Buonpensiere, co-founder and sales and Marketing Director at CdM. *"We did our best to fulfill his expectations!"* Purchased by a **very experienced and passionate Owner**, the Darwin 115 started as a 112-footer and grew of around 3 feet as her Owner decided to have a longer and enclosed swim platform to enjoy a close relationship with the sea. With his new yacht the Owner plans long distance cruising to reach remote areas of the globe in full safety and relaxation with family and friends. **He has decided to purchase a Darwin Class yacht designed according to his requests as he appreciated the series' extraordinary reliability, safety, habitability and rational layout.** Among other qualities, the Owner appreciates the Darwin's high bow that intercepts rough seas and sea- kindly hull granting full comfort and a feeling of protection to guests. **The Darwin 115 is designed to sail thousands of miles a year** and quality of construction,

materials and technical equipment are critical to simplify the yacht's daily handling and upkeep. The engine room is always of key importance to CdM. Using proven high wear equipment in a large and well laid out engine room allows for ease of service by crew and the Darwin 115 is no exception.

The Darwin 115 is a genuine beauty of construction and design boasting the unmistakable Darwin aesthetics while leveraging on CdM's unique DNA. The project, customized according to his owner precise requests, features **Nauta Design's interiors**. This is the first time that Nauta designers, Mario Pedol and Massimo Gino, sign the interior of a Darwin Class. The interior decoration features an understated yet sophisticated style with plenty of bleached and brushed oak.

Exterior design and naval architecture bring the signature of **Sergio Cutolo/Hydro Tec**. The owner and his team worked with the designers and the shipyard engineers to tailor the Darwin 115 to their taste and lifestyle, creating a yacht that will take them around the world in comfort and safety.



**CANTIERE
DELLE MARCHE**

explorer yachting starts here



Main Features

Lower deck:

- Large swim platform surrounded by a high bulwark that partially folds down astern. It is a true terrace at sea level;
- The Owner is a keen diver so the yacht has full scuba-diving equipment;
- The lazarette is equipped with a professional ice-maker and ice box up to 200 litres and with large cabinets to store all sort of equipment.

Main deck:

- Full height windows in both Owner suite and galley;
- Extra layers of insulating materials in the Owner suite to further dampen the level of noise and vibrations.

Upper deck:

- The Upper deck has been lengthened and strengthened astern to carry a 3t crane and two large tenders;
- Large gym with Technogym and Home Fitness equipment.

Sun deck:

- 100 square metres of surface equipped with sun beds, table for 12, bar and BBQ;
- Hard top: 2 satellite antennas KVH series 11.

Decoration:

- Bleached and brushed oak;
- Perennials fabrics.

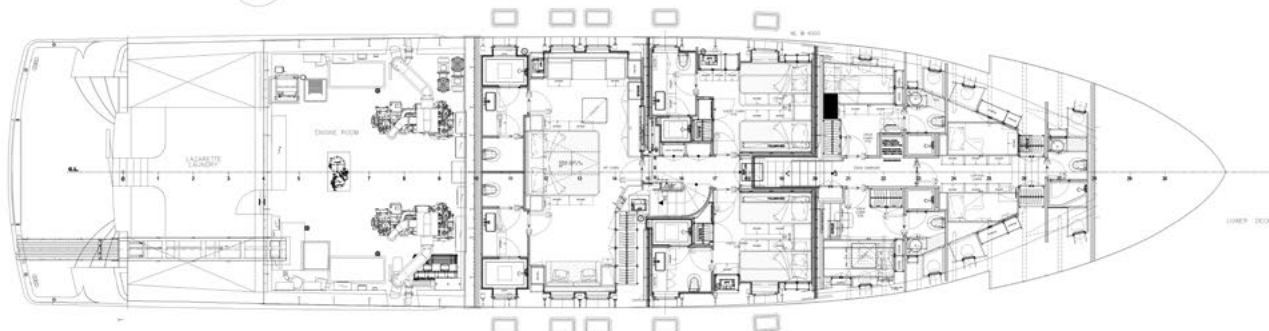
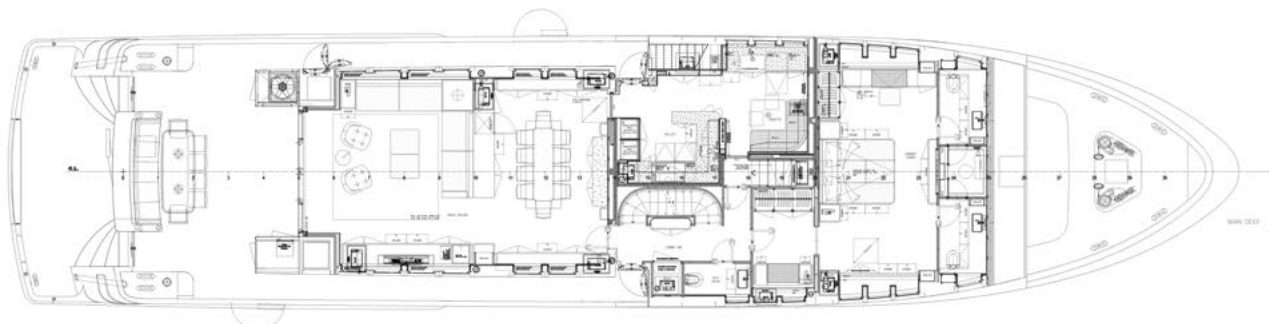
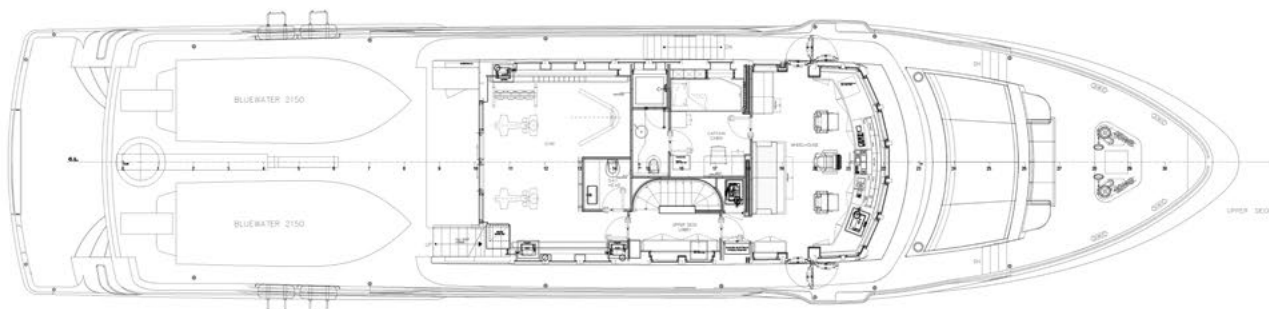
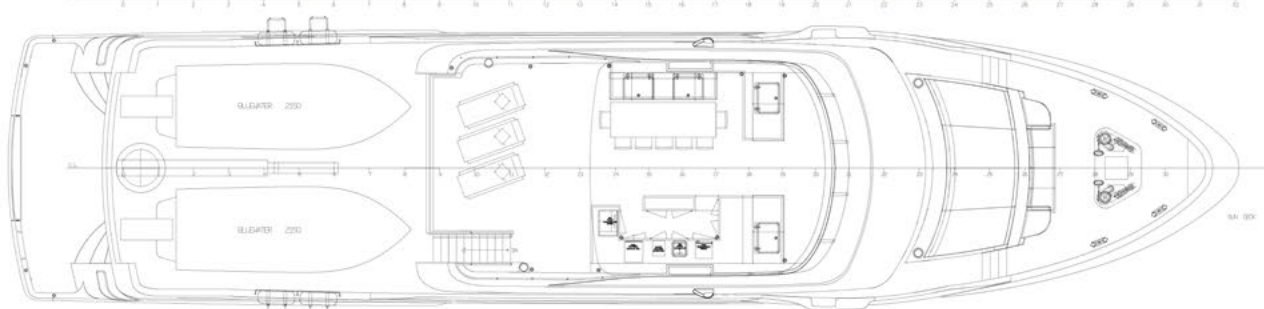




**CANTIERE
DELLE MARCHE**

explorer yachting starts here

10
ANNI
VER-
SARY
2010
2020





DIMENSIONI <i>DIMENSIONS</i>	Metri <i>Meters</i>	Piedi <i>Feet</i>
Lunghezza fuori tutto <i>Length overall</i>	35	115
Lunghezza al galleggiamento <i>Waterline length</i>	31,55	103.5
Baglio massimo <i>Max beam</i>	7,70	25.2
Altezza di costruzione <i>Depth, amidship</i>	4,30	14.1
Pescaggio a pieno carico <i>Draught, full load</i>	2,60	8.5
Dislocamento a pieno carico <i>Displacement, full load</i>	290 t	

CAPACITÀ <i>CAPACITY</i>	Litri <i>Liters</i>	Galloni <i>Gallons</i>
Gasolio <i>Diesel oil</i>	55'400	14'635
Acqua dolce <i>Fresh water</i>	9'390	2'480
Acque nere <i>Black water</i>	1'450	383
Acque grigie <i>Grey water</i>	11'360	3'000
Olio nuovo / Olio usato <i>Clean oil / Dirty oil</i>	466 / 466	123 / 123
Sentina <i>Bilge</i>	1'450	383

PROPULSIONE <i>PROPULSION</i>	kW
Motori <i>Engines</i>	2xCaterpillar C18 ACERT (500kW @2'100rpm) <i>2xCaterpillar C18 ACERT (500kW @2'100rpm)</i>
Trasmissioni <i>Gearbox</i>	2x ZF W650 libera installazione - gear ratio 4,057:1 <i>2x ZF W650 free standing - gear ratio 4,057:1</i>
Generatori diesel <i>Generator</i>	2x55 kW + 1x35kW Kohler <i>2x55 kW + 1x35kW Kohler</i>
Elica di manovra di prua e poppa <i>Bow and Stern thruster</i>	52 kW + 30 kW <i>52 kW + 30 kW</i>
Pinne stabilizzatrici <i>Stabilizer fins</i>	Elettriche, Zero Speed <i>Electrical, Zero Speed</i>

PRESTAZIONI <i>PERFORMANCE</i>	Nodi <i>Knots</i>
Velocità massima <i>Maximum speed</i>	13,0
Velocità di crociera <i>Cruise speed</i>	11,0
Autonomia <i>Range</i>	5'000 nm @ 10 nodi <i>5'000 nm @ 10 knots</i>

ALLOGGI <i>ACCOMMODATION</i>	Cabine <i>Cabins</i>
Passeggeri <i>Passengers</i>	8 (+2 Pullman Bed) / 4 Cabine <i>8 (+2 Pullman Bed) / 4 Cabins</i>
Equipaggio <i>Crew</i>	7 / 4 Cabine <i>7 / 4 Cabins</i>