



CANTIERE
DELLE MARCHE

explorer yachting starts here

10
ANNI
VER
SARY

CANTIERE DELLE MARCHE RJ 130





CANTIERE
DELLE MARCHE

explorer yachting starts here



RJ 130

RJ is a 40-metre steel and aluminium explorer yacht, featuring exterior and interior design by Francesco Paszkowski and naval architecture by Hydro Tec. She is the first model of the RJ range (formerly known as MG range) of which other two yachts, RJ115-28 and RJ115-29, have been already sold and are currently under construction at the CdM's facility in Ancona.

RJ is the latest addition in a small fleet of yachts belonging to the same experienced owner who had precise ideas about how his new yacht should look. This is one of many yachts sold by CdM to North European owners. On this occasion the buyer has been represented by the Camper & Nicholsons New Build Division in conjunction with broker Richard Higgins.

“The RJ range of yachts is definitely a game changer for CdM. With three sales and 5 interior designs commissioned to Francesco Paszkowski, the cooperation with multi-awarded designer has already proven to be the right choice!” says **Vasco Buonpensiere**, co-founder and Sales & Marketing Director of CdM.

Cantiere delle Marche is glad to announce that RJ 130 has been successfully launched

“It was a great pleasure to work with an owner who was keen to bring his experience to CdM,” says Vasco. *“Choosing CdM he offered a serious statement of trust in our yard's reliability and construction quality. I'd like to add that it's inspiring and a reason of pride to see that a growing number of experienced and motivated owners prefer CdM to build their yachts,”* Buonpensiere maintains. *“Our clients have fantastic ideas for cruising, diving, luxury toys and serious boating. They are planning adventures, getting involved in underwater exploration, marine life observation, etc. As a shipbuilder, it's exciting to be a part of making their ideas a reality, with this range merging even better the world of white yachts with that of real explorer vessels.”*

RJ is a luxury explorer yacht featuring a great wealth of exterior spaces with a real go-anywhere, do-anything expedition pedigree. Her elegantly austere silhouette brings the unmistakable signature of Francesco Paszkowski who, alongside her noteworthy geometry, introduced countless well-conceived features in terms of logistics, livability and functionality. With this yacht Paszkowski succeeded in treading a line between innovative lines and timelessness.

RJ hosts **12 guests in 5 suites** and **7 crew members** in 4 cabins.

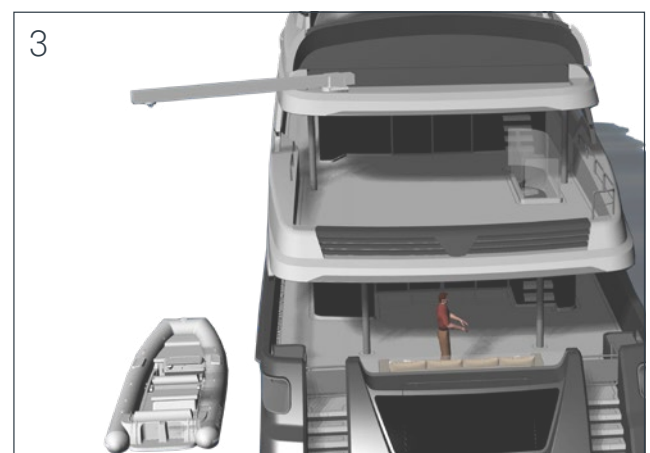
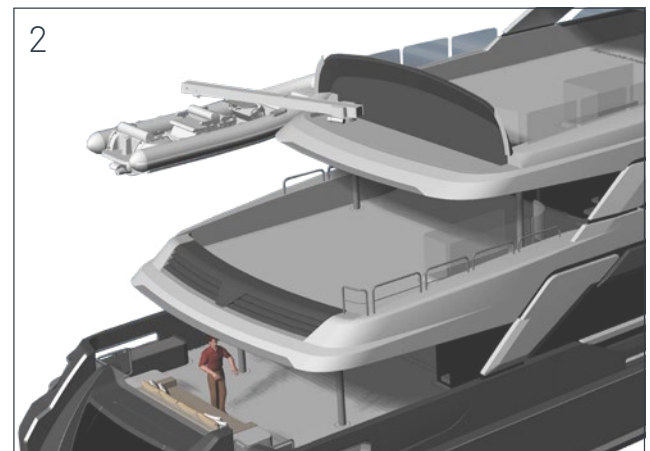
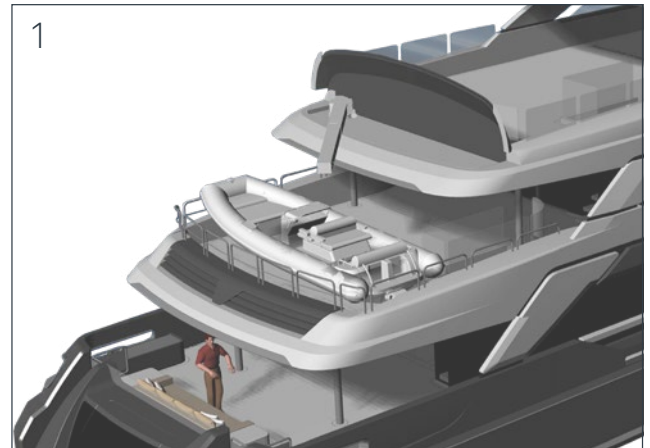


RJ features twin heavy duty MTU engines 10V2000M72, delivering 900kW each at 2250rpm, allowing a top speed of 14.5 knots. At the economic speed of 9 knots, she will have a remarkable range of around 5500nm with about 10% fuel left upon arrival.

Main Data

LOA	39.42m
LWL	35.20m
Beam	8.00m
Draught *	2.30m
Displacement *	320t
Engines	2 x MTU 10v2000M72 900kW @2250rpm
Maximum speed	14.5 knots
Range at 9 knots	5,500nm
Fuel capacity	58,000 litres
Fresh water capacity	6,000 litres
Black/grey/ bilge water	4,240 litres
Guests	10+2 (5 cabins)
Crew	7 (4 cabins)

* At full load



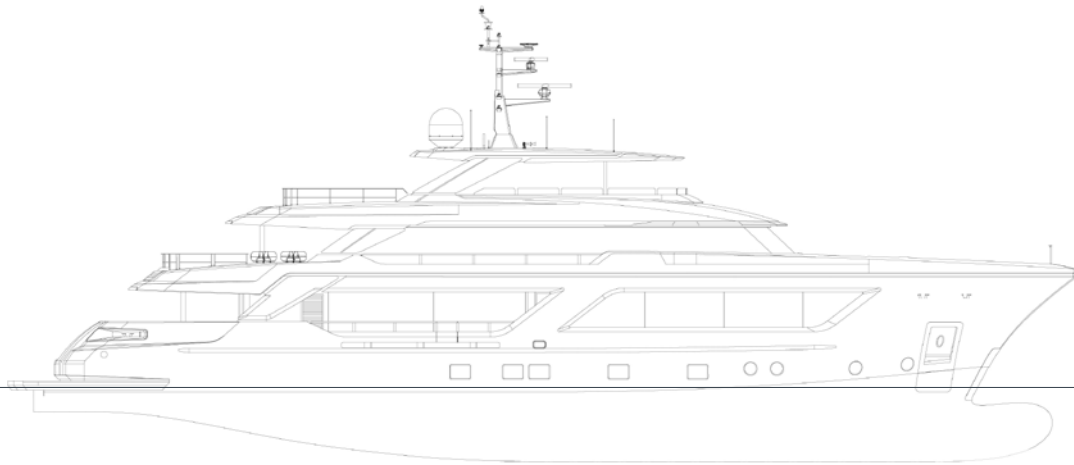
The tender will not be stored in a garage but on the Upper deck astern and is launched and hauled with a **crane perfectly concealed into the yacht's structure**. Once the tender is deployed the deck's vast flooring is available for lounging, dining or sunbathing. As many studies emphasize that tenders are kept in the water for around 93% of time when the owner is aboard, the stern garage has been dedicated to storing an array of water toys, diving gear and much more besides.



CANTIERE
DELLE MARCHE

explorer yachting starts here

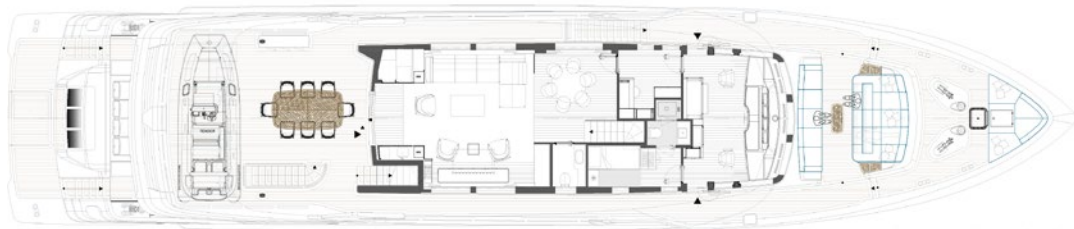
10
ANNI
VER
SARY



PROFILE



FLY DECK



UPPER DECK



MAIN DECK



LOWER DECK



Exterior Designer Statement: Francesco Paszkowski

A very good relationship has been established from the very first day with CdM team. It was an easy start and it kept on going on better and better. It looked like we have been working together since ever. Cantiere delle Marche always made the most to combine the owner's wishes and the design issues with technical aspects.

The brief was for an explorer with large social spaces both inside and outside, offering a close contact to the sea in order to enjoy staying on board during longtime cruising everywhere. We focused on combining the essence of an explorer with peculiar features in terms of comfort and liveability to design the yacht her owner was expecting.

As to the exterior the yacht highlights an accurate study of architectural geometry, a clean profile, wide windows on the main deck attempting to overthrow boundaries between exterior and interior, unrivalled panoramic view of outside while enabling lot of natural light inside.

We worked on several fundamental design features: the shape of the superstructure, overhangs and windows on the main deck. Priority was given to the exterior spaces with special emphasis on the idea of contact with the sea we obtained by lowering the gunwales on the main deck and by creating several alfresco areas.

One of the high points of the exterior spaces is the sun deck, a wide terrace with living, dining, sunbed areas and a swimming pool to allow guests to enjoy most of their cruising time on this deck. The central section of the superstructure is rounded, sloping fore and after, resulting almost invisible from the sun deck. Combined with the transparency along the outer perimeter there is no interruption to the view in all directions and it enhances visual contact with the sea and the surrounding environment. The upper deck provides two further large social areas for sunbathing and dining aft and forward.





Interior Designers Statement: Francesco Paszkowski and Margherita Casprini

The owner had precise ideas how his yacht should look like. We had already worked with him and we were confident we could meet his wishes for his new boat. It means we have been able to start from a privileged position in the interior design process. Cantiere delle Marche were e so strongly committed to achieving goals and the synergy we established with the yard was a great support for us in creating the new yacht and turning the owner's wishes into reality. We can really say a perfect team work has been created among the owner, the shipyard and our studio.

The interior design features balance and harmony of colours and materials throughout the yacht.

The owner brief for a welcoming and elegant interior was achieved by putting an emphasis on predominant light neutral hues, alternately combined with dark shades, designing some unique furniture pieces, matching the same materials in different ways while keeping the same atmosphere everywhere.

Polished bleached and brushed oak was selected for the walls together with rosewood and leather and combines with brushed oak slats chosen for the floor while lacquered panels were used for the ceilings. Polished rosewood was also selected for the furniture exterior while the furniture interior features rosewood with matt finishing.

Jerusalem Stone is the marble chosen for all the bathrooms which combines with rosewood and oak to provide the contrasting colour decoration between dark and light hues and to match the overall interior decoration.

Careful attention was given to the different finishing of the materials: extra clear glass was selected for the doors in the lobby and the shelves in the living on the main deck, smoky glass for wardrobe doors and the top of bedside tables. Leather enhances the understated yet elegant vibe on board by decorating the bedhead and the wardrobe doors in the master suite and covering the steps of the airy staircase connecting the decks inside, while wallpaper decorates the walls behind the bedheads in the Vip and guest cabins. Made-in-Italy manufacturers such as Minotti, Poltrona Frau and Flexform were selected for sofas, armchairs, chairs and coffee tables, while all custom-made beds, bedside tables and furniture, were designed by our studio. All bathroom fittings and accessories are by the Italian Zucchetti and Paffoni. Light spots are by Altraluce designed by our studio.

The layout offers accommodation to guests on the lower deck with two Vip suites and two guests, while the owner apartment is located forward on the main deck with walk-in wardrobe and private office. On top of that, the main deck accommodates the dining and living area and a large galley and a pantry. The upper deck features a further saloon and a cosy space nearby with a game table.

