



CANTIERE
DELLE MARCHE

explorer yachting starts here

10
ANNI
VER
SARY

CANTIERE DELLE MARCHE FLEXPLORER 142





CANTIERE
DELLE MARCHE

explorer yachting starts here



FLEXPLORER 142

Did Cantiere delle Marche find a way to get over all constraints caused by the Covid-19 pandemic? so it seems: Cantiere delle Marche commercial activity goes full steam ahead with another contract just signed and a few more on the final straights.

Cantiere delle Marche is glad to announce the sale of another yacht of the Flexplorer line: a **Flexplorer 142** has been sold to a young and enthusiast German owner, a keen sailor, who has previously owned several sailing and motor yachts.

“The sale of the Flexplorer 142, named Maverick, is a milestone because it demonstrates the strength of our new propositions,” says Sales Director **Vasco Buonpensiere**. *“When we first introduced our concept of flexible explorer yachts, we knew it would meet the taste of yacht owners eager to purchase a yacht which allowed them to sail far and wide. A yacht with a high degree of flexibility to adapt herself to different situations, able to carry big tenders and all equipment to venture safely to remote destinations yet comfortable and with all amenities of a true luxury yacht.”*

“Thanks to the excellent relationship with the Owner and his feedbacks, in spite of the present circumstances, details such as layout, general styling, power, size, special features and delivery date have already been defined,” Buonpensiere maintains.

The **Hydro Tec** bold exterior design will be completed with refined interiors by **Francesco Paszkowski and Margherita Casprini**. The owner's wishes and lifestyle match with Paszkowski's approach and impeccable poise and the yacht will feature top-end characteristics in terms of functionality and style.

As the Flexplorer 130 *Aurelia*, *Maverick* features an asymmetrical layout on the Main deck. The asymmetry consists in a full beam configuration to starboard which adds square metres to the salon while leaving a useful passageway to port side.

(For the records, the asymmetrical layout is not something invented in these last years: it actually made its first appearance on Camaleon B a 43m custom yacht designed by Paolo Caliari and his 'pupil' Sergio Cutolo in 2002, followed by 53m *Leo Fun* and *Vinydrea*).

The owner and his family have great plans to fully enjoy their new yacht: they will be firstly exploring many destinations around the Med, after which they will be heading to the Northern latitudes to cross the **Northwest Passage**, eventually.

The Passage has been a byword for mystery and endeavor but in recent decades the ice cover retreated and during just a few weeks in Summer it became possible to pass through. The crossing, however, still bears the risk to run into ice floes and a very robust hull is highly recommended. This is why **the Flexplorer 142 hull will feature – among other technical upgrades – an ice-belt of 22mm steel plates 400 mm above and below the waterline.**



CANTIERE
DELLE MARCHE
explorer yachting starts here

10
ANNI
VER
SARY





CANTIERE
DELLE MARCHE

explorer yachting starts here



Let's take a look at the Flexplorer 142 main features:

> Huge custom-built **A-frame crane** - a remarkable piece of engineering purposely developed by CdM and built in carbon fibre by Advanced Mechanical Solutions (AMS) - that, once the tender is launched, fits flush with the deck. It is positioned at the borders of the large cockpit on both sides and forward not to impinge on the ceiling height on the deck below which hosts a large gym, a sauna and a diving centre;

> **Collapsible bulwarks** that extend to the farthest end of the cockpit as all deck fittings have been positioned at a lower level on the swim platform. Once the bulwarks are folded down the whole aft deck becomes a vast beach area that covers more than 135 square metres;

> On the large cockpit a **Super Air Nautique G25 tender** and a **A27 sailing boat** will be stored and launched with the powerful A-frame crane;

> **Infinity pool** in the transom; when covered it becomes a storage for the deck furniture and water toys while underway;

> The main salon is **full-beam to starboard** side whilst a passage on the portside gives access to the dining area and galley in order to ease service from the galley to the outdoors and vice versa;

> On the Upper deck forward, a **large open area** hosts rescue boat and jet skis; at anchor, this area is furnished with loose sofas and sun beds becoming a further enjoyable lounging area en plein air;

> **Open galley.** A large galley on portside opens into the salon. It features a central island where family and friends can gather and have breakfast, an informal meal or share the preparation of food;

> **Guest accommodations** are spread over three decks:
4 ensuite cabins on the Lower deck;

1 Owner's stateroom on the Main deck forward;

1 Owner's stateroom on the Upper deck next to a single guest cabin. On this deck, a large walk-in wardrobe replaces the radio room.

> **Range and speed:** the Flexplorer 142 will be able to cruise **5,000 nautical miles** thanks to twin **MTU 10V2000M72**, 900kW each, and a fuel capacity of 60,000 litres. Max speed will be **14 knots**.

Going beyond our own limits and setting new standards, relentlessly, in terms of design, construction, engineering is the way we approach yacht building. This is why every new CdM yacht is the best we have ever built in its own unique way and the Flexplorer 142 will bring our standards to a new level.



CANTIERE
DELLE MARCHE

explorer yachting starts here

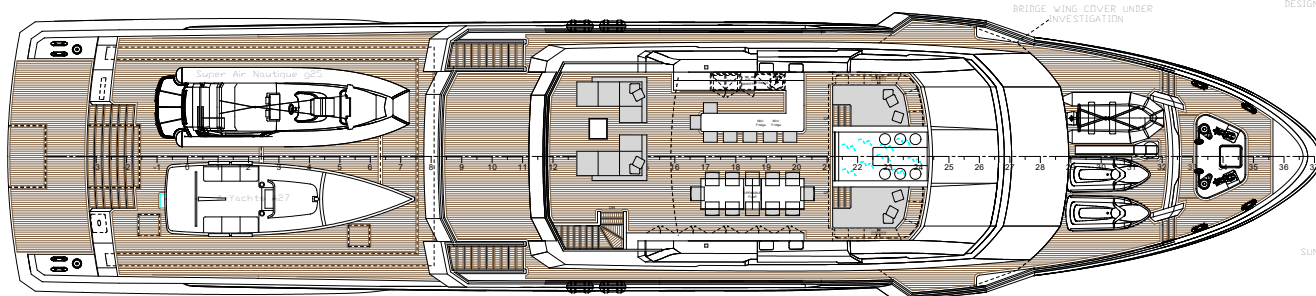
10
ANNI
VER
SARY



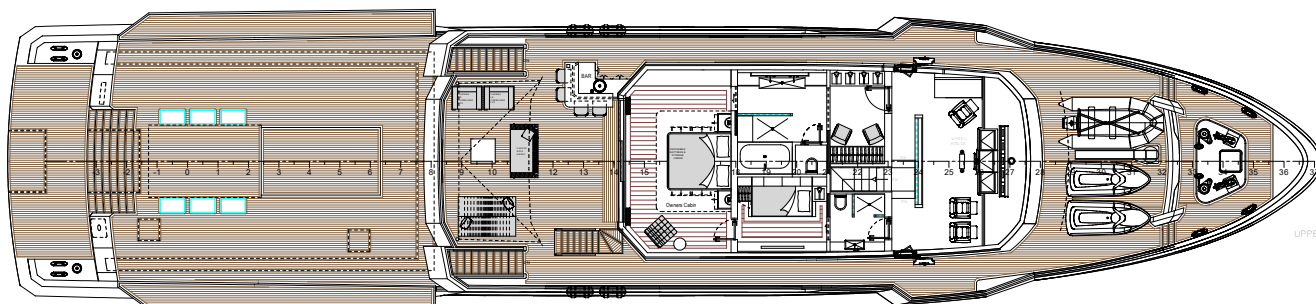
-6 -5 -4 -3 -2 -1 0 1 2 3 4 5 6 7 8 9 10 11 12 13 14 15 16 17 18 19 20 21 22 23 24 25 26 27 28 29 30 31 32 33 34 35 36 37 38

BRIDGE WING COVER UNDER
INVESTIGATION

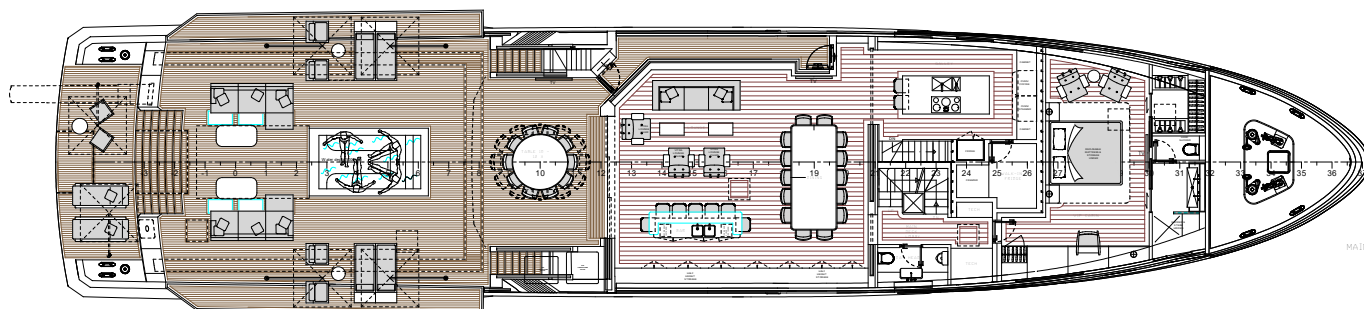
DESIGN SECTION



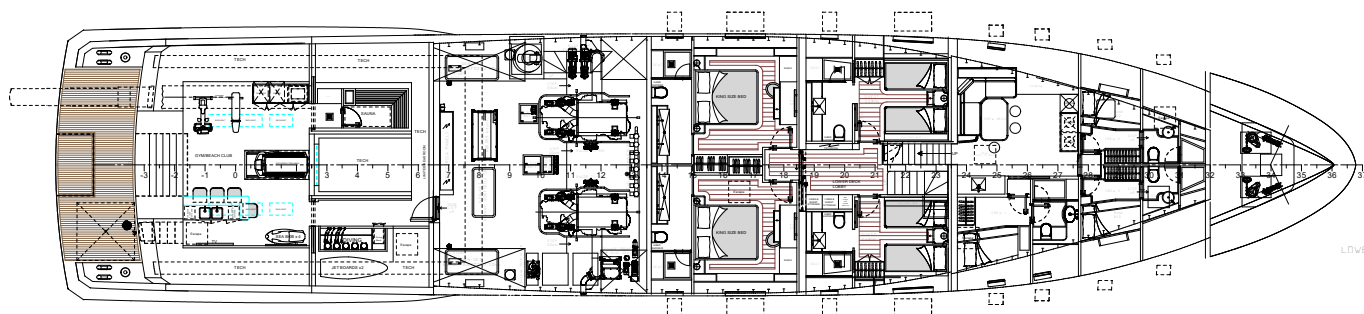
SUN DECK



UPPER DECK



MAIN DECK



LOWER DECK



Main Data

L.O.A.	43.2 m (141ft 7in)
Beam	8.60 m (28ft 2in)
Draught	2.62 m (8ft 6in)
Hull/Superstructure	Steel/Aluminium
Fuel capacity	60000 l (15.850 gal)
Fresh water capacity	8500 l (2.245 gal)
Engines	2 x MTU 10V2000M72 900kW@2250 rpm
Stabilizers	2 pairs, electrical, Zero Speed
Speed max	14 knots
Range at 10 knots	5000 nm
Guest cabins	7
Crew cabins	3