



CANTIERE
DELLE MARCHE

explorer yachting starts here

10
ANNI
VER
SARY

CANTIERE DELLE MARCHE LAUNCHES CROWBRIDGE

Cantiere delle Marche is glad to announce that Explorer 40.22, Crowbridge, a 42-metre ocean-going yacht designed by Tommaso Spadolini, has been successfully launched.

“This is our first launch after the lockdown due to the Covid-19 pandemic. It is an injection of optimism for us and for all the nautical compartment,” says **Vasco Buonpensiere**, Cdm’s co-founder and Sales & Marketing Director. *“The launch of Crowbridge has been postponed by just a few weeks. A great achievement. Our capability to keep on track showed to the yachting community, and ourselves, that we have been able to overcome brilliantly such an unexpected challenge thanks to our pragmatism and finely-tuned organization.”* **Ennio Cecchini**, Cdm’s founder and CEO, adds: *“Without rhetoric... this launch has a huge symbolic significance! We are proud and glad because it represents a tangible sign of restart. We are working full steam ahead and two more yachts will be launched shortly.”*

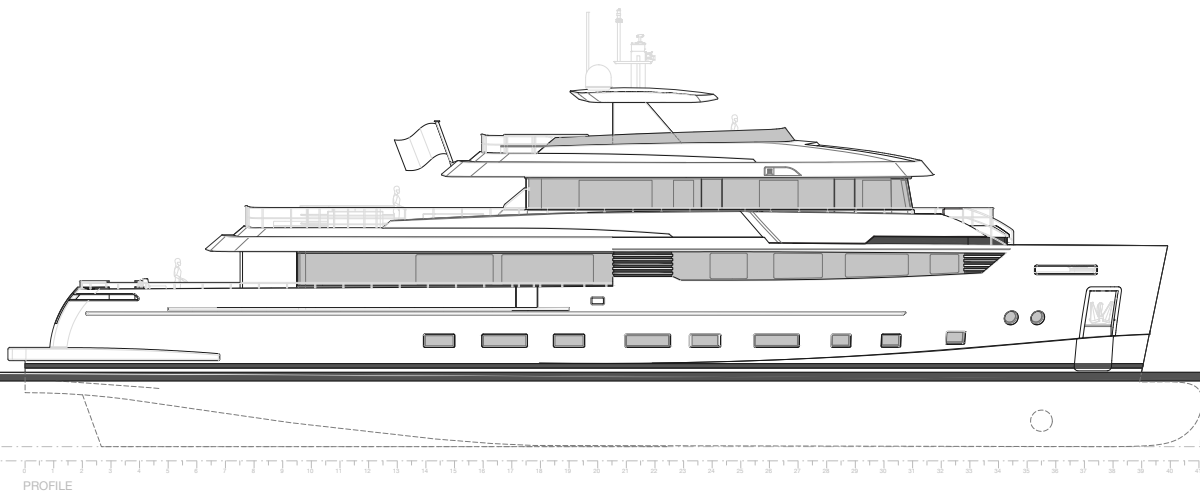
Crowbridge, a full custom explorer yacht, is another example of Cdm’s ingenious approach to yachting. Her **clean and well-defined lines** are undoubtedly those of a pure expedition vessel besides being cohesive to Cdm’s tradition. She encompasses all qualities that define a top-class explorer yacht designed to handle all weather conditions thanks to a very efficient, sea-kindly and

sea-worthy hull form. Safety and comfort of guests and crew are key points of her design. High-end equipment in a large and well laid out engine room designed for ease of service by crew is another fundamental feature of Explorer 40.22.

“This project stems from a client who wishes to have a strong, comfortable, reliable vessel featuring technical characteristics similar to that of a merchant ship. He is indeed an Italian shipowner and has a vast knowledge of the yachting market.” says Vasco Buonpensiere.

“He asked for a robust steel construction along with system redundancy and proven commercial-grade components to make his new yacht capable and reliable while maximizing quality of life aboard,” Buonpensiere adds. Throughout the design and building process the Owner availed himself of a team of technical consultants that usually work with him. *“The yacht is designed for family use with top class service, yet all family members don’t disdain to be involved in all sort of activities on board, cooking included,”* Vasco Buonpensiere maintains.

Taking a look at both her exterior design and interior layout, it can be seen that the purpose of Explorer 40.22 is twofold. Firstly she offers comfortable cruising to her guests and secondly she allows exclusive and extended holidays ‘far from the madding crowd’.



Exterior & Interior Design

“I worked with this client many times in the past and two of his most recent yachts bring my signature,” says Florentine designer **Tommaso Spadolini**. *“He asked me for a clean and simple silhouette and generous interior/ exterior areas to provide him and his family plenty of spaces to spend long holidays in total relax. These may seem very common requirements for a large yacht, yet he gave us precise indications about how private and social areas should be calibrated. He is an experienced yacht owner and he is aware of his family’s expectations and habits.”* As for Crowbridge’s interior design, the Owner asked Spadolini for an elegant yet understated style. *“The yacht has 7 guest suites, and 4 cabins for Captain and crew. All areas, both interior and exterior ones, both private and social, will pamper, delight and entertain all on board as they are on holiday,”* says Spadolini.

Naval Architecture

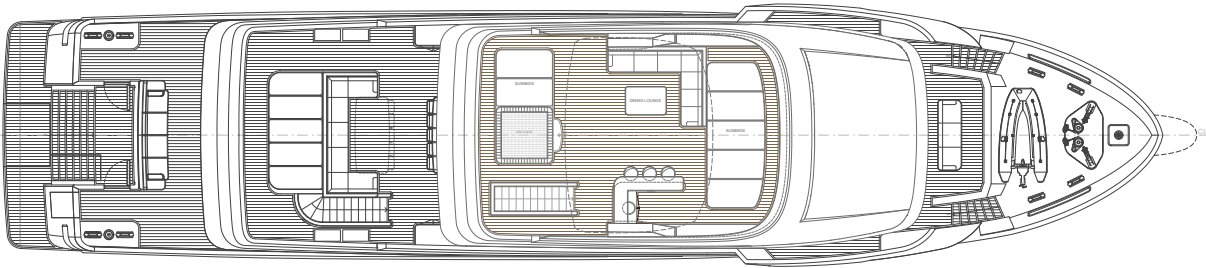
“The yacht has been designed to the standards set by a very experienced client who decided to switch from a planning yacht to a displacement one,” says **Sergio Cutolo**, founder and team leader at **Hydro Tec**. *“Explorer 40.22 has been a totally new challenge for us,”* Sergio maintains. *“The beautiful design from Studio Spadolini required the highest degree of integration with the naval architecture and engineering to keep its unicity and perfect balance. Having already worked with Tommaso Spadolini, this was a successful and smooth process. The naval architectural aspects have been influenced by the peculiar weight distribution and from the bow profile that has been designed to the Owner’s Specific esthetic requirements. The hull is a typical round bilge displacement hull, with generous bulbous bow and flat sections aft. The beam/draught ratio has been taken to an optimal value and special provisions were taken to allow for high diameter/high efficiency propellers. Maximum speed will be higher compared to similar designs, and this was duly considered in designing the waterlines. From the structural point of view we minimized the impact of the structures on the hull and superstructures to maximize internal spaces. In the superstructure we managed to create the perfect match between the designed interior layout and windows positioning/size.”*



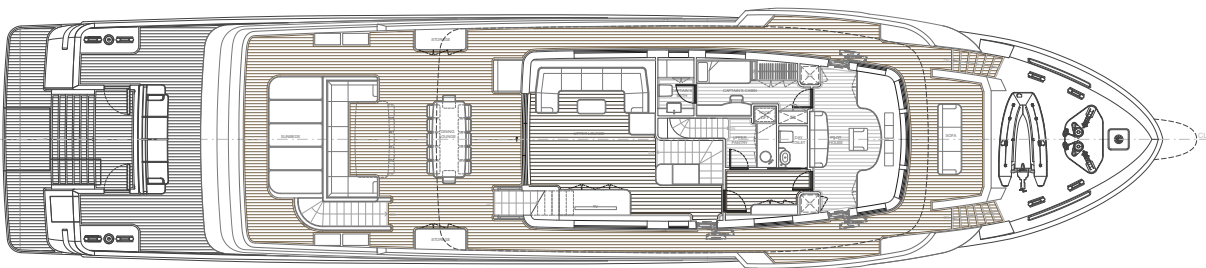
CANTIERE
DELLE MARCHE

explorer yachting starts here

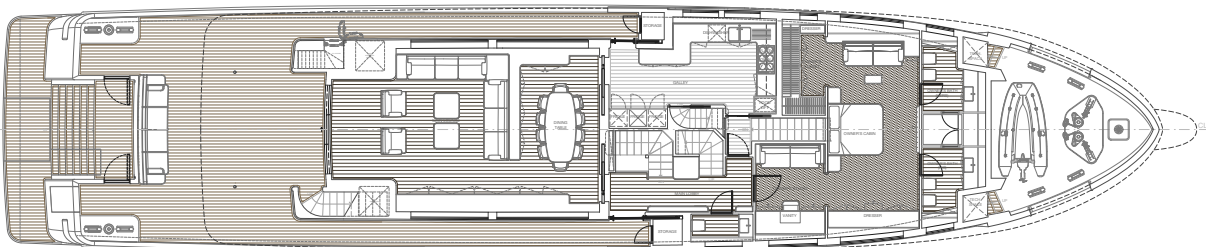
10
ANNI
VER
SARY



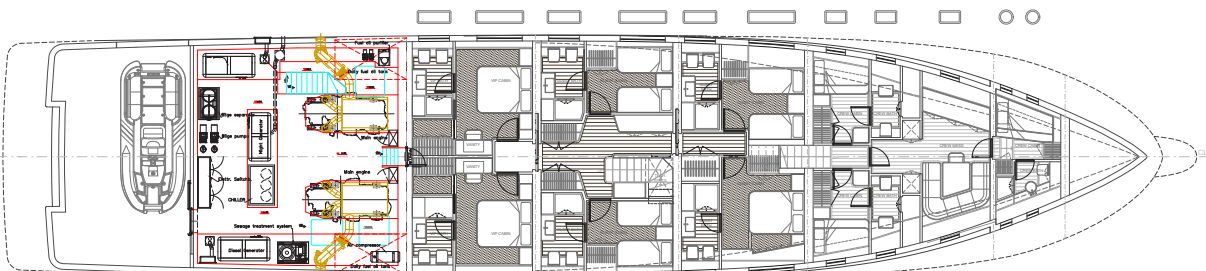
FLY BRIDGE



UPPER DECK



MAIN DECK



LOWER DECK



With a length overall of 42 metres and a beam of 8,50 metres, Explorer 40.22 has a displacement at full load of approximately 400 tons. Powered by two Caterpillar C32 Acert delivering 970kW each at 2100rpm, Explorer 40.22 will reach a top speed of 14 knots with a range of 3500nm at 10 knots.

Main Data

LOA	42.00m
LWL	39.00m
Beam	8.50m
Draft *	2.60m
Displacement *	400t approx.
Main engines	2 x Caterpillar C32ACERT 970kW each @ 2100rpm
Transmission	2 x ZF 3310 free standing
Generators	2 x Kohler 70kW + 1 Kohler 40kW
Maximum speed	14 knots
Range at 10 knots	3,500nm
Fuel capacity	60,000 litres
Fresh water capacity	8,000 litres
Black/grey/ bilge water	9,000 litres

*** At full load**



CANTIERE
DELLE MARCHE
explorer yachting starts here

10
ANNI
VER
SARY

