



CANTIERE
DELLE MARCHE

explorer yachting starts here

10
ANNI
VER
SARY

CANTIERE DELLE MARCHE PRE-OWNED SALES DEPARTMENT

Revillagigedo Islands, Mexico



CANTIERE
DELLE MARCHE
explorer yachting starts here

10
ANNI
VER
SARY

AFTER ONLY TWO WEEKS, ANOTHER SUCCESS FOR CDM'S PRE-OWNED SALES DEPARTMENT

**M/Y ACALA, DARWIN 102 SOLD
AN ENTHUSIAST NEW OWNER**

*"The sale of the **Darwin 102 Acala** to a new Owner demonstrates the strength of our **Pre-owned Sales Department**. Acala has been sold in collaboration with **Alex G. Clark** of **Denison Yachting** to an American Owner." says **Vasco Buonpensiere**, co-founder and Sales & Marketing Director of CdM. "We are particularly proud of this sale because it strengthens our presence on the other side of the pond," Buonpensiere maintains. "It follows the sale of another Darwin 102, Babbo, which we sold just a couple of weeks ago and another second hand CdM explorer yacht is about to be sold. No*

*need to add any comment. The CdM's Pre-owned Sales Department results go even beyond our more optimistic expectations." **M/Y Acala** is a 102 ft steel and aluminum explorer vessel launched by CdM in 2015. She belongs to the Darwin Class series designed by **Sergio Cutolo/Hydro Tec** of which 12 units have been sold to date. Having decided to have another yacht built by CdM, her Owner entrusted the yard's **Pre-owned Sales Department** to find a new passionate Owner for this yacht who gave him the chance to live unforgettable experiences and adventures on the seven seas.*



CANTIERE
DELLE MARCHE

explorer yachting starts here

10
ANNI
VER
SARY



Revillagigedo Islands, Mexico



CANTIERE
DELLE MARCHE

explorer yachting starts here

10
ANNI
VER
SARY



Valdes Peninsula, Argentina

Built for a very experienced seaman, who has owned yachts from all the best northern European shipyards among which Lürssen and Feadship, and who is passionate for diving, M/Y *Acala* features several customizations such as a 2t crane to launch a 6m+ tender, air-conditioned outdoor areas and a real diving centre in the lazarette with Nitrox compressor, tanks holder and lockers for all the diving gear.

With a length over all of 31m/102ft “a beam of 7,43m/24.3ft” a displacement of 240t and a Gross Tonnage of 244GT, *Acala* has cruised both in the Atlantic and Pacific Ocean bringing safely and comfortably its owner and his family and friends on the best and most secret diving spots.

Five guest cabins are located on Lower deck, with the Owner cabin forward, two VIP cabins aft and two twins amidships. Two pullman beds in both twin cabins take the total number of guests aboard to **12**. Crew quarters for 6 are located on the Main deck forward while the Captain cabin is on the Upper deck next to the wheelhouse. Guests can enjoy fully equipped outdoor areas: dining on main deck cockpit and upper deck

terrace, sunbathing on the foredeck, relaxing on sun deck equipped with a pool, bar and plenty of lounging areas. Bright and comfortable interiors on both Main and Upper deck offer all sort of amenities: spacious lounging areas, dining table, bar,

Simon Hamui designed interiors with a lot of character with striped liquidambar timber for wall panels and furnitur, hand-stitched leather drawers and cabinets resembling vintage Louis Vuitton wardrobe trunks, antique brass faucets and an elegant choice of loose furniture.

Acala features all the technical standards that have made CdM a benchmark in its sector: 12mm steel hull, cupronickel piping, independent rudders, automatic generator parallel, electric fins stabilizers, as well as wastewater treatment systems for black, grey, and bilge waters designed to be used 24/365.

M/Y *Acala* is powered with two 500 kW CAT C-18 engines that offer a top speed of 13 knots and frugal fuel consumption that gives a remarkable range of 4,500nm at 10 knots.



CANTIERE
DELLE MARCHE
explorer yachting starts here

10
ANNI
VER
SARY





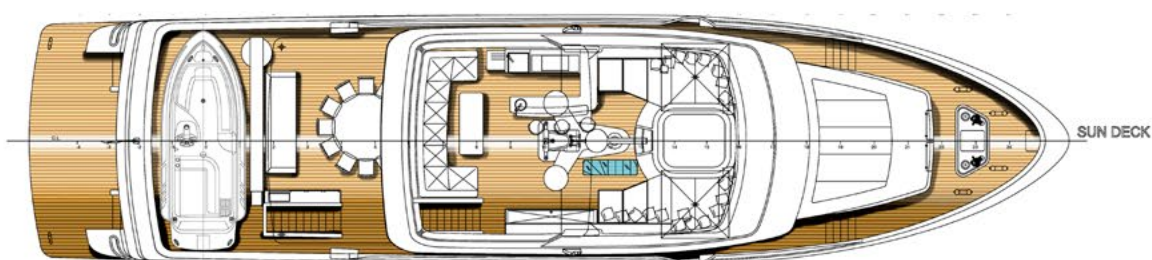
CANTIERE
DELLE MARCHE

explorer yachting starts here

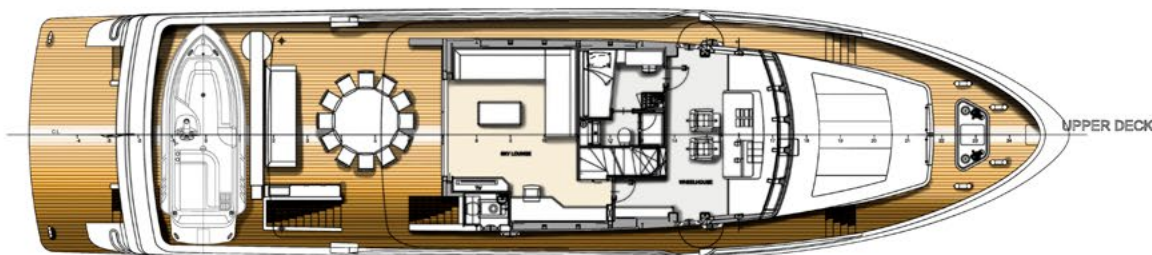
10
ANNI
VER
SARY



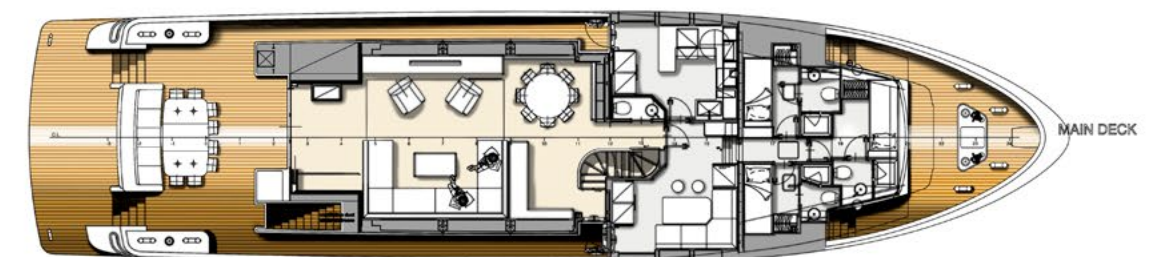
PROFILE



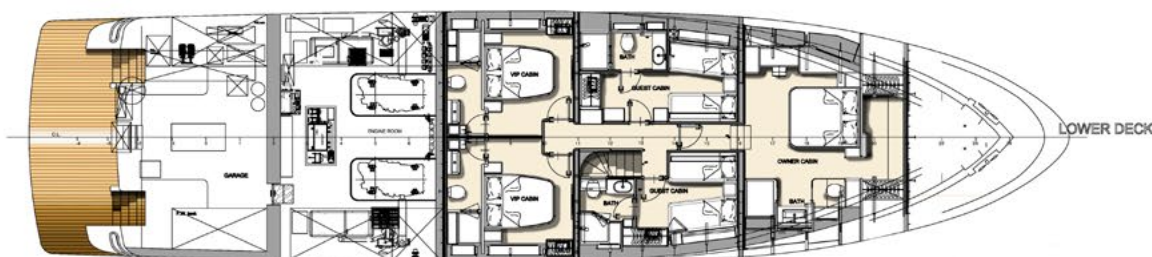
SUN DECK



UPPER DECK



MAIN DECK



LOWER DECK



GENERAL FEATURES

Model

Darwin Class 102

Hull Type

Full displacement

Hull Material

Steel

Superstructure Material

Aluminum

Classification

RINA Pleasure

DIMENSIONS

LOA

31 mt / 102 ft

LWL

28 mt / 92 ft

Beam

7.43 mt / 24.3 ft

Draught

Full load under the keel 2.45 mt / 8.84 ft

Displacement at full load

240 t / 264 US ton

Gross Tonnage

244 GT

SPEED

Maximum

13 kn

Cruise

10 kn

Range @ cruise speed

4500 nm

ACCOMMODATION

Cabins

5

Guests

12

Crew

7 in 4 cabins

CAPACITIES

Fuel

40.000 lt / 10 600 US gl

Fresh water

6.000 lt / 1 585 US gl

Black water

1.100 lt / 290 US gl

Grey water

2.100 lt / 550 US gl

Dirty oil

300 lt / 80 gl

Bilge

1.100 lt / 290 US gl

MECHANICAL EQUIPMENT

Engines

CaterpillarR C18 ACERT 2x 500kW
(680 CV) @ 1800 RPM

Stabilizers

CMC, electrical (zero speed
and underway)

Bow Thruster

Electric, 52 kW

Main Generators

2 x 50 kW Kohler

Automatic parallel between generators