



CANTIERE
DELLE MARCHE

explorer yachting starts here

ROSEY



NAUTA
AIR 86'

M/Y Rosey

YACHT INTRODUCTION

M/Y ROSEY is a stunning model from the incredibly successful and popular Cantiere delle Marche shipyard. This NAUTA AIR 86 is an all aluminium explorer yacht featuring elegant and airy design, huge interior spaces, long range and low fuel consumption levels allowing her owners to sail far and wide with maximum comfort. Inside, her exceeding interior has been designed by Francesco Guida.

M/Y ROSEY was the first yacht in the Cantiere delle Marche Nauta Air line, whose Explorer Yacht characteristics offer the perfect blend of superyacht style with the sturdy substance that characterises CdM's Explorer Yachts.

Interior and exterior spaces are kept in direct visual contact thanks to use of transparent glass in both windows and doors. The galley on the main deck was designed to be accessible both from indoors and out, and the central main salon is divided into conversation, relaxation and dining areas. The yacht also benefits from a huge 60 sq.m panoramic fly bridge, with a sun area, BBQ, bar, 2 dining areas and spacious al fresco lounge, specifically designed for easy outdoor living. A dedicated stairway leads from the main deck to the owner's suite for total privacy. A separate entrance leads to the lower deck and guest cabins .



Scan the QR code to watch
the walk through video

YACHT STATUS & PRICE

PRICE

€ 3.950.000

VAT STATUS

Paid

YEAR

2014, refit 2016

MAIN ENGINE HOURS

2600

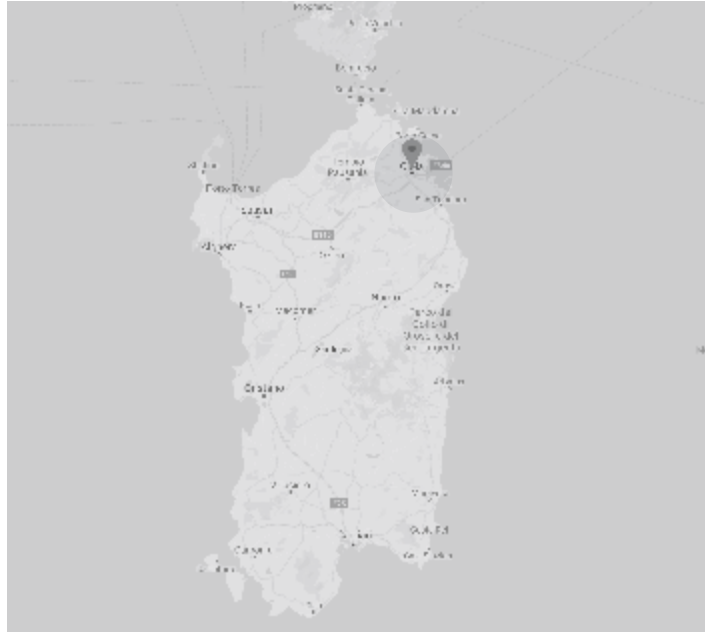
DIESEL GENERATORS HOURS

Port 5.311

Starboard 5.299

LOCATION

Olbia



TECHNICAL SPECIFICATION

GENERAL FEATURES

Model
Nauta Air 86

Hull Type
Semi displacement

Hull Material
Aluminum

Superstructure Material
Aluminum

Classification
RINA | MCA MGN 280
Short range

Flag
British

DIMENSIONS

LOA
27,15 m / 89,07 ft

LWL
23,90 m / 78,4 ft

Beam
6,5 m / 21,3 ft

Draught
Full Load 1,65 m / 5,41 ft

Displacement at full load
115 t / 126 US ton

Gross Tonnage
160 GT

SPEED

Maximum
16 kn

Cruise Speed
13,5 kn

Range @ 9 knots
3900 nm

ACCOMMODATION

Cabins
4

Guests
9

Crew
4 in 3 cabins

CAPACITIES

Fuel
22.000 lt / 5.800 US gl

Fresh water
2.100 lt / 550 US gl

Black water
1.000 lt / 260 US gl

Grey water
1.700 lt / 450 US gl

Clean oil
345 lt / 91 gl

Dirty oil
345 lt / 91 gl

Bilge
365 lt / 96 US gl
MECHANICAL EQUIPMENT

Engines
Caterpillar C18 ACERT 2x 885 HP
Engine hours 2.600

Water Maker
Idromar, 360 l/hr

Stabilizers
CMC, electrical (zero speed and underway)

Bow Thruster
Electric, 35 kW

Black Water Treatment
Selmar

Fuel Separator
Westfalia

Toilet System
Tecma

Boiler
1 x 150 l (1 x 40 US Gallons)

Air conditioning

- Winter: Exterior t = 0°C
Interior t = 20°C ±1°C
- Summer: Exterior t= 38°C
Interior t= 25°C ±1°C

ELECTRICAL SYSTEM

Main Generators

2 x 40 kW Kohler
Port diesel generator hours 5.311
Starboard diesel generator hours 5.299

Automatic parallel between generators

DECK EQUIPMENT

Docking Capstans

Maxwell VC 3000

Vertical Windlass

Maxwell VWC 4500

Anchor

2 x 140 Kg (2 x 309 pound)

Anchor Chain

Total length of 247,5 m, diameter 12.5 mm (812 ft, diameter 0,49 inches)

Crane

Opacmare mod. 3075/30 (500 Kg / 1100 pound max load)

APPLIANCES

Galley

- Miele Fridge/freezer: KFN 14827 SDED CS-2
- Miele Fridge K14827SD ED/CS-1
- Miele Dish Washer: G5930 Sci
- Miele Oven H5981
- Miele Hob: KM 6386 (230 volt 50/60 hz)
- Miele Hood: DA3490 Marine
- Miele Microwave oven: M 8161-2
- Franke Grinder Model: WD 75
- Nespresso Coffee maker
- Icematic C35Professional ice maker
- Miele Washer/dryer model WT 2780 WPM

Main Salon

- No.2 Wine fridges (38 bottles each)

Master cabin

- Mini fridge, Miele 5122 ui

Crew Area

- Miele Fridge 5122UI
- Nespresso Coffee machine KRUPS
- Hob CS1212I, Extractor hood DA 2170
- Chest size freezer, 1200*600
- Miele washing machine professional PW6065 plus
- Miele dryer professional PT7135C

Sun Deck

- No.3 built in Miele fridges
- Built in stainless steel BBQ

Main Deck Aft cockpit

- Miele Mini fridge K9122UI

TECHNICAL SPECIFICATION

ENTERTAINMENT SYSTEM

Main Salon

- Samsung latest generation LED TV 55" with SAT TV receiver, Dune HD Smart B1 player, Sonos connect, Tablet control,
- Air Play, B&W Speakers (No.3 200W, No.2 100W)

Owners cabin

- Samsung LED TV 40" with SAT TV receiver
- Dune HD Smart B1 player
- Sonos connect
- Tablet control
- Air Play, No.5 B&W ceiling speakers (100W)

No.3 Guest Cabins

- Samsung LED TV 28" with SAT TV receiver
- Ceiling speakers
- Sonos system with QNAP device with 8 docks for disks for an overall space of 32TB.

Crew Dinetter

Samsung TV 19"

Sun Deck

- Drop down Samsung latest generation LED TV 46" with Dune HD Smart B1 Player, SAT TV receiver, Sonos connect,
- No.8 JL Audio 8.8" waterproof speakers

Main Deck Aft Cckpit

- No.4 JL Audio 8.8" waterproof speakers in cockpit
- No.1 x JL Audio 10" waterproof speakers in the cockpit,

Main Deck Forward

- No.2 JL Audio 8.8" waterproof speakers

NAVIGATION AND COMMUNICATION EQUIPMENT

- Furuno Monitors 19" (No.2)
- Furuno Navnet 3D black Box System
- Furuno Radar Sensor UHD 64 nautical miles
- Mapmedia Chart for Navnet 3D
- Furuno GPS System GP-33 Color
- Furuno network sounder and transducer
- Hub for Navnet 3D / TZT network
- Furuno Wind/Weather sensor and data display
- Furuno AIS Transponder Class A
- Furuno Satellite compass
- Furuno Fluxgate - back-up heading sensor
- Simrad Autopilot with repeater on flybridge
- Furuno VHF DSC in main and flybridge helm
- Furuno Navtex NX-700 B
- MC Murdo EPIRB
- Ritchie Magnetic compass in main and flybridge helm
- Furuno Navnet TZT 14.1" for fly bridge station
- Furuno Crew mess data repeater
- FLIR Thermal and low light camera for night vision
- Furuno HF/MF transceiver

ANTENNAS

- Antenna Intellian i6 TV SAT Antenna 60cm
- WiFi and GSM receiver throughout the boat

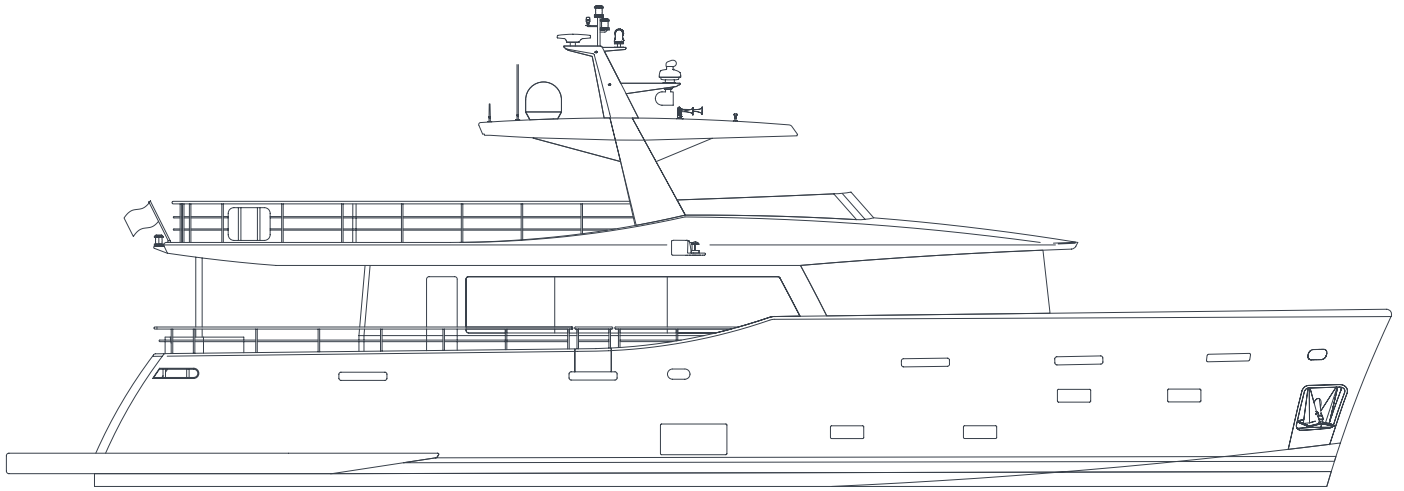
TENDER

Williams 445 Jet Tender with weather proof all over cover

OTHER

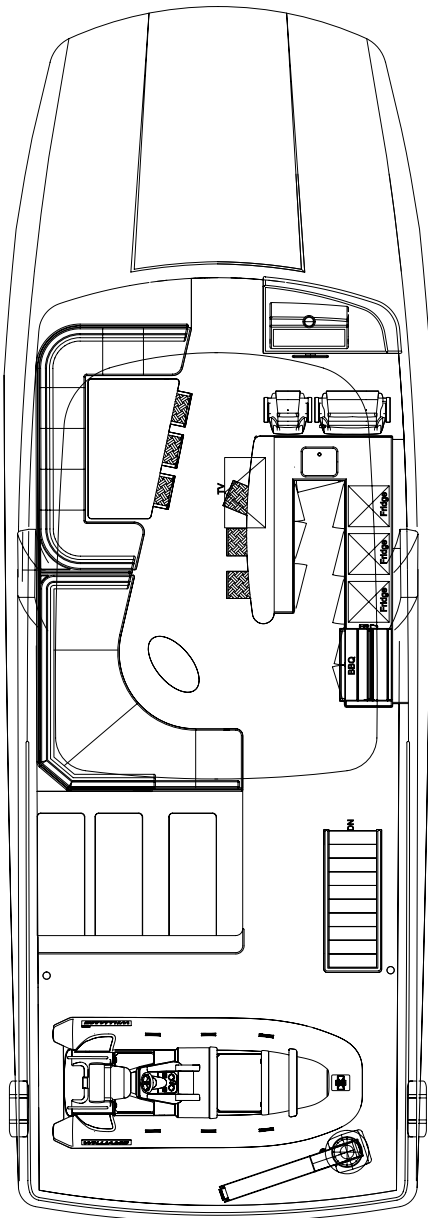
- Movable swimming platform Opacmare 338350, 5 steps (works as gangway)
- N. 9 underwater lights
- Bauer diving air compressor with 4 bottles
- Custom made windscreen cover
- Custom made covers for all exterior furnishing
- Internal Intercom System

ARRANGEMENT PLAN



Sun Deck

62.8 m²
675.9 ft²

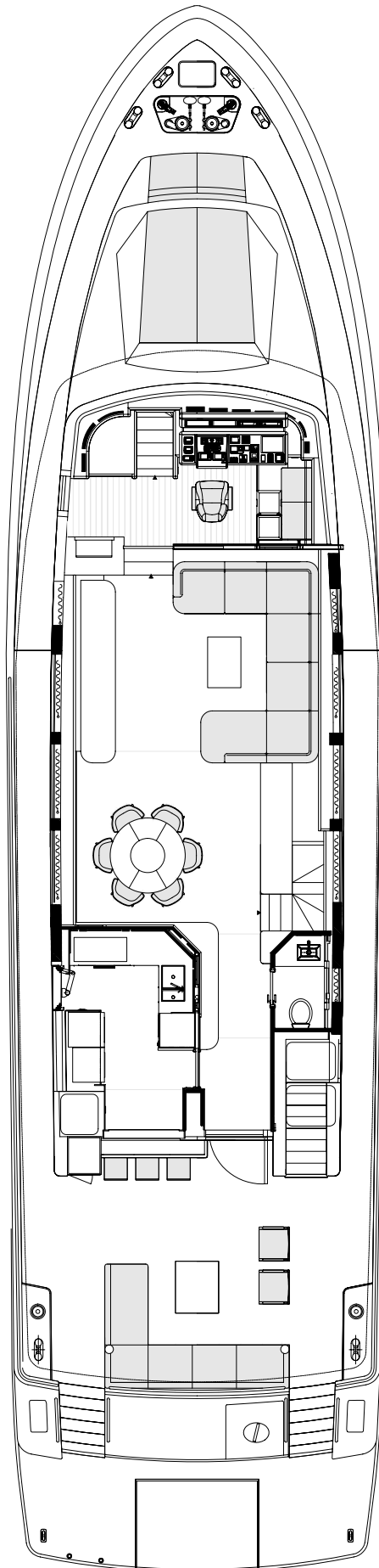


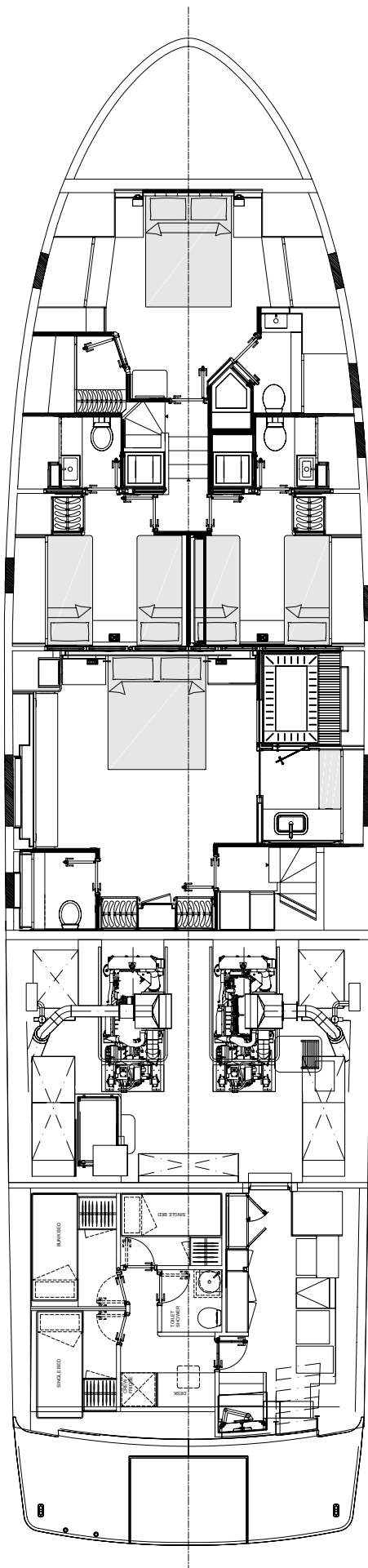
Main Deck

Main Salon
32,9 m²
354,1 ft²

Galley
6.8 m²
73,1 ft²

Aft Cockpit
27.8 m²
299.2 ft²





Lower Deck

VIP Cabin
17.4 m²
187.292 ft²

Guest Cabin
PTS
10 m²
107.6 ft²

Guest Cabin
STB
10 m²
107.6 ft²

Owner Cabin
27.8 m²
299.2 ft²

Crew area
24.7 m²
265.8 ft²

PHOTO GALLERY EXTERIOR

ROSEY











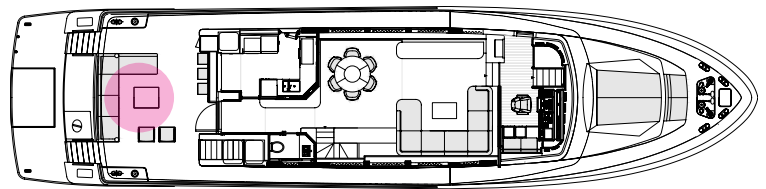


PHOTO GALLERY DECKS

ROSEY

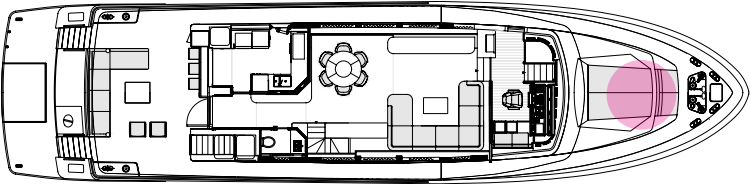


Main Deck Cockpit



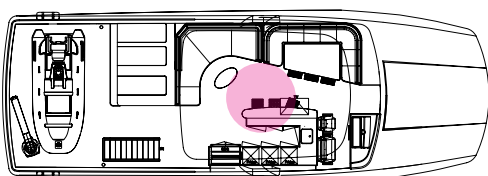


Main Deck - Foredeck



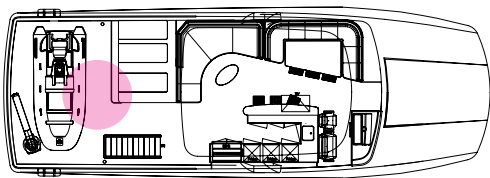


Sun Deck





Sun Deck





Sun Deck

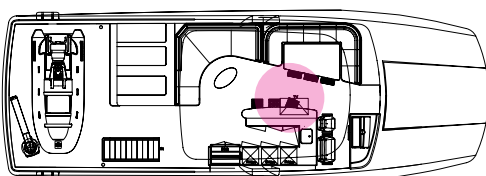
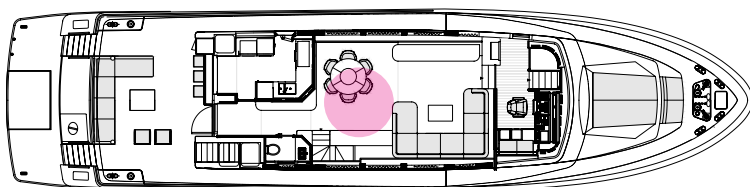


PHOTO GALLERY INTERIORS

ROSEY

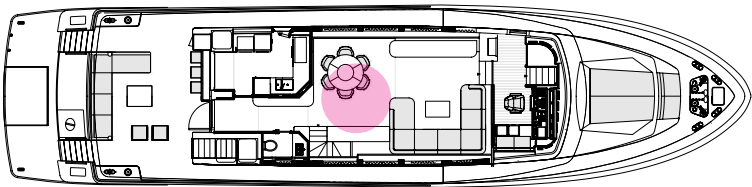


Main Salon



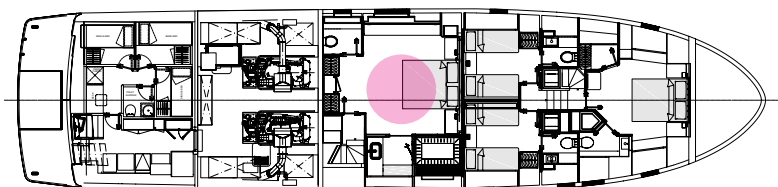


Main Salon





Owner Cabin

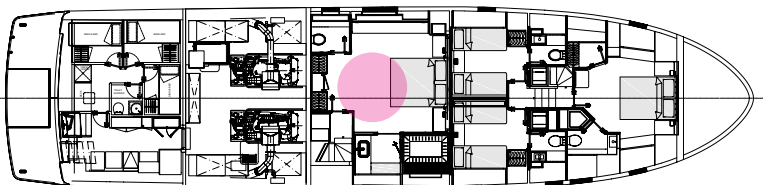




Owner Cabin

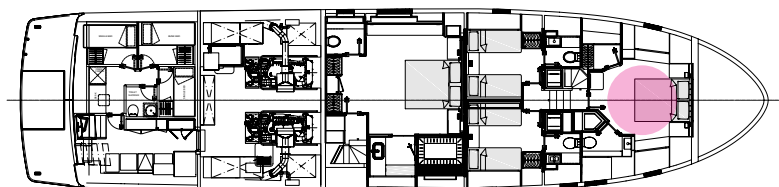


Owner Cabin Bathroom





VIP Cabin

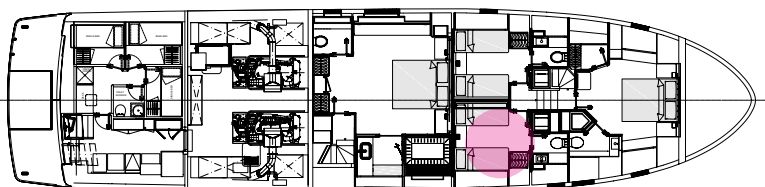




Guest Cabin Starboard Side



Guest Cabin Bathroom Starboard Side

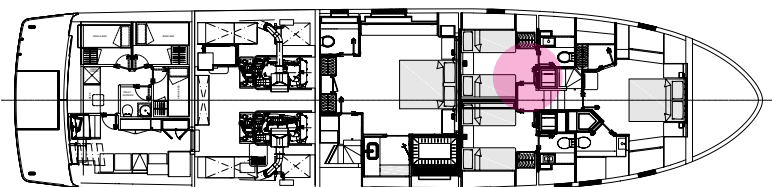




Guest Cabin Port Side

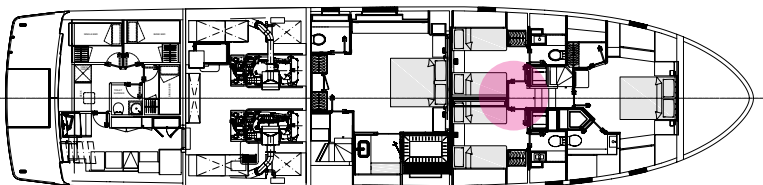


Guest Cabin Bathroom Port Side





Wheelhouse





CANTIERE
DELLE MARCHE
explorer yachting starts here