



CANTIERE
DELLE MARCHE

explorer yachting starts here

ACALA



DARWIN
CLASS 102'

M/Y Acala

YACHT INTRODUCTION

M/Y Acala is a 102 ft steel and aluminum Explorer vessel, part of the fortunate Darwin Class series that counts nowadays 12 units already sold.

Her beam of 7,43 mt (24 feet) and displacement hull account for the humongous volume of 244 GT, much more than vessels of similar size.

Built for a very experienced seaman, who has owned yachts from all the best northern European shipyards among which Amels, Lürseen, Feadship and passionate for diving, M/Y Acala features several customizations: a 2 tons crane can launch 6+ mt (19'+) tender, air-conditioned outdoor areas and a diving center in the lazarette with Nitrox compressor, tanks holder and proper lockers for all the diving gear.

The five guest cabins are located on lower deck, with the Owner cabin forward, two VIP cabins aft and two guests amidships. In here, two bunk beds take the total number of guests aboard to 12. This arrangement can be easily refitted as shown at page 9 of this brochure: a 26,6 sq m (286 sq ft) Owner cabin can replace the sky lounge and captain cabin on upper deck, thus bringing the number of guest cabin to six. At the same time (or alternatively) a 24,8 sq m (267 sq ft) full beam VIP cabin (or second Owner cabin) can be made out of the two VIP cabins on lower deck.

The guests can count on a crew of up to 7 accommodated in 4 cabins: captain cabin behind the wheelhouse and the rest on main deck forward.

Along with the diving center, guests can enjoy their time at sea in the fully equipped outdoor areas: dining on main deck cockpit and upper deck cockpit, sunbathing on foredeck, chilling on sun deck. In here they can take advantage of a pool, bar and plenty of lounge space.

The interiors are designed by the Archistar Simon Hamui, able to give an Explorer twist to salons and cabins thanks to a wise blend of liquidambar timber (also called sweetgum), hand-stitched leathers drawers and cabinets resembling vintage Louis Vuitton travel bags, antique brass Waterworks faucets and an elegant choice of free-standing furniture.

For the ones looking for a more contemporary design, an interior design refit option is suggested at pages 39-42. The timber is painted to conceal the grain and wood pattern, fabrics embellishes the windows frames, the rug and free standings are replaced with others more in line with the new color palette. While the renderings refer to the main salon, similar changes can be replicated on the other guest cabins, of course.

The technical standards that have made CdM a benchmark in its sector have been maintained: 12mm steel hull, cupronickel piping, independent rudders, automatic generator parallel, electric fins stabilizers, as well as wastewater treatment systems for black, gray, and bilge waters that have been adapted from the world of work ships and designed to be used 24/365.

M/Y Acala is powered with two 500 kW CAT C-18 engines, guaranteeing a top speed of 13 knots and a range of 4.500 nm at 10 knots of speed.



Scan the QR code to watch M/Y Acala in Fort Lauderdale



Scan the QR code to watch M/Y Acala surrounded by tiger sharks



YACHT STATUS & PRICE

PRICE

€ 6.990.000
USD 7.750.000

VAT STATUS

Not Paid

YEAR

2015

CLASSIFICATION

RINA Pleasure

NUMBER OF GUEST CABINS

5 (12 guests)

MAIN ENGINES HOURS

Port 3.241
Starboard 3.236

DIESEL GENERATORS HOURS

Port 7.277
Starboard 7.191

LOCATION

Miami
(U.S.A.)



TECHNICAL SPECIFICATION

GENERAL FEATURES

Model

Darwin Class 102

Hull Type

Full displacement

Hull Material

Steel

Superstructure Material

Aluminum

Classification

RINA Pleasure

Flag

Cayman Islands

Port of Registry

George Town

DIMENSIONS

LOA

31 mt / 102 ft

LWL

28 mt / 92 ft

Beam

7.43 mt / 24.3 ft

Draught

Full load under the keel 2.45 mt / 8.84 ft

Full load under the skeg 2.86 / 9.38 ft

Displacement at full load

240 t / 264 US ton

Gross Tonnage

244 GT

SPEED

Maximum

13 kn

Cruise

10 kn

Range @ cruise speed

4500 nm

ACCOMMODATION

Cabins

5

Guests

12

Crew

7 in 4 cabins

CAPACITIES

Fuel

40.000 lt / 10 600 US gl

Fresh water

6.000 lt / 1 585 US gl

Black water

1.100 lt / 290 US gl

Grey water

2.100 lt / 550 US gl

Dirty oil

300 lt / 80 gl

Bilge

1.100 lt / 290 US gl

MECHANICAL EQUIPMENT

Engines

CaterpillarR C18 ACERT 2x 500kW
(680 CV) @ 1800 RPM

Engine hours

2.415

Water Maker

Idromar, 7200l/day

Stabilizers

CMC, electrical (zero speed
and underway)

Bow Thruster

Electric, 52 kW

Black Water Treatment

Selmar

Fuel Separator

Alfa Laval

Toilet System

Tecma

Boiler

2 x 300 l (2 x 80 US Gallons)

Air conditioning

Condaria for Mediterranean use:

- Winter: Exterior t = 0°C
Interior t = 20°C ±1°C
- Summer: Exterior t = 38°C (R.M. = 70%)
Interior t = 22°C ±1°C (R.M. = 55%)

ELECTRICAL SYSTEM

Main Generators

2 x 50 kW Kohler

Automatic parallel between generators

ASEA 36 kVA shore power converter

DECK EQUIPMENT

Docking Capstans

MIUR VR 4000

Vertical Windlass

MIUR VRC 4500

Anchor

2 x 225 Kg (2 x 496 pound)

Anchor Chain

2 x 137.5 mt, diametro 14 mm (2 x 451 ft, diameter 0,55 inches)

Gangway

Electro-hydraulic Bitecnomare "Magnum due" : 5,3 mt X 0,6 mt (17.4 ft x 2 ft)

Crane

Sanguinetti (2000 Kg max load)

APPLIANCES

Galley

- AEG Induction hob HK874400FB
- Miele dishwasher speed plus PG8056
- Nr 2 Miele ed/cs fridge k 14820 sd
- Miele hood da 3490
- Nr 2 MKN Combi oven Junior

Dinette

- Miele Microwave 6022SC
- Miele ed/cs fridge k 14820 sd
- Miele Freezer FN12827
- Miele washing machine WKH130
- Miele tumble dryer TKG450 WP

Lazarette

- Miele washing machine WKH130
- Miele tumble dryer TKG450 WP

Sun deck

- LYNX gas bbq Grills 27"
- Isotherm Drawer Box DR 105 L Inox
- Isotherm ice maker icedrink clear

Upper deck cockpit

- Isotherm Drawer Fridge DR 85 Inox

Main deck cockpit

- Isotherm Cruise 90 Freezer inox
- Isotherm Ice maker icedrink clear inox
- Isotherm Drawer Box DR 105 L Inox

TECHNICAL SPECIFICATION

ENTERTAINMENT SYSTEM

Main salon

- TV LED Samsung Tv (55") + TV lift
- Denon amplifier
- Kit Bose 5 and subwoofer
- Denon DVD Bluray player
- Console Sony Playstation 4
- Sonos connect
- I Pad Air 128 GB
- Dock station I Pad Air
- Apple TV
- Telephone Jacob Jensen

Owner Cabin

- TV LED Samsung Tv (46")
- Sonos playbar
- Sonos subwoofer
- I Pad Air 128 GB
- Dock station I Pad Air
- Apple TV
- Telephone Jacob Jensen

Sky lounge

- TV LED Samsung Tv (55") + TV lift
- Denon amplifier
- Kit Bose 5 and subwoofer
- Denon DVD Bluray player
- Console Sony Playstation 4
- Sonos connect
- I Pad Air 128 GB
- Dock station I Pad Air
- Apple TV
- Telephone Jacob Jensen

VIP Cabin STB

- TV LED Samsung Tv (40")
- Denon amplifier
- 2 x Bose speakers
- I Pad mini 128 GB
- Dock station I Pad mini
- Apple TV
- Telephone Jacob Jensen

VIP Cabin PTS

- TV LED Samsung Tv (40")
- Denon amplifier
- 2 x Bose speakers
- I Pad mini 128 GB
- Dock station I Pad mini
- Apple TV
- Telephone Jacob Jensen

Guest Cabin PTS

- TV LED Samsung Tv (22")
- Denon amplifier
- 2 x Bose speakers
- I Pad mini 16 GB
- Dock station I Pad mini
- Apple TV
- Telephone Jacob Jensen

Guest Cabin STB

- TV LED Samsung Tv (22")
- Denon amplifier
- 2 x Bose speakers
- I Pad mini 16 GB
- Dock station I Pad mini
- Apple TV
- Telephone Jacob Jensen

Dinette

- TV LED Samsung Tv (22")
- Denon amplifier
- 2 x Bose speaker
- I Pad Air 128 GB
- Dock station I Pad Air
- Apple TV

Captain Cabin

- TV LED Samsung Tv (22")
- Denon amplifier
- 2 x Bose speaker
- I Pad Air 128 GB
- Dock station I Pad Air
- Apple TV
- Telephone Jacob Jensen

Wheelhouse

- Bose soundlink Bluetooth
- Telephone Panasonic / display LCD

Galley

- Bose soundlink Bluetooth

Lazarette

- Sonos Connect amplifier
- 4 x JL speakers
- I Pad mini 16 GB
- Telephone Jacob Jensen

Main deck cockpit

- Sonos Connect amplifier
- 2 x JL speakers
- I Pad mini 128 GB

Upper deck cockpit

- Sonos Connect amplifier
- 4 x JL speakers + subwoofer

Upper deck foredeck

- Sonos Connect amplifier
- 2 x JL speakers

Sun deck

- Sonos Connect amplifier
- 4 x JL speakers + subwoofer
- I Pad mini 128 GB

Wi-Fi

- Cisco switch 24 port
- Nr 6 Access points

NAVIGATION AND COMMUNICATION EQUIPMENT

- Nr°4 Furuno monitor 19”
- Nr°1 radar Furuno FAR2117, radome 8 ft, X band
- Nr°1 radar Furuno Navnet 3D MFDBB MPU, radome 6 ft
- Nr°2 GPS Furuno GP-33
- Nr°1 Furuno trasducer 525ST
- Nr°1 Data repeater FI-501
- Nr°3 Data repeater FI-504
- Nr°1 wind sensor FI-5001
- Nr°1 Furuno Satellite Compass SC50
- Nr°1 Furuno AIS FA150
- Nr°1 Furuno Navtex NX700B
- Nr°2 Furuno Data Repeater FI-504 for crew mess
- Nr°1 NAVNET TZT 9”
- Nr°1 monitor for TVCC, Neovo X-15AV
- Nr°1 Transas ECS SW NAVISAILOR 4000
- Nr°1 Raytheon Anshutz Gyrocompass Standard 22
- Nr°1 Raytheon Anshutz NP60
- Nr°1 Radio telephone VHF FURUNO FM8900S GMDSS Class A
- Nr°1 Radio telephone VHF FURUNO FM-4721,DSC
- FLIR M-618CS

CCTV SYSTEM

- CCTV camera on engine room and main deck
- CCTV monitor in wheelhouse and crew area

ANTENNAS

- Nr°1 Satellite Antenna VSAT Intellian T100W (1.05 mt, 3.4 ft)
- Nr°1 Satellite Antenna TVSTAT Intellian V100GX
- GSM antenna
- FM receiver

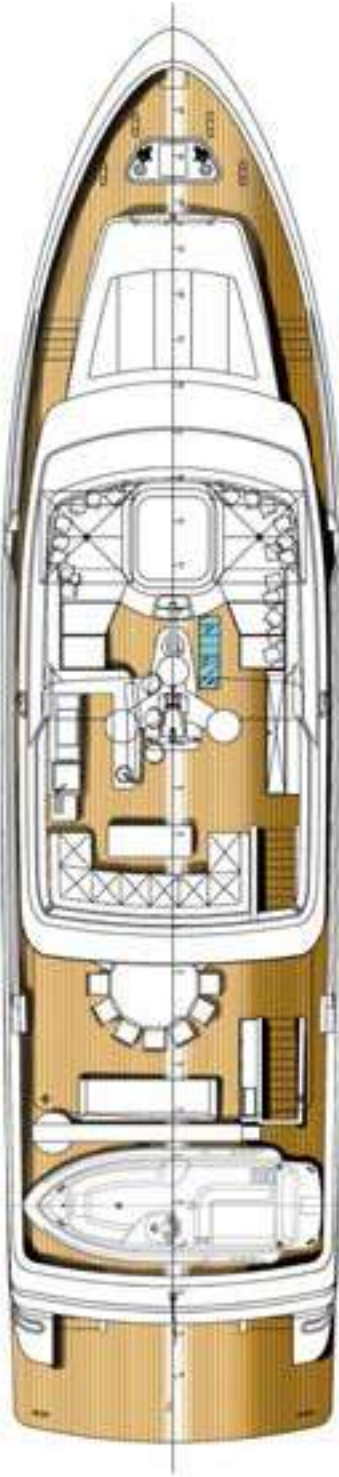
OTHER

- Movable swimming platform: Transformer Opacmare 4 steps / 980 Kg
- Nr 20 underwater lights
- Nr 4 wind stopper doors
- Wind protective awning for main deck (Norvegese)
- Skylight glass on sun deck with motorized curtain
- Plug-in shower on swimming platform
- Diving compressor
- Sea chests Cathelco anti fouling system
- Sun deck aft awning
- Upper deck aft awning

AS IS ARRANGEMENT PLAN

Sun Deck

47 m²
505.9 ft²



Upper Deck

Forward sunbed area
13.7 m²
147 ft²

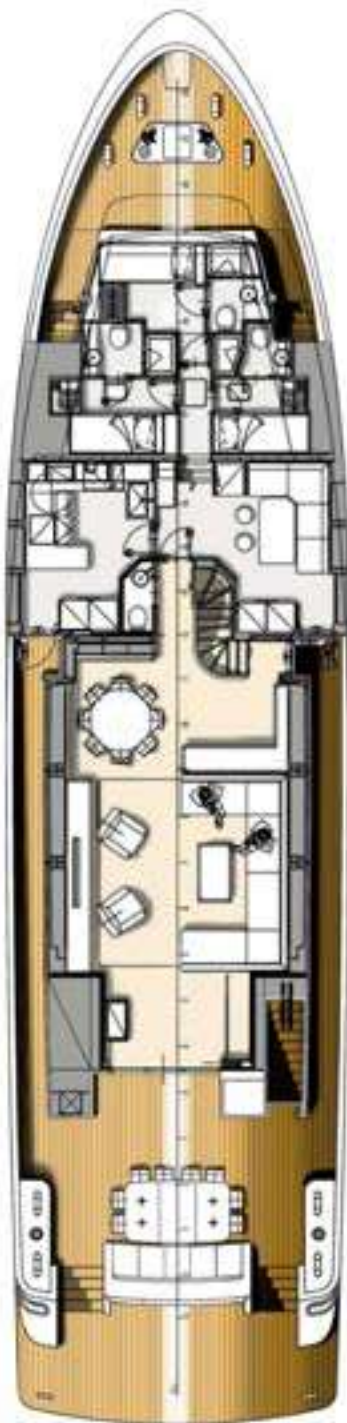
Wheelhouse
15.3 m²
164.6 ft²

Captain Cabin
7.7 m²
82.8 ft²

Sky Lounge
18.9 m²
203.4 ft²

Aft Cockpit
51.8 m²
55.5 ft²





Main Deck

Crew area
22.3 m²
240 ft²

Dinette
10.7 m²
115 ft²

Galley
8.5 m²
91.4 ft²

Main Salon
44.4 m²
477.9 ft²

Aft Cockpit
24.1 m²
259.4 ft²



Lower Deck

Owner Cabin
23.2 m²
249.7 ft²

Guest Cabin
STB
12.4 m²
133.4 ft²

Guest Cabin
PTS
13.6 m²
146.3 ft²

VIP Cabin STB
12.4 m²
133.4 ft²

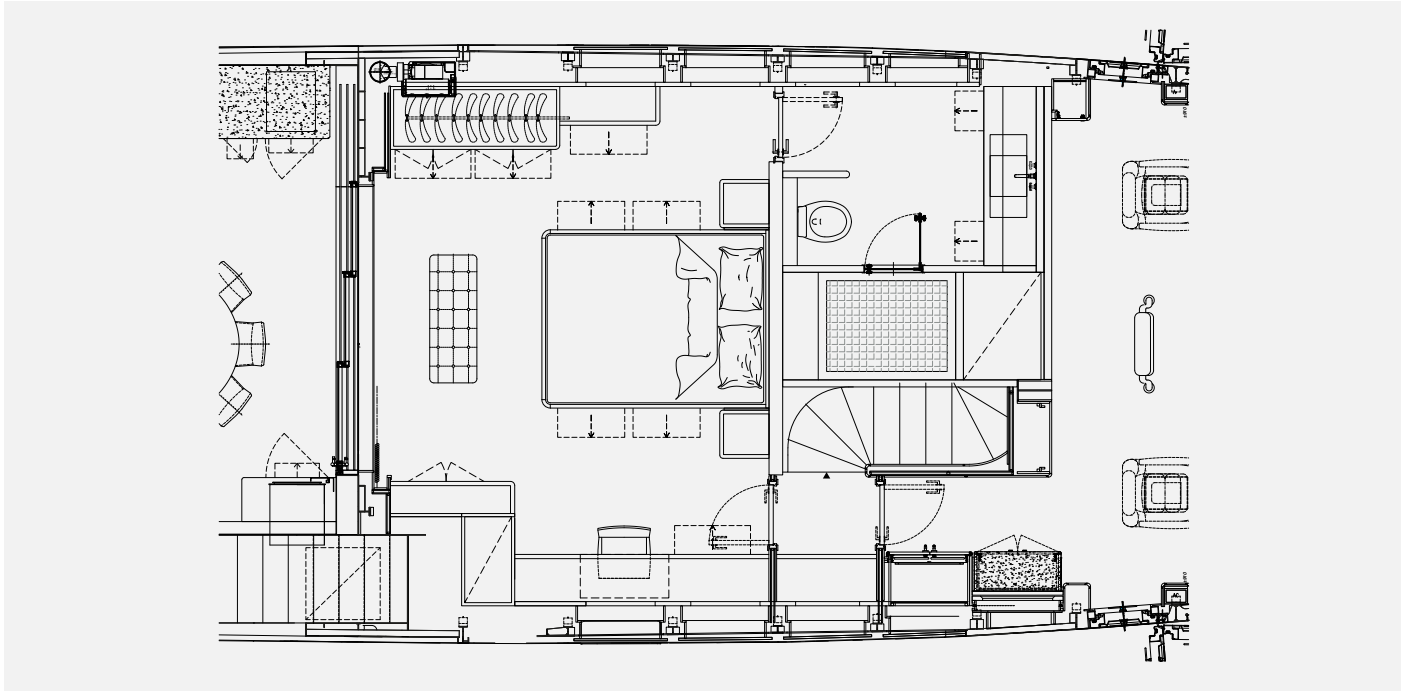
VIP Cabin PTS
12.4 m²
133.4 ft²

Engine Room
33.8 m²
363.8 ft²

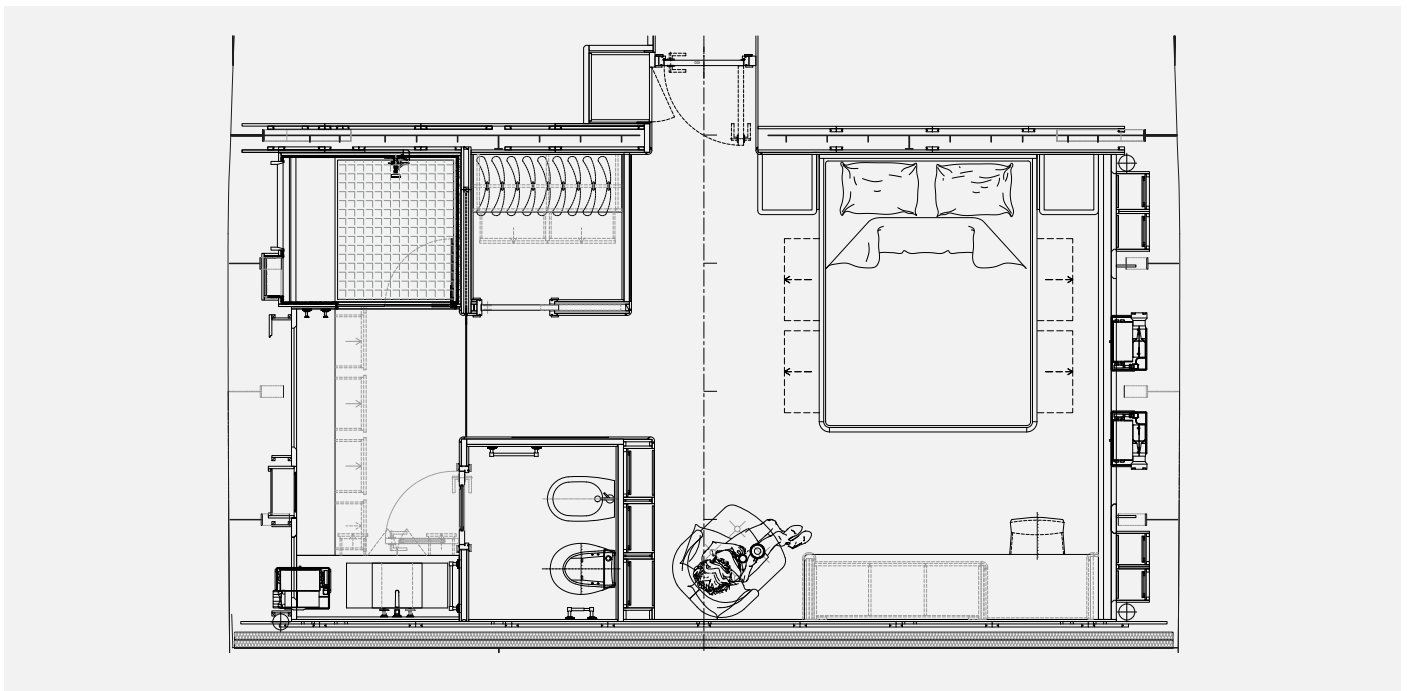
Lazarette
25.8 m²
277.7 ft²

Swimming
Platform
13.3 m²
143 ft²

ARRANGEMENT PLAN REFIT OPTIONS



Refit the Skly Lounge on upper deck to change it into an Owner cabin



Refit the two VIP cabins on lower deck to change them into a full beam Owner cabin or VIP cabin

PHOTO GALLERY EXTERIOR

ACALA













PHOTO GALLERY DECKS

ACALA



Main Deck Cockpit





Upper Deck Cockpit





Upper Deck Foredeck





Sundeck

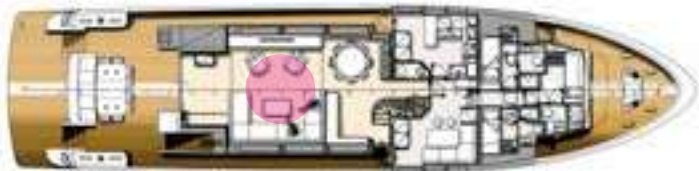


PHOTO GALLERY INTERIORS

ACALA



Main Salon



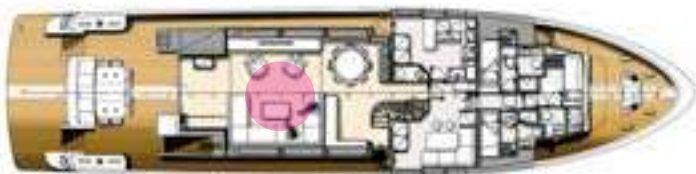


Main Salon





Main Salon





Sky Lounge





Owner Cabin





Owner Cabin





Owner Cabin Bathroom





Vip Cabin Starboard





Vip Cabin Starboard



Vip Cabin Starboard - Bathroom





Vip Cabin Port





Guest Cabin Starboard



Guest Cabin Starboard – Bathroom





Guest Cabin Port



Guest Cabin Port – Bathroom





Wheelhouse





Lazarette - Diving Club





Lazarette - Diving Club





Engine Room





Engine Room



BUILD DETAILS



Details



INTERIOR REFIT PROPOSAL

BEFORE



AFTER



Main salon, view from portside forward

BEFORE



AFTER



Main salon, view from starboard side forward

BEFORE



AFTER



Main salon, view from starboard side aft

BEFORE



AFTER



Main salon lounge area



CANTIERE
DELLE MARCHE

explorer yachting starts here