



CANTIERE
DELLE
MARCHE

beyond yachting experience

 STELLA DEL NORD



DARWIN
CLASS 86'

M/Y Stella del Nord

YACHT INTRODUCTION

M/Y Stella del Nord is the fourth and most recent Darwin Class 86' built by Cantiere delle Marche. She differs from her sisterships for the bigger windows on main deck and upper deck, a feature that contributes to soften her austere profile and allows for more light to shine in her two salons.

The Darwin Class 86' is the cruising evidence of how true to reality is CdM's reputation for sturdy, reliable, seaworthy and low fuel consuming vessels. Her sistership M/Y Percheron has in fact already completed three hassle-free Atlantic crossings (the last one no-stop from Bermuda to Gibraltar). And she has already faced navigation in tough conditions as proved by the video of M/Y Percheron cruising with 57 knots of wind.



Scan the QR code to watch the video of M/Y Percheron cruising with 57 knots of wind



scan the QR code to watch the video of M/Y Stella del Nord and M/Y Percheron at anchor

Registered just under the 200 GrT threshold, she features very subtle and elegant elm wood interiors (2.10 mt high ceilings) and iroko floorings. With a few décor choices and interior design changes, this neutral color palette can be either twisted into a modern and stylish ambience or given a classic and warm tone. The interior department of Cantiere delle Marche is available to counsel and support owners wishing to refit M/Y Stella del Nord with a different layout as well as interior design. The general arrangement features four staterooms on lower deck, including a spacious and comfortable Master cabin right in the most stable area of the vessel. On main deck, a generous and cosy salon with a custom L-shaped couch and a table for 8 complements the guest space.

Continuing forward, there are the signature CdM's crew quarters (2 cabins with ensuite bathrooms), a very spacious galley and a generous crew dinette with a laundry station and extra fridges and freezers. Both galley and dinette have their own access through the side deck for a better crew circulation and guests' privacy.

On the bridge deck, a 6 mt tender can be stored during long passages and will ensure a wet-free shuttle back and forth from villages, marinas and beaches. When towed, its place can be taken by sunbeds and free standing furniture, complementing the design of the cockpit which also features a teak table and a pantry with fridge, freezer and Miele hob. A second outdoor area featuring a large sunbed area is located on the foredeck while a second and more private salon is located just aft of the wheelhouse. The sun deck offers a variety of uses: al fresco dining, BBQ, sunbathing and observation point of the amazing and secluded destinations this vessel can reach. A fourth helm station, after the wheelhouse and the two wing stations, is found on the sun deck too.

Under a technical point of view, M/Y Stella del Nord is equipped with an unrivalled engine room for vessels of this size, overengineered and extraordinarily easy to maintain as per CDM's highest standard. Powered with two Caterpillar 287 kW CAT C12 engines, she reaches a top speed of 11,5 knots and has a humongous range of 6700 nm at 8,5 knots.

YACHT STATUS & PRICE

AVAILABILITY

May 2019

PRICE

€ 6.100.000

VAT STATUS

Paid

YEAR

2015

MAIN ENGINE HOURS

Port	1371
Starboard	1375

DIESEL GENERATORS HOURS

Port	4633.1
Starboard	4738.4
Night generator	1916

CLASS RENEWAL

October 2020

LOCATION

Marina di Pisa
Tuscany (Italy)

TECHNICAL SPECIFICATION

GENERAL FEATURES

Model

Darwin Class 86

Hull Type

Full displacement

Hull Material

Steel

Superstructure Material

Aluminum

Classification

RINA Pleasure Yacht C HULL MACH Y,
unrestricted navigation
In compliance with
EC Directive 2003/44

Flag

Red Ensign

Port of Registry

London

DIMENSIONS

Registered Length

23,99 mt / 78.7 ft

Loa

26,10 mt / 85,63 ft

Beam

7,43 mt / 24.05 ft

Draft

Full load under the keel 2.30 mt / 7.55 ft
Full load under the skeg 2.71 / 8.9 ft

Displacement at full load

195 t

Registered Tonnage

199 GT

SPEED

Maximum

11,5 kn

Cruise

10 kn

Range

6700 nm @ 8,5 knots

ACCOMMODATION

Cabins

4

Guests

10 (8+2 pullman beds)

Crew

4 in 2 cabins

CAPACITIES

Fuel

42.600 lt / 11.250 US gl

Fresh water

3.400 lt / 900 US gl

Black water

1.100 lt / 260 US gl

Grey water

2.100 lt / 550 US gl

Clean oil

420 lt / 110 gl

Dirty oil

420 lt / 110 gl

Bilge

1.000 lt / 260 US gl

MECHANICAL EQUIPMENT

Engines

2 x CAT C12 287 kW B rated
(385 mHP) @ 1800rpm

Water Maker

Idromar MC-3 Duplex,
180 liter-day / 48 US gl-hour

Stabilizers

CMC, electrical (zero speed
and underway)

Bow Thruster

Electric, 37 kW

Stern Thruster

Electric, 26 kW

Black Water Treatment

Selmar 2500 liter per day / 660
1875 US gl-day

Fuel Separator

Alfa Laval MIB 303

Toilet System

Tecma

Boiler

2 x 150 l (40 US Gallons)

Air conditioning

- Condaria for Mediterranean use:
- Winter: Exterior t = 0°C
Interior t = 20°C ±1°C
 - Summer: Exterior t = 32°C (R.M. = 80%)
Interior t = 25°C ±1°C (R.M. = 50%)

ELECTRICAL SYSTEM

Main generators

2 x 53 kW Kohler (55EFOZDJ)

Auxiliary (night) generator

1 x 17.5 kW Kohler (17EFOZD)

Automatic parallel between generators
Frequency converter ready cabling

DECK EQUIPMENT

Docking Capstans

Maxwell VWC 4500

Vertical Windlass

Maxwell VC 4000

Anchor

2 x 180 Kg (2 x 396 pound)

Anchor Chain

2 x 165 mt, diametro 14 mm
(2 x 541 ft, diameter 55 inches)

Gangway

Opacmare 1133/44 : 2,9 mt X 0,6 mt
(9.5 ft x 2 ft)

Crane

Opacmare Electro/Hydraulic
mod. 3080 (1200 Kg max load)

APPLIANCES

Galley

- AEG Induction hob HK874400FB
- Miele hob KM6366-1
- Miele microwave M6262
- Miele fridge KFN 11923
- Miele oven H6890 BP
- Miele cooker hood DA3490
- Miele dishwasher G4212

Dinette

- Miele washing machine W2819i
- Miele tumble dryer T8822C
- Miele fridge KFN 37432
- 2 x Miele Freezer FNS37402iP

Main salon

- Miele Wine Cellar KWT6321 G

Sun deck

- BBQ Weber Genesis
- Miele hob CS1212l
- Fridge Vitrifrigo DW100RFX
- Ice maker Vitrifrigo Hydro P

Upper deck cockpit

- Fridge/frezer Vitrifrigo C90iX
- Ice maker Vitrifrigo Hydro P
- Miele hob CS1212l

Main deck cockpit

- Fridge Vitrifrigo DW100RFX
- Ice maker Vitrifrigo Hydro P

TECHNICAL SPECIFICATION

ENTERTAINMENT SYSTEM

Main salon

- TV LED Samsung Tv (60") UE60H7000 + Lyft
- DVD Bluray player Samsung
- Media Center Bose T510
- Kit speaker Bose
- Decoder SAT Mvision HD270

Owner Cabin

- TV LED Samsung Tv (50") UE50H7000
- DVD Bluray player Samsung
- Media Center Bose T510
- Kit speaker Bose
- Decoder SAT Mvision HD270

Sky Lounge

- TV LED Samsung Tv (60") UE60H7000 + Lyft
- DVD Bluray player Samsung
- Media Center Bose T510
- Kit speaker Bose
- Decoder SAT Mvision HD270
- Sony Play Station
- CD player Yamaha C600
- Apple TV

VIP Cabin STB

- TV LED Samsung Tv (40") UE40H6500
- DVD Bluray player Samsung
- Decoder SAT Mvision HD270

Guest Cabin (x 2)

- TV LED Samsung Tv (22") UE22H4000
- DVD Bluray player Samsung
- Decoder SAT Mvision HD270

Crew mess

- TV LED Samsung Tv (22") UE22H4000
- DVD Bluray player Samsung
- Decoder SAT Mvision HD270

Wheelhouse

- Radio CD/mp3/AM/FM/ipod ready
- 2 x Sonance speaker

Main deck cockpit

- Sonos Connect amplifier
- 2 x marine speaker Sonance XTR 1000

Upper deck cockpit

- Sonos Connect amplifier
- 2 x marine speaker Sonance XTR 1000

Upper deck foredeck

- Sonos Connect amplifier
- 2 x marine speaker Sonance XTR 1000

Sun deck

- Sonos Connect amplifier
- 2 x marine speaker Sonance XTR 1000

Wi-Fi

- Cisco switch 24 ports SLM224PT
- Nr 3 Access points indoor
- Nr 1 Accesso point outdoor

NAVIGATION AND COMMUNICATION EQUIPMENT

- N°4 hatteland monitor 19"
- N°1 radar Furuno FAR2117, 96 nm, 6.5 ft antenna
- N°1 radar Furuno DRS4D, 36 nm
- N°1 GPS Furuno GP-33
- Multi distributor MD-550
- Digital fish finder Furuno DFF1
- 2 x FI-70 remote display
- Furuno satellite comp.sc-50/radome
- Furuno auto pilot navpilot-700-E-2A
- Furuno AIS transponder class B FA50
- Magnetic compass Ritchie SS-5000
- Furuno VHF DSC Class A
- Furuno NAVTEX GMDSS NX-700 B
- Seasafe E100G EPIRB GPS
- Safesea S100 SART (GMDSS) (IMO VERSION)
- Furuno system BNWAS
- Furuno system SSAS INMARSAT MINI-C FUR. FELCOM-19 SSAS
- Thuraya marine kit docking stat. + Antenna
- Sun deck helm station
 - Furuno multifunction display TZT 14
 - Furuno autopilot display 1DFAP-7011-C
 - Furuno VHF DSC Class D INDIPENDENT
 - Ritchie magnetic compass
- FLIR thermal camera mod. M324L

CCTV SYSTEM

- N°2 color external fixed camera (main deck, port and starboard sideways)
- N°2 color remote control camera (engine room, main deck cockpit)
- CCTV monitor in wheelhouse

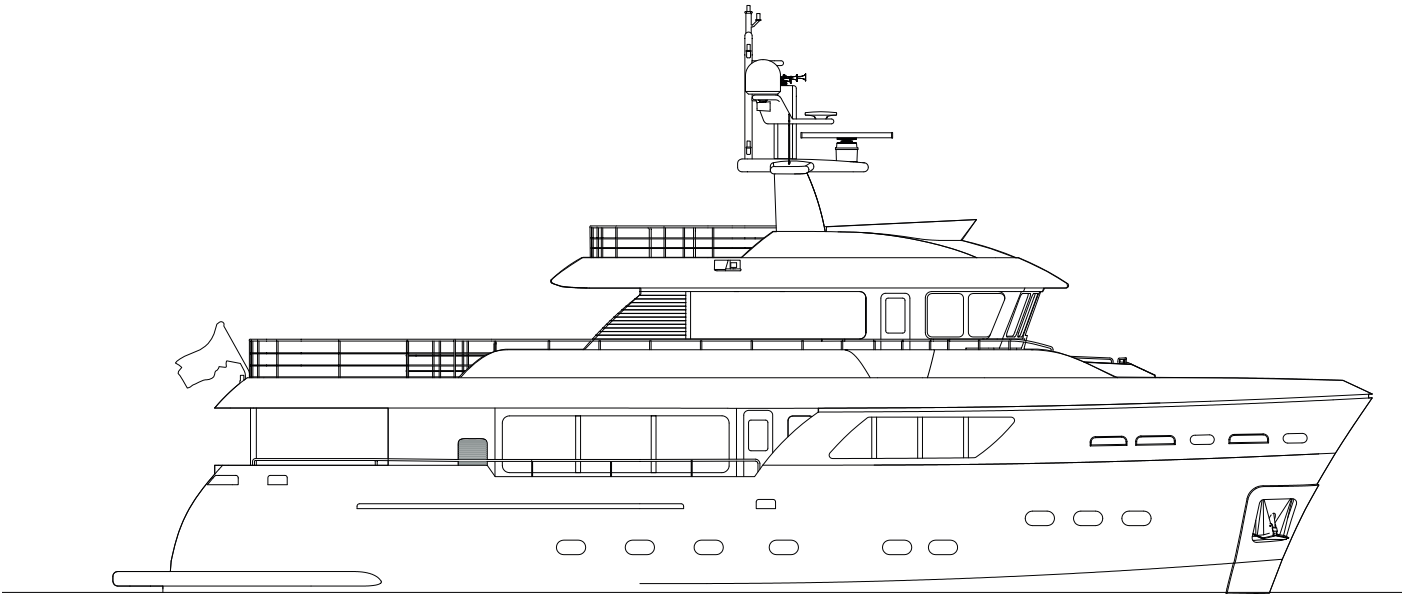
ANTENNAS

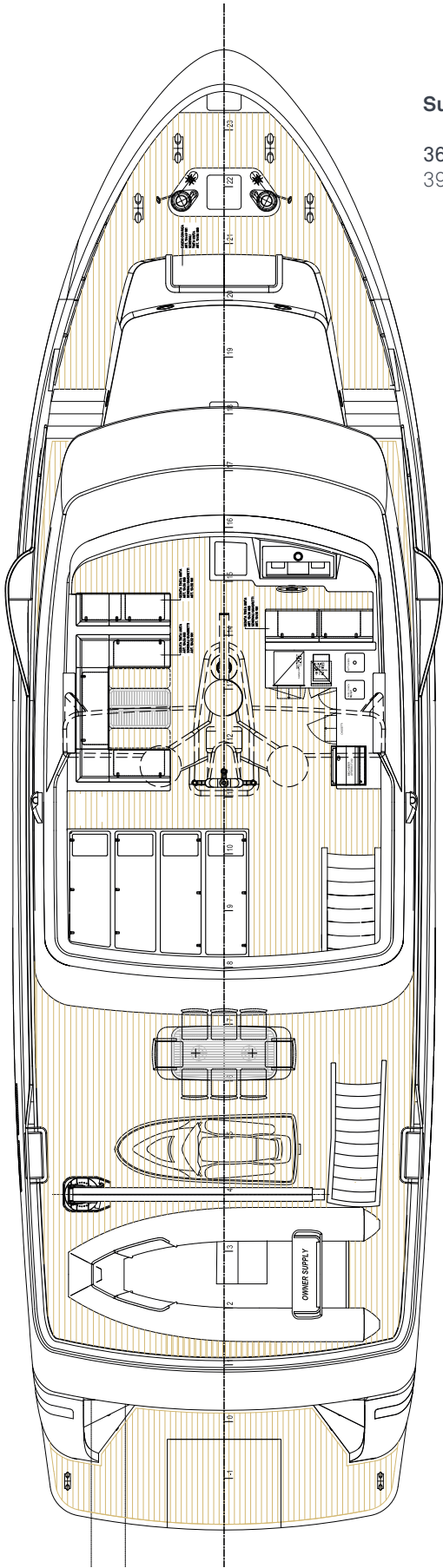
- N°1 Satellite Antenna TVSTAT KVH 60 cm
- V-Sat ready cabling
- GSM antenna
- FM receiver

OTHER

- Transformer Opacmare 1133/44 (5 steps)
- SAF2507 shafts
- Sonihull anti fouling system
- Wind protective awning for main deck (Norvegese)
- Upper deck cockpit bimini
- Sun deck bimini
- Built in shower on roll bar
- Nr 2 electronic pilot chairs

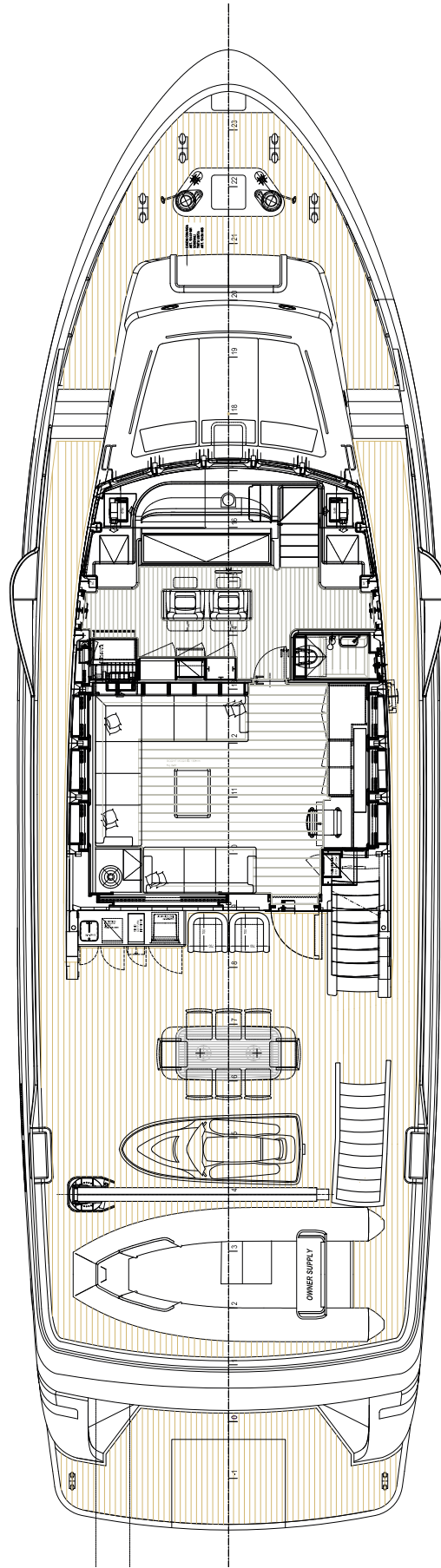
ARRANGEMENT PLAN





Sun Deck

36.9 m²
397.1 ft²



Upper Deck

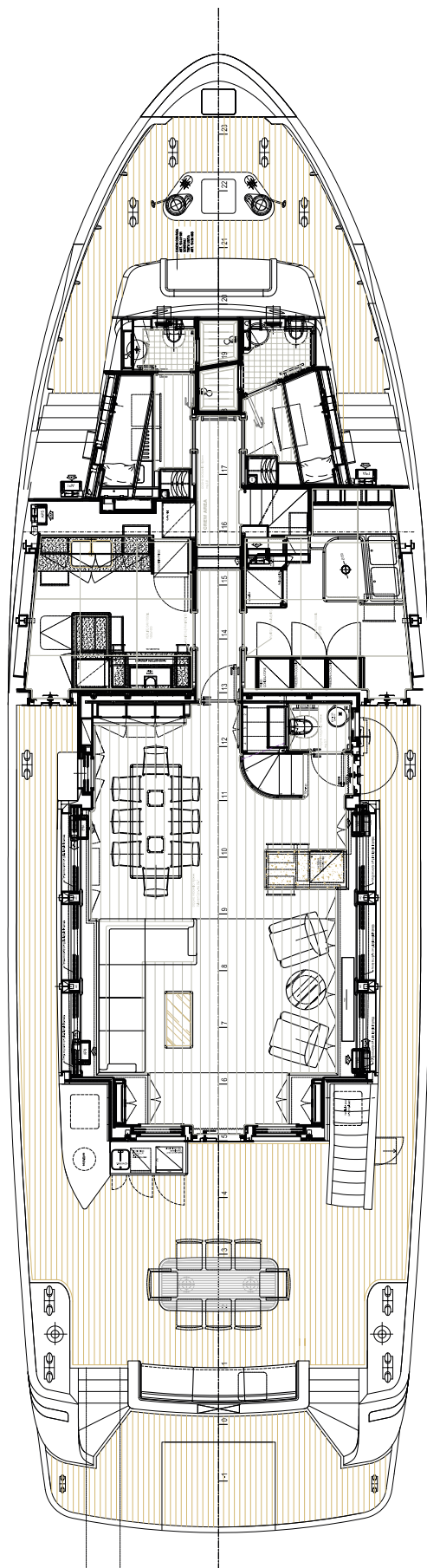
Sunbed
on foredeck
5.7 m²
61.3 ft²

Wheelhouse
16.1 m²
173.2 ft²

Day head
1.1 m²
11.8 ft²

Sky Lounge
18.2 m²
195.9 ft²

Aft Cockpit
47.0 m²
505.9 ft²



Main Deck

Crew Cabin PTS
5.5 m²
59.2 ft²

Crew Cabin STB
4.8 m²
51.6 ft²

Galley
9.6 m²
103.3 ft²

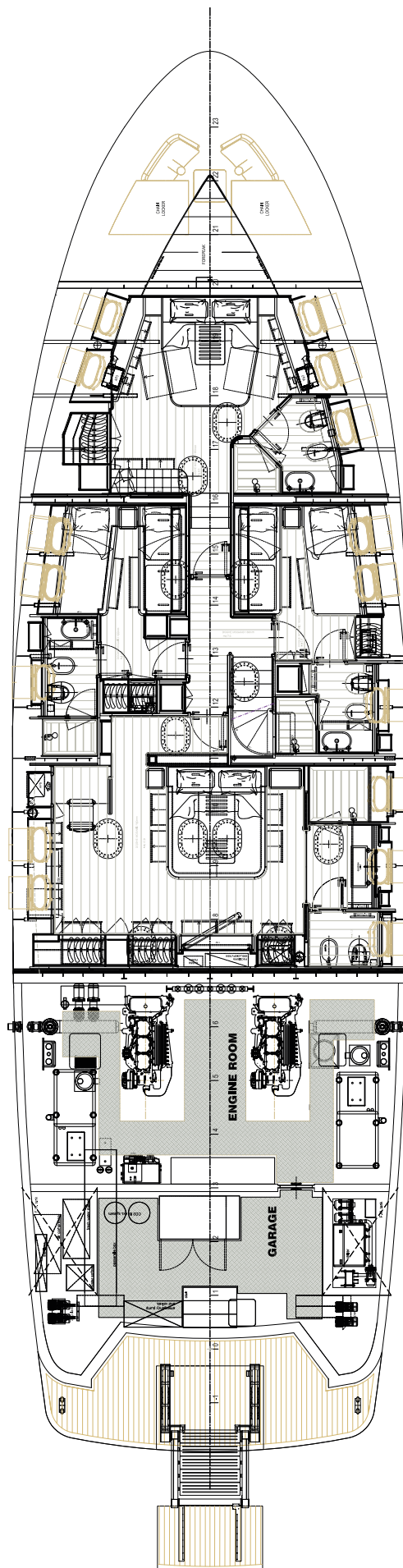
Crew Mess
9.1 m²
97.9 ft²

Main Salon
35.3 m²
379.9 ft²

Day head
0.9 m²
9.68 ft²

Aft Cockpit
23.1 m²
248.6 ft²

Swimming Platform
9.2 m²
99.0 ft²



Lower Deck

VIP Cabin
18.6 m²
200.2 ft²

Guest Cabin PTS
10.9 m²
117.3 ft²

Guest Cabin STB
10.5 m²
113.0 ft²

Owner Cabin
26.9 m²
289.5 ft²

Engine Room
25.7 m²
276.6 ft²

Lazarette
17.8 m²
191.5 ft²

PHOTO GALLERY EXTERIOR

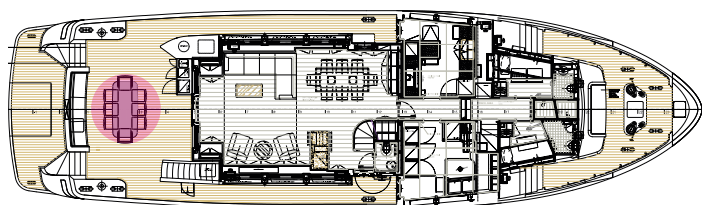




PHOTO GALLERY DECKS

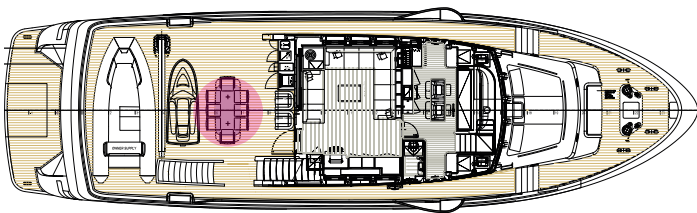


Main Deck Cockpit





Upper Deck Cockpit





Sundeck



Sundeck - Helm Station

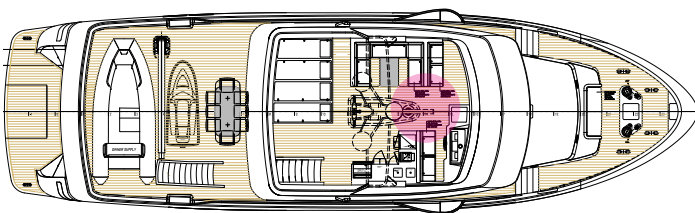
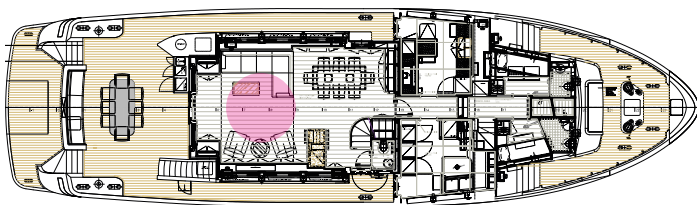


PHOTO GALLERY INTERIORS

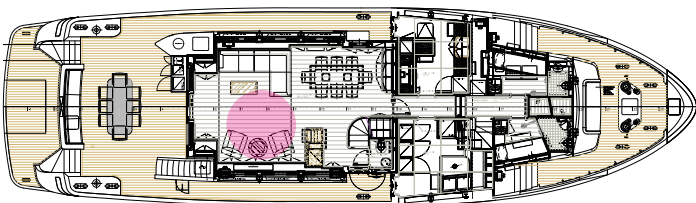


Main Salon



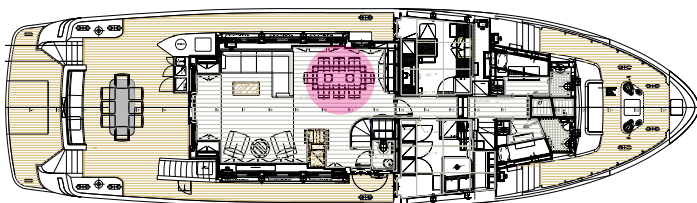


Main Salon



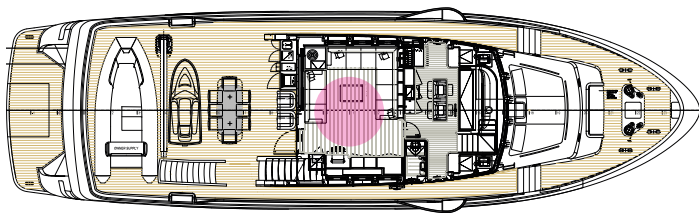


Main Salon



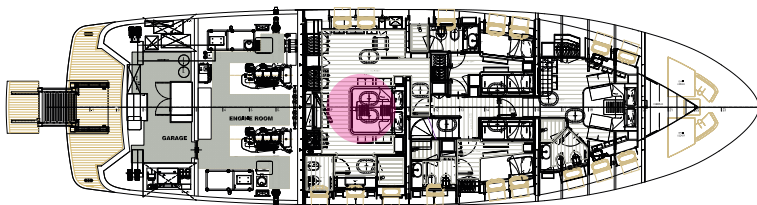


Sky Lounge



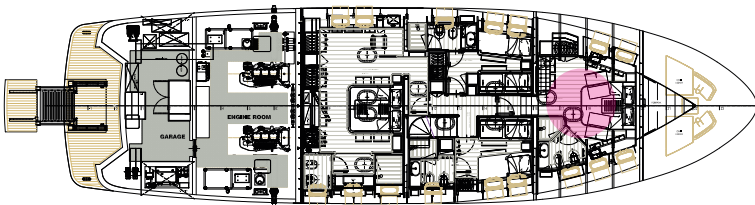


Owner Cabin



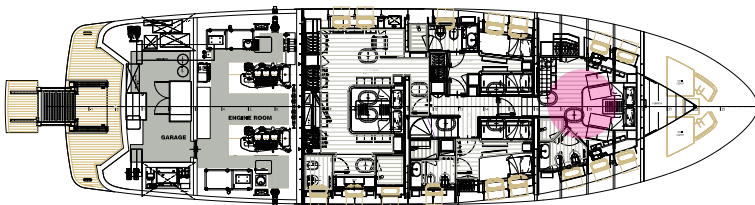


Vip Cabin





Vip Cabin

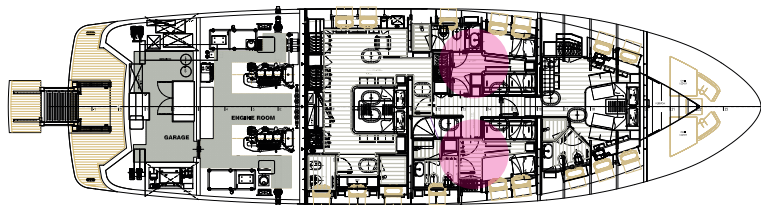




Guest Cabin Starboard

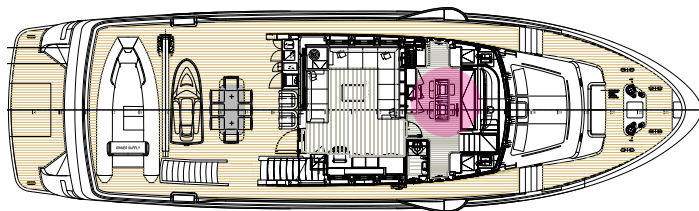


Guest Cabin Port



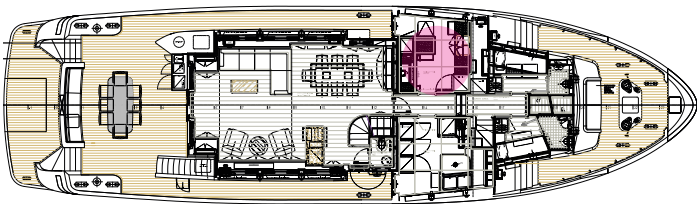


Wheelhouse



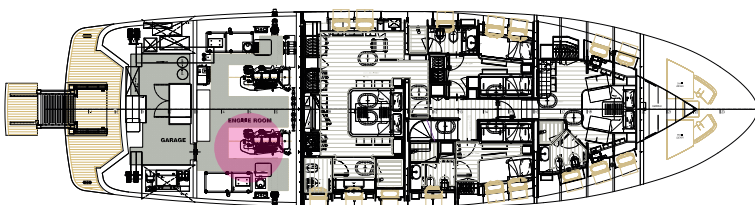


Galley





Engine Room of sistership yacht (M/Y Percheron)





CANTIERE
DELLE
MARCHE

beyond yachting experience