



CANTIERE
DELLE
MARCHE

beyond yachting experience

M/Y

GALEGO

DARWIN CLASS 102'



YACHT **INTRODUCTION**

MY Galego is a 102 ft steel and aluminum Explorer vessel, the third of the fortunate Darwin Class series to hit the water after MY Acala and MY Babbo. Built in compliance with LY3 regulations, she boasts a series of interesting customizations, both with regards to function and design. The already ample spaces were specifically designed and re-proportioned in height, exceeding the already excellent standards of all the Darwin Class Explorer yachts.

The technical standards that have made CdM a benchmark in its sector have been maintained: 12mm steel hull, cupronickel piping, independent rudders, automatic generator parallel (3 generators), electric fins stabilizers, as well as wastewater treatment systems for black, gray, and bilge waters that have been adapted from the world of work ships and designed to be used 24/365. In order to let the owners live an active life while enjoying the oceans and their sailing destinations, careful attention was dedicated to the layout of the garage, designed to hold numerous toys and transportation vehicles, as well as a complete diving center.

The sundeck was custom designed for both a lounge area – with a big sofa with up/down tables, a bar in the center full optional equipped for cooking and cocktails – and for the wellness: a fully-equipped open-air fitness area with a pool so to keep up with their daily workout routines, even when the owners are at sea and far away from their regular gym.

M/Y Galego 's interior design style is warm and welcoming. The walnut wood tones find their perfect complement in the Poltrona Frau leather that covers 90% of the walls in all the yacht. The theme is pairing classical style and modern touches, especially in accessories and free standing pieces of furniture, like Minotti and Baxter pieces, that offer a tremendous visual impact in terms of aesthetics. The briefing for the kitchen was to emphasise the light from the large windows, so the choice has been the use of white with stainless steel for all accessories and appliances, included a blast-chiller freezer, a water dispenser and a double wash area.

The yacht hosts a total of four cabins for the guests (Master, one VIP, and two guest cabins) plus two crew cabins and one Captain's double cabin adjacent to the cockpit. For an higher level of service to Owners and guests, the laundry cabin in the crew area could be easily refitted into a third crew cabin.

TECHNICAL **SPECIFICATION**

While it still maintains a strong “mariner” feel that is typical of working boats, the Darwin Class continually strives to improve the size and layout of the interior spaces so as to reach the perfect blending point between the technical-structural features and the balance of volume and lines.

YACHT INFO	MAIN CHARACTERISTICS	CAPACITIES
BUILDER Cantiere delle Marche	TYPE DARWIN CLASS 102' – Full displacement	FUEL 40'000 lt / 10'600 US gl
BUILT 2017	FLAG Malta	FRESH WATER 6'000 lt / 1'585 US gl
PRICE € 8'900'000,00 VAT PAID	CLASSIFICATION Registered pleasure. Built in compliance with commercial LY3 code	BLACK WATER 1'100 lt / 290 US gl
LOCATION Porto Romano, Fiumicino (Roma), Italy	HULL MATERIAL Steel	GREY WATER 2'100 lt / 550 US gl
DIMENSIONS	SUPERSTRUCTURE MATERIAL Aluminum	DIRTY OIL 300 lt / 80 gl
LOA 31 mt / 102 ft	ACCOMMODATION	BILGE 1'100 lt / 290 US gl
LWL 28 mt / 92 ft	GUEST CABINS 4	SPEEDS
BEAM 7,43 mt / 24,4 ft	GUESTS 10	MAXIMUM 13 knots
DRAFT (FULL LOAD UNDER THE KEEL) 2,45 mt / 8,03 ft	CREW 6 (incl Captain) / 3 cabins	CRUISING 11 knots
DISPLACEMENT AT FULL LOAD 240 t / 236 long ton		RANGE 4500 nm @ 10 Kn
REGISTERED TONNAGE 246 GT		

NAVIGATIONAL INSTRUMENTS

Nr 4 hatteland display 19" mmd
 Furuno main radar arpa FAR-2117 BB - 12 kw - imo version
 Furuno Navnet 3D Black Box
 Antenna radar open array 12 kw
 Nr 2 GPS Furuno GP-33
 Dgital fish finder furuno DFF1
 Airmar additional depth transducer
 Nr 4 FI-70 remote display
 Furuno satellite compass SC-50
 Gyrocompass system Navigat 100
 Furuno AIS class a FA-170 transponder - imo approved
 Furuno Navtex GMDSS NX-700 B
 Furuno display data repeter & Navnet TZT9 for captain cabin
 Furuno display data repeter & navnet TZT9 for crew mess area
 Navigation pc and Maxsea ECS navigation sw
 Raytheon/anshutz autopilot nautopilot NP60
 C-plath magnetic compass - imo approved
 Ocean signal epirb (gmdss) (imo version)
 Radiotelephone VHF Furuno FM-8900s GMDSS class A
 FM4721 marine VHF radiotelephone
 Sailor Inmarsat standard c mod. 6110 GMDSS
 Flir T400 thermal and low camera

MECHANICAL EQUIPMENT

ENGINES
 2 x Caterpillar C18 ACERT (500kW @1800-2100rpm) B RATING, 500 hours

WATER MAKER
 Idromar MC-3 Duplex 360 lt/h

ELECTRICAL BOILER
 1x 150 lt, 1 x 300 lt

AIR CONDITIONING
 Condaria, Tropical use, 286.000 BTU/h

STABILISERS
 CMC, electrical zero speed

BOW THRUSTER
 Electrical, 52 kW

STERN THRUSTER
 Electrical, 30 kW

FUEL SEPARATOR
 Westfalia

WATER TREATMENT
 Mini-Biocon

TOILET SYSTEM
 Tecma

DECK EQUIPMENT

2 x VRC6000 Muir vertical windlass
 2 x VC4000 Docking capstans
 2 x Anchor 225 Kg
 2 x 137,5 mt anchor chains, 16 mm
 Stern gangway Bitecnomare Magnum Due
 Stainless steel bollards and chocks
 Crane Sanguinetti Chiavari 2000 Kg

LAUNDRY

LAUNDRY CABIN
 Washing machine Miele WMH121,
 Tumble dryer Miele T8822 C

LAZARETTE
 Washing machine Miele WMH121,
 Tumble dryer Miele T8822 C

AUDIO AND VISUAL EQUIPMENT

MAIN SALON
 TV LED Samsung 55" POP UP,
 Sintoampli Denon, DVD Blueraay Denon,
 Apple TV, Control panel Russound, Bose
 891 speakers, PSB Active subwoofer,
 Dock station per I PAD mini, I PAD mini
 with Bitwise Entertainment system

SKYLOUNGE
 TV LED Samsung 55" POP UP,
 Sintoampli Denon, DVD Blueraay Denon,
 Apple TV, Control panel Russound, Bose
 891 speakers, PSB Active subwoofer,
 Dock station per I PAD mini, I PAD mini
 with Bitwise Entertainment system

OWNER CABIN
 TV LED Samsung 55" Mirror, Apple TV,
 Control panel Russound, Bose system
 with subwoofer, Dock station per I PAD
 mini, I PAD mini with Bitwise
 Entertainment system

VIP CABIN
 TV LED Samsung 43", Apple TV, Control
 panel Russound, Nr 2 Speaker Bose

GUEST CABIN (EACH)
 TV LED Samsung 28", Apple TV, Control
 panel Russound, Nr 2 Speaker Bose

CAPTAIN CABIN
 TV Samsung 24", Nr 2 Speaker Bose,
 Stereo Sonos connect AMP

CREW MESS
 TV LED Samsung 22", Apple TV, Control
 panel Russound, Nr 2 Speaker Bose

GALLEY
 Stereo Sonos connect AMP, Nr 2
 Speaker Bose

CREW CABIN SX
 Stereo Sonos connect AMP, Nr 2
 Speaker Sonos

CREW CABIN FW
 Stereo Sonos connect AMP, Nr 2
 Speaker Sonos

WHEELHOUSE
 Bose soundlink, Main deck cockpit,
 Sonos connect, Nr 2 Sonance marine
 speakers, Bose subwoofer

UPPER DECK COCKPIT
 Sonos connect, Nr 2 Sonance marine
 speakers, Bose subwoofer,

SUNDECK
 Sonos connect, Nr 2 Sonance marine
 speakers

FOREDECK
 Sonos connect, Nr 2 Sonance marine
 speakers

TELEPHONE AND COMMUNICATION SYSTEM

ANTENNAS

Tracphone V7IP in dome HD11 KTP-V7IPR-3X-11, Tracvision antenna HD KTV-HD11

WI-FI SYSTEM

SLM224PT Switch 24 Port (12 POE/ 12 Standard), Nr 5 WAP121N access point Cisco 3, Nr 2 WAP321 access point Cisco 3

TELEPHONE

Telephone system Panasonic, KX-NCP500NE main unit Panasonic, Nr 9 telephone Jacob Jensen T1 ,Dial 106 GSM 4band gateway

ELECTRICAL SYSTEM

MAIN GENERATORS

2 x 55 kW Kohler, 1100 hours

EMERGENCY/NIGHT GENERATOR

1 x 19 kW Kohler, 630 hours

Automated parallel system

Frequency converter ASEA 45 kVa

CCTV SYSTEM

CCTV system controller

2 x analog camera (rotating, engine room and main deck cockpit)

2 x analog camera (fixed, sidewalk passages)

Touch screen VKD0810T DVR

Touchscreen crewmess monitor HD 17"

COOKING APPLIANCES

SUN DECK

Icemaker Barline B3515, Fridge Isotherm drawer box DR 105 L, Induction hob Miele CS 1212-1L

UPPER DECK

Barbecue grill 27 built-in Lynx 0-0C27PSR, Icemaker Barline B3515, Fridge Isotherm drawer box DR 105 L

MAIN DECK

Fridge Isotherm drawer box DR 105 L, Freezer Isotherm cruise 90

MAIN SALON

FRIDGE ISOTHERM CRUISE 130 ELEGANCE, Icemaker Isotherm ice drink clear, Wine cellar Sub Zero ICBIW-24

GALLEY

Induction hob Miele KM 6381, Dishwasher Miele PG 8056, Fridge/freezer Miele KFN 37432 iD, Fridge Miele K 37473 iD, Hood Miele DA 3496, Microwawe Miele OVEN M 6032, Oven Miele H 6890 BP, Garbage disposal Insink erator ISE 56 – 19720, Blast chiller Irinox freddy, Water dispenser Irinox wave

OWNER CABIN

Vitrifrigo C39i

VIP CABIN

Vitrifrigo C39i

COFFERDAM

Freezer Frigonautica C130C

OTHER

Transformer Opacmare 4 steps 33840 plus pop out

Upper deck and Sun Deck bimini with stainless steel poles

Fourth helm station on main deck cockpit

Railing on main deck overhang to mount custom awning, allowing full enclosure and air conditioning of main deck cockpit

Air-conditioned cofferdam

Plug-in rain shower on swimming platform

Rain shower on sun deck roll bar

Marquipt ladder for side embarkation

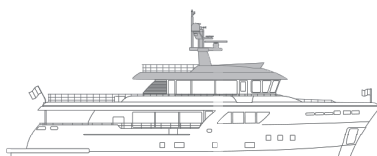
Bauer Junior 2 compressor

Cooled storage for trash

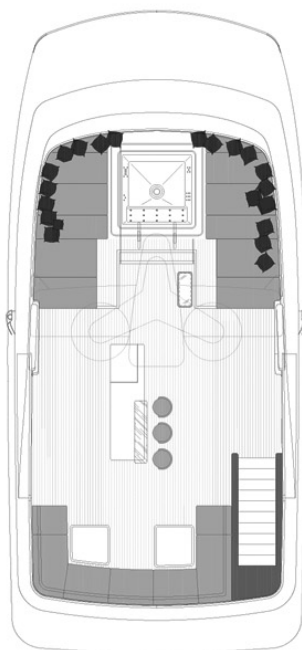
Video intercom Panasonic

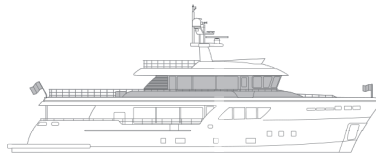
ARRANGEMENT **PLAN**

We wanted a new yacht able to represent the best of our experience, developed during decades of design and construction of boats and yachts. The organization of spaces and life onboard, linked to the soundness and the technical solutions typical of commercial navigation, enriched with megayacht finishes.

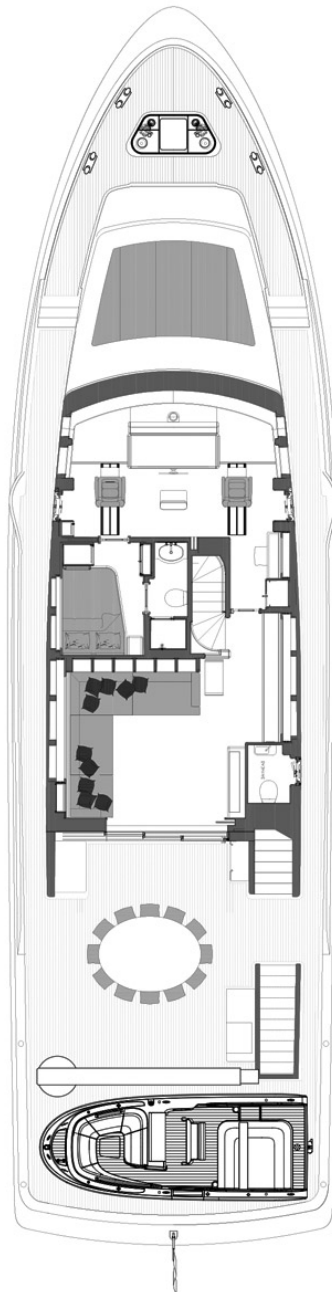


SUN DECK

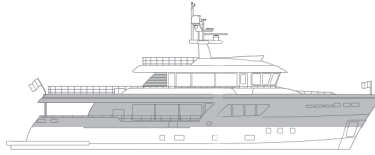




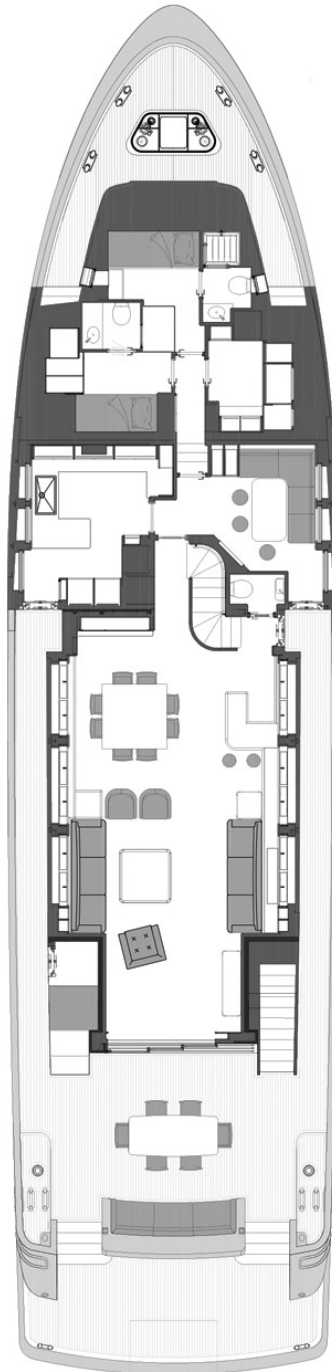
UPPER DECK



Cockpit	51,9 m ²
Sky lounge	20,3 m ²
Wheelhouse	18,1 m ²
Captain Cabin	8 m ²
Foredeck	18,3 m ²



MAIN DECK



COCKPIT	27,5 m ²
MAIN SALON	47,9 m ²
GALLEY AND CREW AREA	42,6 m ²



LOWER DECK



OWNER CABIN	28,1 m ²
VIP CABIN	24,3 m ²
GUEST CABIN PTS	11,6 m ²
GUEST CABIN STB	10,7 m ²

VIDEO

MY Galego sturdiness, cruising comfort and seaworthiness is second to none.
Check the video of her sistership MY Babbo at her ease in rough sea and 50 knots wind.



*Scan the QR CODE
to see the video*

PHOTO **GALLERY**



Scan the QR CODE
to see photo gallery



