



CANTIERE
DELLE MARCHE

explorer yachting starts here

BABBO



DARWIN
CLASS 102'
M/Y Babbo

YACHT INTRODUCTION

M/Y Babbo is a 102 ft steel and aluminum Explorer vessel, part of the fortunate Darwin Class series that counts nowadays 12 units already sold. Her beam of 7,43 mt (24 feet) and displacement hull account for the humongous volume of 246 GT, much more than vessels of similar size.



Scan the QR code to watch
the promo video of M/Y Babbo

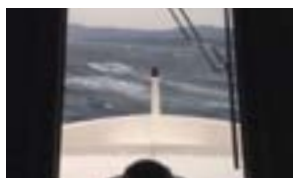
Five guest cabins are located on lower deck, with the Owner cabin forward, two VIP cabins aft and two guests amidships. In here, two bunk beds take the total number of guests aboard to 12. This arrangement can be easily refitted as shown at page 9 of this brochure: a 26,6 sq m (286 sq ft) Owner cabin can replace the sky lounge and captain cabin on upper deck, thus bringing the number of guest cabin to six. At the same time (or alternatively) a 24,8 sq m (267 sq ft) full beam VIP cabin (or second Owner cabin) can be made out of the two VIP cabins on lower deck.

On main deck, a generous and cosy salon with two facing Poltrona Frau sofas and a Bauline table with Dedon chairs complements the guest space. Continuing forward, there are the signature CdM's crew quarters (3 cabins with ensuite bathrooms), a very spacious galley with a stainless steel finish and a generous crew dinette with a laundry station and extra fridges and freezers. Both galley and dinette have their own access through the side deck for a better crew circulation and guests' privacy. On the bridge deck, a 6 mt tender can be stored during long passages and will ensure a wet-free shuttle back and forth from villages, marinas and beaches. When towed, its place can be taken by sunbeds and free standing furniture, complementing the design of the cockpit which also features a round teak table for 12 people seated on Dedon chairs. A second outdoor space with a large sunbed area is located on the foredeck while a second and more private salon is found just aft of the captain cabin. In here a Baxter sofa faces a 55" TV making it for the best spot to relax and enjoy the time with guests. On the sun deck, a central bar with stools liaises the aft dining area with the forward pool and sunbeds area. On lower deck, aft of the engine room a diving center with dedicated cabinets and lockers can be easily converted into a precious storage area in case the new Owner isn't a keen diver. It also hosts the second set of washing machine and tumble dryer.

The interiors are designed by the Archistar Simon Hamui, whose use of leather details, top-brand free standing furniture and elegant accessories such as waterworks faucets gives an elegant allure to the design of the boat.

The technical standards that have made CdM a benchmark in its sector have been maintained: 12mm steel hull, cupronickel piping, independent rudders, automatic generator parallel, electric fins stabilizers, as well as wastewater treatment systems for black, gray, and bilge waters that have been adapted from the world of work ships and designed to be used 24/365.

M/Y Babbo is powered with two 500 kW CAT C-18 engines, guaranteeing a top speed of 13 knots and a range of 4.500 nm at 10 knots of speed. Hew sturdiness and seaworthiness is proved by the following video of M/Y Babbo cruising with 50 knots of wind:



Scan the QR code to watch the
video of M/Y Babbo in rough sea

YACHT STATUS & PRICE

PRICE

€ 8.000.000

VAT STATUS

Not Paid

YEAR

2016

CLASSIFICATION

Ych – Short Range

NUMBER OF GUEST CABINS

5 (12 guests)

MAIN ENGINES HOURS

Port 2050

Starboard 2050

DIESEL GENERATORS HOURS

Port 4150

Starboard 4150

LOCATION

East Mediterranean sea



TECHNICAL SPECIFICATION

GENERAL FEATURES

Model

Darwin Class 102

Hull Type

Full displacement

Hull Material

Steel

Superstructure Material

Aluminum

Classification

Ych - Short range

Flag

Cayman Islands

Port of Registry

Bloody Bay

DIMENSIONS

LOA

31 mt / 102 ft

LWL

28 mt / 92 ft

Beam

7.43 mt / 24.3 ft

Draught

Full load under the keel 2.45 mt / 8.84 ft

Full load under the skeg 2.86 / 9.38 ft

Displacement at full load

240 t / 264 US ton

Gross Tonnage

246 GT

SPEED

Maximum

13 kn

Cruise

10 kn

Range @ cruise speed

4500 nm

ACCOMMODATION

Cabins

5

Guests

12

Crew

7 in 4 cabins

CAPACITIES

Fuel

40.000 lt / 10 600 US gl

Fresh water

6.000 lt / 1 585 US gl

Black water

1.100 lt / 290 US gl

Grey water

2.100 lt / 550 US gl

Dirty oil

300 lt / 80 gl

Bilge

1.100 lt / 290 US gl

MECHANICAL EQUIPMENT

Engines

CaterpillarR C18 ACERT 2x 500kW
(680 CV) @ 1800 RPM

Water Maker

Idromar, 7200l/day

Stabilizers

CMC, electrical
(zero speed and underway)

Bow Thruster

Electric, 52 kW

Black Water Treatment

Selmar

Fuel Separator

Alfa Laval

Toilet System

Tecma

Boiler

1 x 300 l (1 x 80 US Gallons)

Air conditioning

Condaria for Mediterranean use:

- Winter: Exterior t = 0°C
Interior t = 20°C ±1°C
- Summer: Exterior t= 38°C (R.M.= 70%)
Interior t= 22°C ±1°C (R.M.= 55%)

ELECTRICAL SYSTEM

Main Generators

2 x 70 kW Kohler
Automatic parallel between generators

Shore power converter

ASEA 45 kVA and ASEA 36 kVA

DECK EQUIPMENT

Docking Capstans

MIUR VC 4000

Vertical Windlass

MIUR VRC 6000

Anchor

2 x 225 Kg (2 x 496 pound)

Anchor Chain

2 x 137.5 mt, diametro 16 mm
(2 x 451 ft, diameter 0,63 inches)

Gangway

Electro-hydraulic Bitecnomare
"Magnum due" : 5,3 mt X 0,6 mt
(17.4 ft x 2 ft)

Crane

Sanguinetti (2000 Kg max load)

APPLIANCES

Galley

- Miele Induction hob KM 6366-1
- Miele dishwasher speed plus PG8056
- Nr 2 Miele fridges K 14820 SD ED/CS
- Isotherm freezer Cruise 90
- Miele hood DA 3490
- Nr 2 MKN Combi oven Junior
- Miele oven Combi H 6800 BM

Dinette

- Miele Microwave 6032
- Miele fridges K 14820 SD ED/CS
- Miele Freezer FN12827
- Miele washing machine W 5820
- Miele tumble dryer T8822

Lazarette

- Miele washing machine W 5820
- Miele tumble dryer T8822
- 2 x Miele freezer FN 12827 S edt/clst
- Barline icemaker B3515 WS

Cofferdam

Miele wine cellar KWT 6321 G

Lobby lower deck

- Vitrifrigo fridge C50
- Verismo coffee machine 600 Brewer

Sun deck

- LYNX gas bbq Grills 27
- Isotherm fridge drawer box DR 105
- Barline ice maker B3515 AS

Upper deck cockpit

- Isotherm fridge drawer box DR 105
- Barline ice maker B3515 AS

Main deck cockpit

- Isotherm fridge drawer box DR 105
- Isotherm freezer CRUISE 90

TECHNICAL SPECIFICATION

ENTERTAINMENT SYSTEM

Main salon

- TV LED Samsung Tv (55") + TV lift
- Denon amplifier
- I Pad Mini and dock station
- Panasonic projector full HD and motorized screen
- Nr 7 B&W speakers
- Nr 2 Subwoofers
- Telephone Jacob Jensen

Owner Cabin

- TV LED Samsung Tv (48")
- Denon amplifier
- 2 x Bose speakers
- Telephone Jacob Jensen

Sky lounge

- TV LED Samsung Tv (55") + TV lift
- Denon amplifier
- Apple TV media player
- I Pad Mini and dock station
- Nr 5 B&W speakers
- Nr 1 Subwoofers
- Telephone Jacob Jensen

VIP Cabin STB

- TV LED Samsung Tv (40")
- Denon amplifier
- 2 x Bose speakers
- Telephone Jacob Jensen

VIP Cabin PTS

- TV LED Samsung Tv (40")
- TV LED Samsung Tv (40")
- Denon amplifier
- 2 x Bose speakers
- Telephone Jacob Jensen

Guest Cabin PTS

- TV LED Samsung Tv (40")
- Denon amplifier
- 2 x Bose speakers
- Telephone Jacob Jensen

Guest Cabin STB

- TV LED Samsung Tv (22")
- Denon amplifier
- 2 x Bose speakers
- Telephone Jacob Jensen

Dinette

- TV LED Samsung Tv (22")
- Denon amplifier
- 2 x Bose speakers
- Telephone Jacob Jensen

Captain Cabin

- TV LED Samsung Tv (22")
- Denon amplifier
- 2 x Bose speakers

Wheelhouse

- Soundlink Bose
- Panasonic telephone with display

Galley

- Bose soundlink Bluetooth

Lazarette

- Sonos Connect amplifier
- 2 x JL speakers

Crew Cabins

- Alpine radio
- 2 x Sonance speakers

Main deck cockpit

- TV LED Samsung Tv (50") with pop down system
- Sonos Connect media player
- 2 x JL speakers
- JL subwoofer

Upper deck cockpit

- Sonos connect media player
- 2 x JL speakers
- JL Subwoofer

Upper deck foredeck

- Sonos connect media player
- 2 x JL speakers

Sun deck

- Sonos connect media player
- 2 x JL speakers
- 2 x JL Subwoofer
- I Pad Mini

Wi-Fi

- Cisco switch 24 port
- Nr 6 Access points

NAVIGATION AND COMMUNICATION EQUIPMENT

- Nr°4 Furuno monitor 19"
- Radar Furuno FAR2137S, radiator 10 ft, range 96 nm
- Radar Furuno MFDBB-001, radiator 4 ft, range 64 nm
- Chart plotter system – Navnet 3D BB
- Navigation PC and Nobeltech navigation SW
- Nr 2 GPS Furuno GP-33
- Furuno digital fish finder DFF1
- Nr°4 Furuno data repeater FI-70
- Furuno wind sensor FI-5001
- Airmar aft depth additional transducer
- Furuno satellite compass SC-50
- Raytheon/Anshutz gyrocompass standard 22
- Raytheon/Anshutz autopilot nautopilot NP60
- Furuno remote display RD33
- Furuno AIS FA-150
- Furuno Navtex GMDSS NX-700B
- Furuno MFD touch screen (data repeater for dinette)
- Furuno main VHF DSC Class A (FM-8900S)

NAVIGATION AND COMMUNICATION EQUIPMENT

- Furuno secondary VHF DSC Class D (FM-4721)
- Furuno SSB DSC class A (FS1575)
- Ocean signal EPIRB Seasafe E100G
- Ocean signal sart radar transponder Seasafe S100
- Nr 2 ocean signal VHF Seasafe V100
- BNWAS system bridge navigation watch alarm system
- Khalemborg automation panel

CCTV SYSTEM

- CCTV camera on engine room, main deck cockpit and both main deck walkways
- CCTV monitor in wheelhouse

ANTENNAS

- Intellian VSAT V80G, 83 cm (radome 113 cm)
- Intellian TV SAT S80HD, 83 cm (radome 113 cm)
- GSM antenna
- FM receiver

TENDER

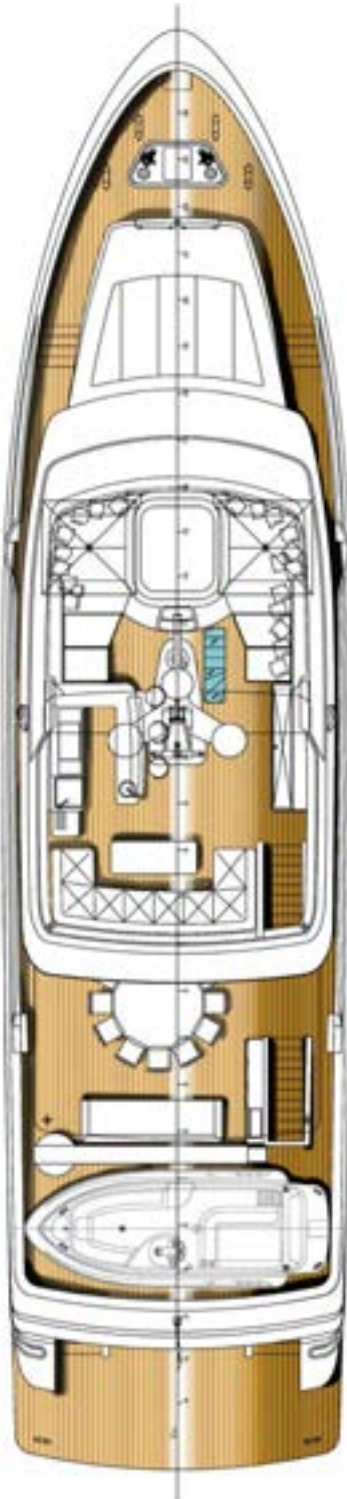
- Williams Jet tender 625



OTHER

- Movable swimming platform Opacmare 338340, 4 steps / 980 Kg
- Nr 20 underwater lights
- Steam machine (hamman) in owner cabin
- Nr 4 wind stopper doors
- Wind protective awning for main deck (Norvegese), air conditioned main deck cockpit
- Plug-in shower on swimming platform
- Built in shower on roll bar
- Upper deck and sun deck awnings

AS IS ARRANGEMENT PLAN



Sun Deck

57 m²
613.5 ft²



Upper Deck

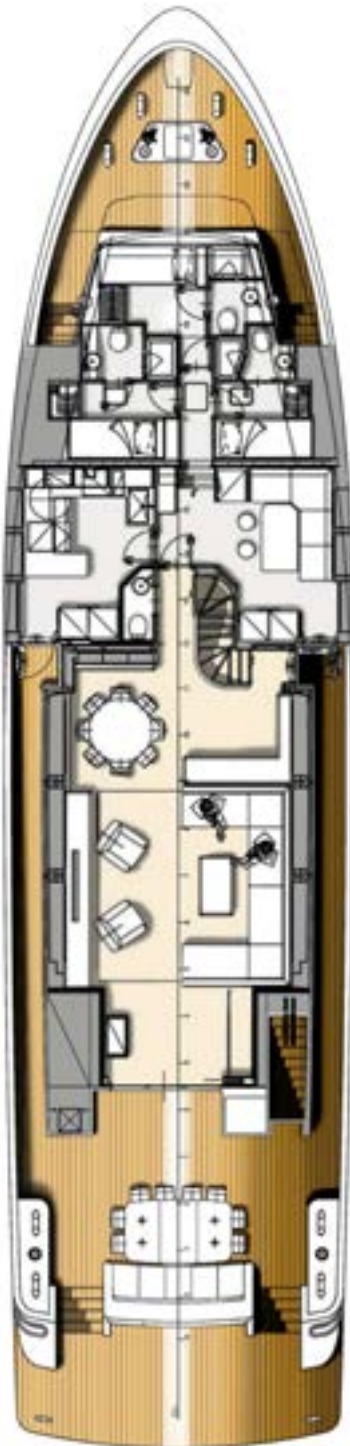
Forward sunbed area
13.7 m²
147 ft²

Wheelhouse
15.3 m²
164.6 ft²

Captain Cabin
7.7 m²
82.8 ft²

Sky Lounge
18.9 m²
203.4 ft²

Aft Cockpit
51.8 m²
557.5 ft²



Main Deck

Crew area
22.3 m²
240 ft²

Dinette
10.7 m²
115 ft²

Galley
8.5 m²
91.4 ft²

Main Salon
44.4 m²
477.9 ft²

Aft Cockpit
24.1 m²
259.4 ft²



Lower Deck

Owner Cabin
23.2 m²
249.7 ft²

Guest Cabin
STB
12.4 m²
133.4 ft²

Guest Cabin
PTS
13.6 m²
146.3 ft²

VIP Cabin STB
12.4 m²
133.4 ft²

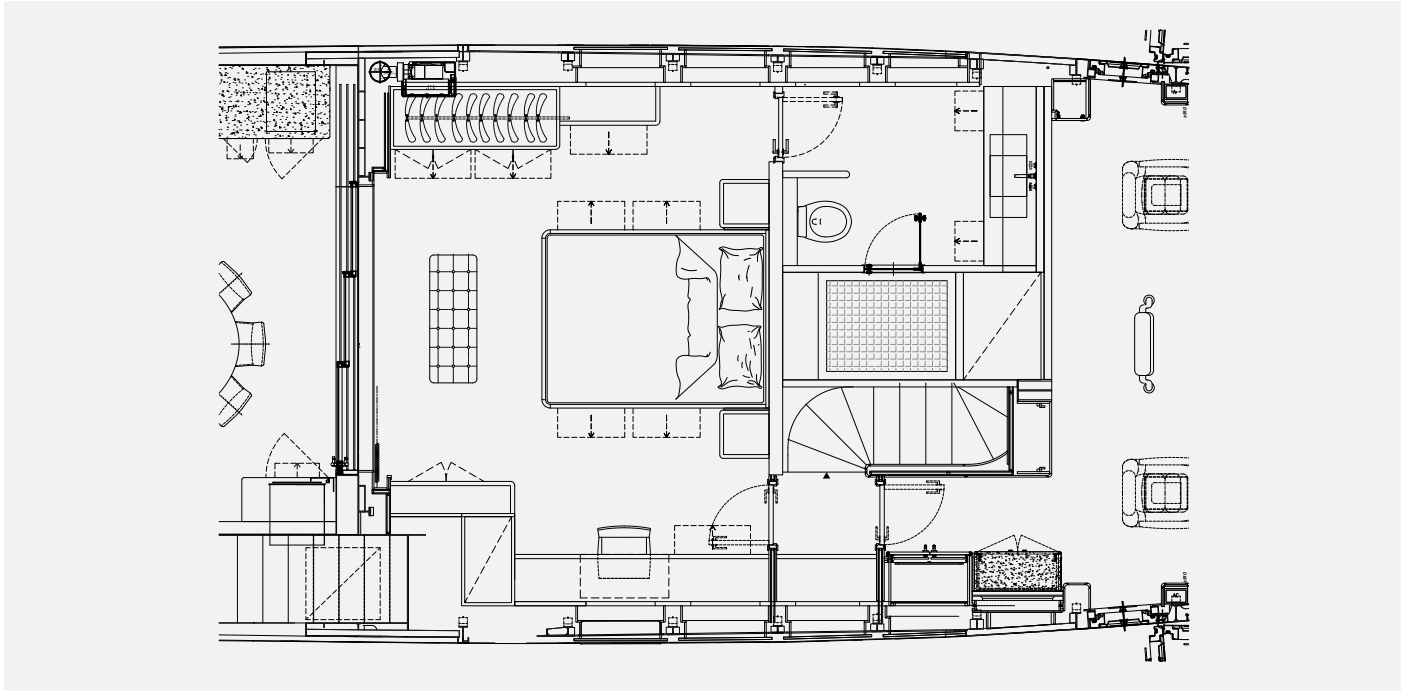
VIP Cabin PTS
12.4 m²
133.4 ft²

Engine Room
33.8 m²
363.8 ft²

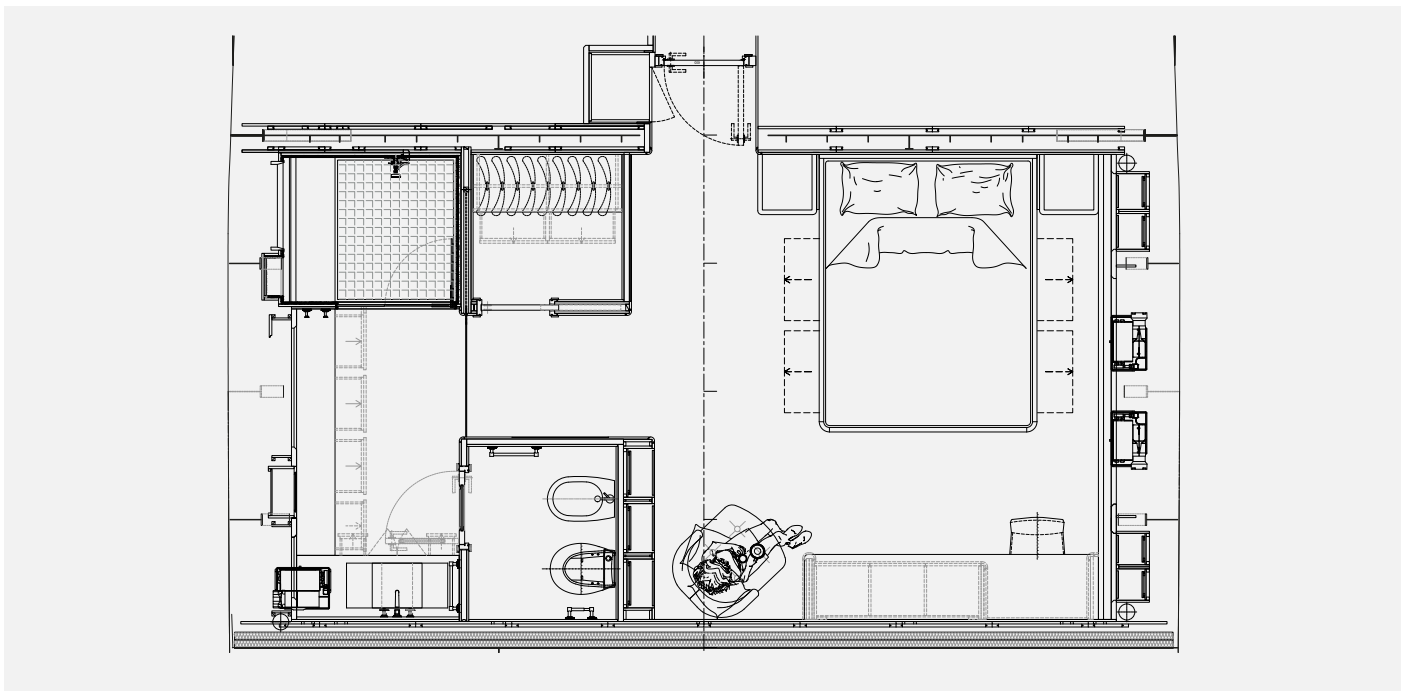
Lazarette
25.8 m²
277.7 ft²

Swimming
Platform
13.3 m²
143 ft²

ARRANGEMENT PLAN REFIT OPTIONS



Refit the Sky Lounge on upper deck to change it into an Owner cabin



Refit the two VIP cabins on lower deck to change them into a full beam Owner cabin or VIP cabin

PHOTO GALLERY EXTERIOR

BABBO











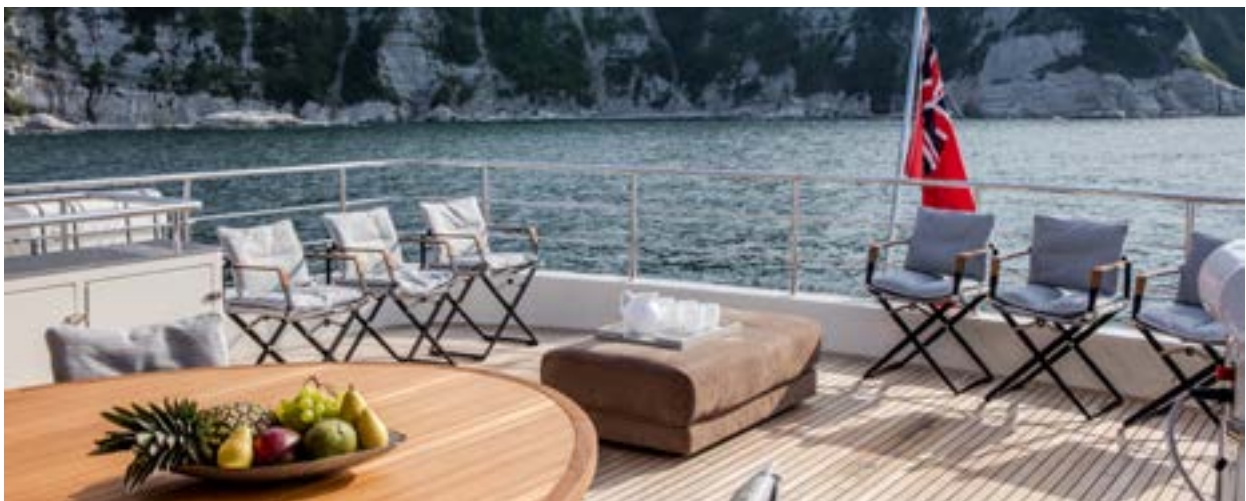
PHOTO GALLERY DECKS

BABBO



Main Deck Cockpit





Upper Deck Cockpit





Upper Deck Foredeck





Sundeck

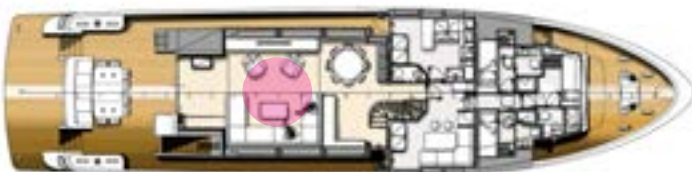


PHOTO GALLERY INTERIORS

BABBO

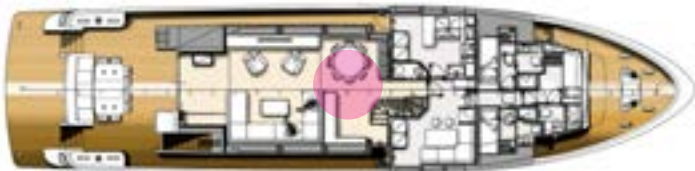


Main Salon





Main Salon



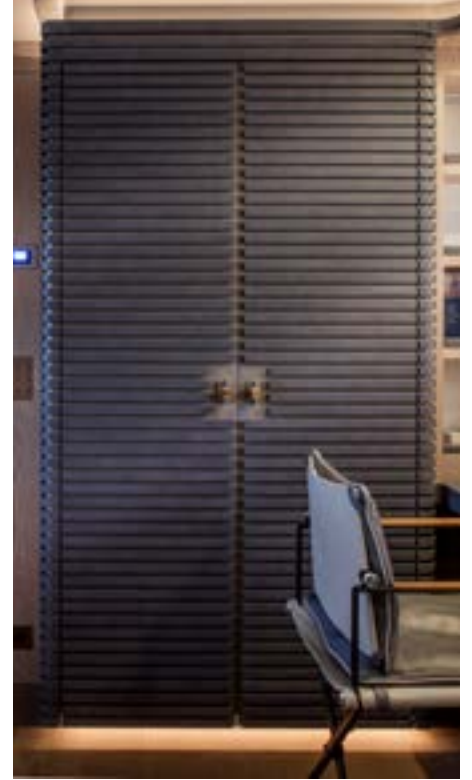


Owner Cabin





Owner Cabin





Owner Cabin Bathroom





Vip Cabin Port



Vip Cabin Port - Bathroom





Guest Cabin Starboard



Guest Cabin Starboard – Bathroom



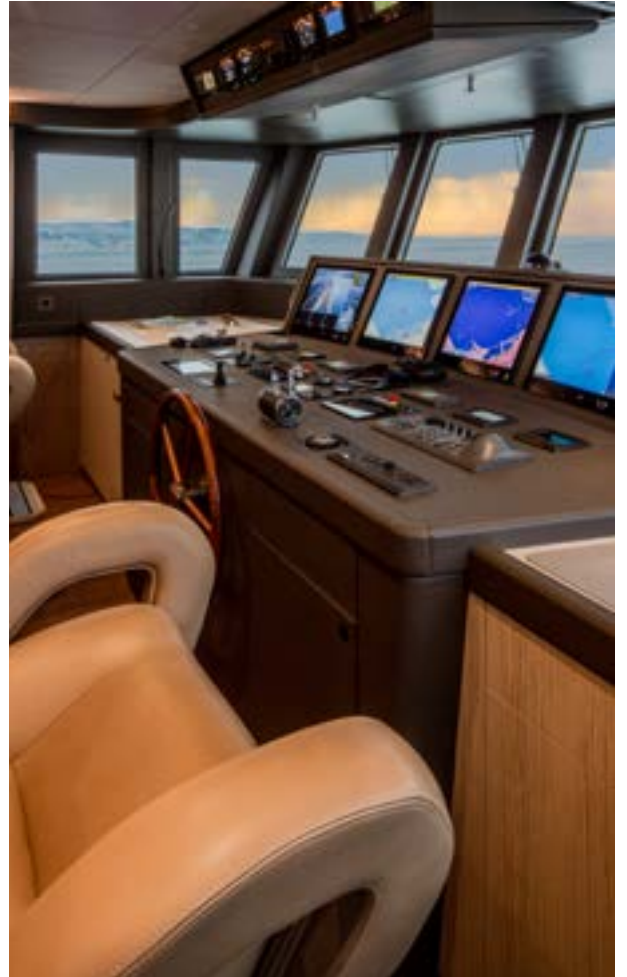


Sky Lounge



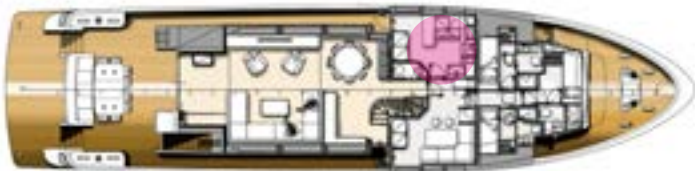


Wheelhouse





Galley





Dinette





Engine Room



Scan the QR code to walk through MY Babbo engine room





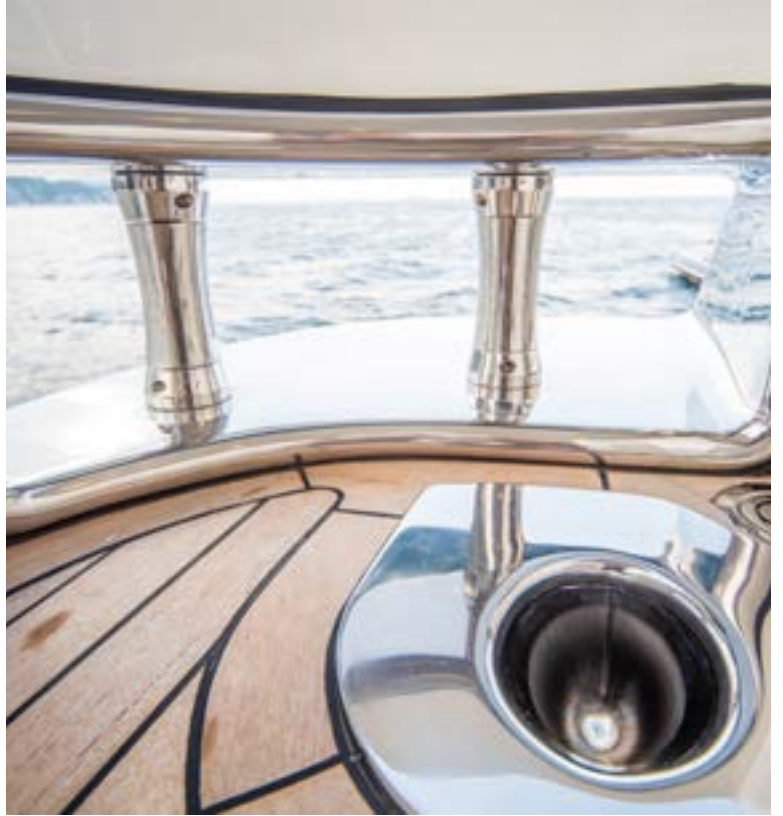
Lazarette - Diving Centre



Scan the QR code to walk through MY Babbo lazarette



BUILD DETAILS









CANTIERE
DELLE MARCHE
explorer yachting starts here