



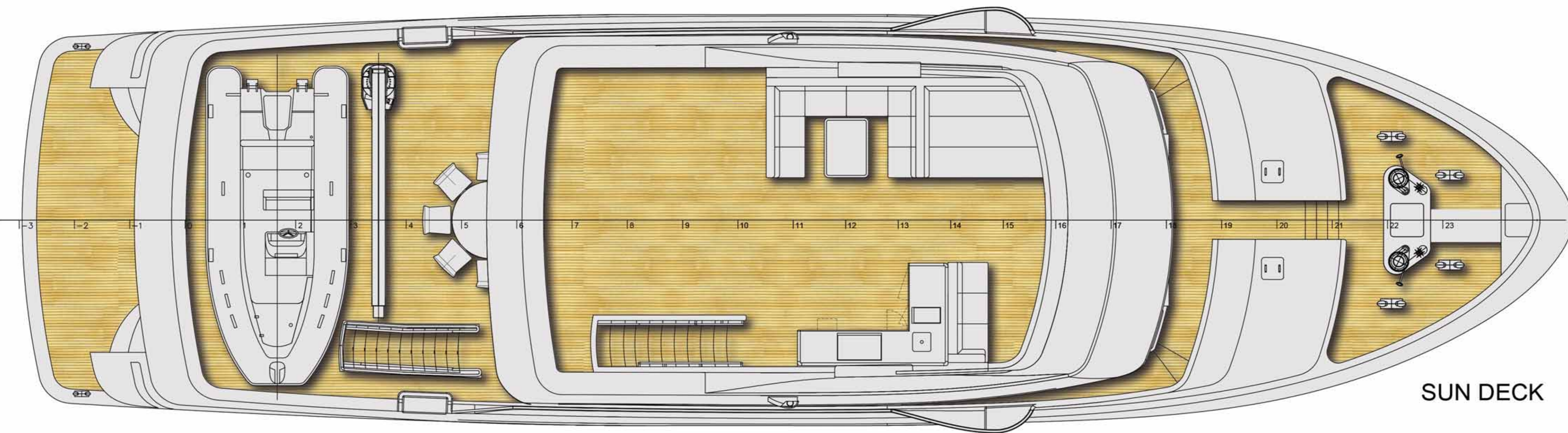
CANTIERE DELLE MARCHE

Darwin 92

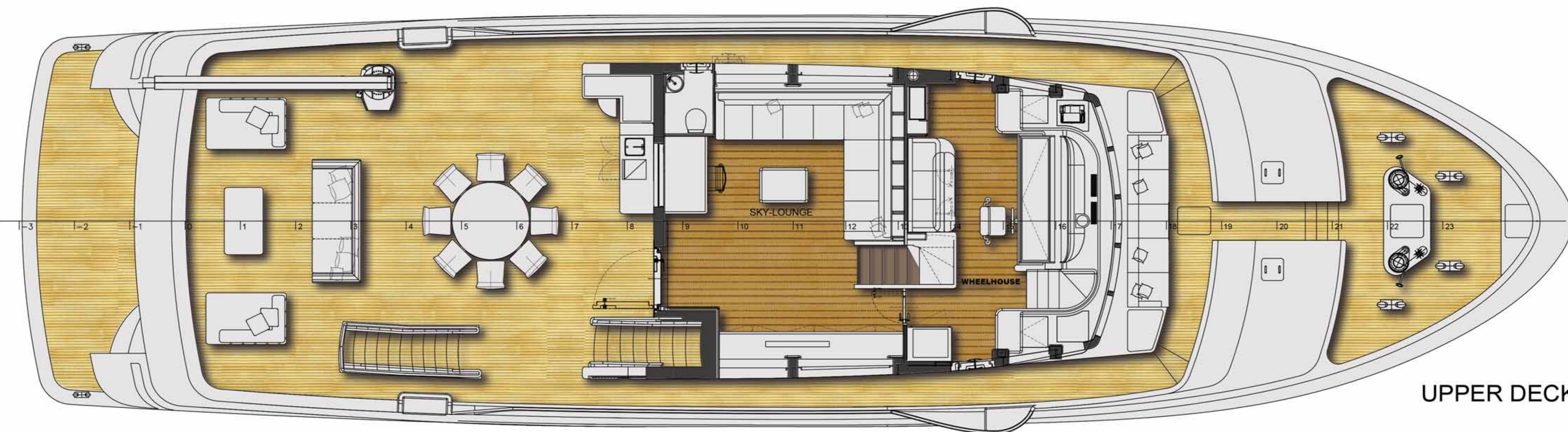
Darwin
CLASS



1-3 1-2 1-1 10 11 12 13 14 15 16 17 18 19 20 21 22 23



SUN DECK



UPPER DECK



MAIN DECK



LOWER DECK

General Arrangement Plan			
Shipyards		PROJECT Darwin Class 92	Portuguese Bridge
<p>CANTIERE DELLE MARCHE <small>Via S. Maria Maddalena, 10 - 47021 Marina di Classe (RN) - Italy Tel. +39 0541 200000 - Fax +39 0541 200001 www.cantieredellemarche.it</small></p>	<p>HYDRO TEC <small>Via S. Maria Maddalena, 10 - 47021 Marina di Classe (RN) - Italy Tel. +39 0541 200000 - Fax +39 0541 200001 www.hydrotec.it</small></p>	<p>Scale 1:50</p>	Sheet AD
<p>Approved by</p> <p>A. - preliminary B. - execution C. - As-Built</p>	<p>Approved by</p> <p>A. - preliminary B. - execution C. - As-Built</p>	<p>last date issue</p> <p>CANNES 2018</p>	<p>Project code</p> <p>Darwin Class 92</p>